

## Firmware Update Procedures

### PTC-145T

This document provides procedures for updating the PTC-145T HDBaseT Tracking PTZ Camera

### Updating the PTC-145T Camera Firmware (ARM V2.2.1/ SOC V3.2.0/ AF Version V1.0.9)

#### What items you should prepare before updating the firmware

- The latest PTC-145T firmware update zip file x1.  
The latest firmware zip file can be downloaded from the PTC-145T product page of the Datavideo official website <https://www.datavideo.com/product/PTC-145T>. After the downloaded firmware zip file is unzipped, you can see two firmware files.
  - **Camera & AF firmware files:** D-PTC145T\_SY20X\_V3.2.0\_R\_20250717.mrg
  - **MCU firmware:** PTC145T\_ARM\_V2.2.1\_20250707.mrg
- PTC-145T camera x 1
- 12V power adapter x 1
- Laptop or PC x 1
- Ethernet Cable x 1

This document describes how to perform firmware update on a **Windows** computer.

## System Connection Diagram



## [Checking the Firmware Version](#)

Page 3

## [Before Updating the Firmware](#)

Page 6

## [Updating the MCU Firmware](#)

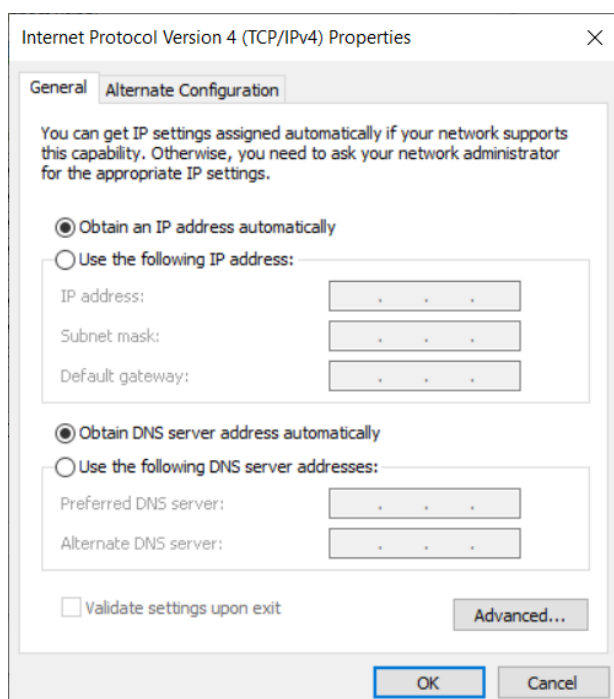
Page 9

## [Updating the Camera & AF firmware](#)

Page 11

## **Checking the Firmware Version**

1. Please connect an RJ-45 Ethernet cable from the RJ-45 Ethernet interface of your PC or laptop to one LAN interface of your router.
2. Please connect an RJ-45 Ethernet cable from the “LAN” interface which is located on the rear panel of your PTC-145T to another LAN interface of your router.
3. Please connect a DC 12V power adapter to your PTC-145T camera.
4. The factory default of the PTC-145T is DHCP mode. Please make sure that your laptop or PC is set in DHCP mode.

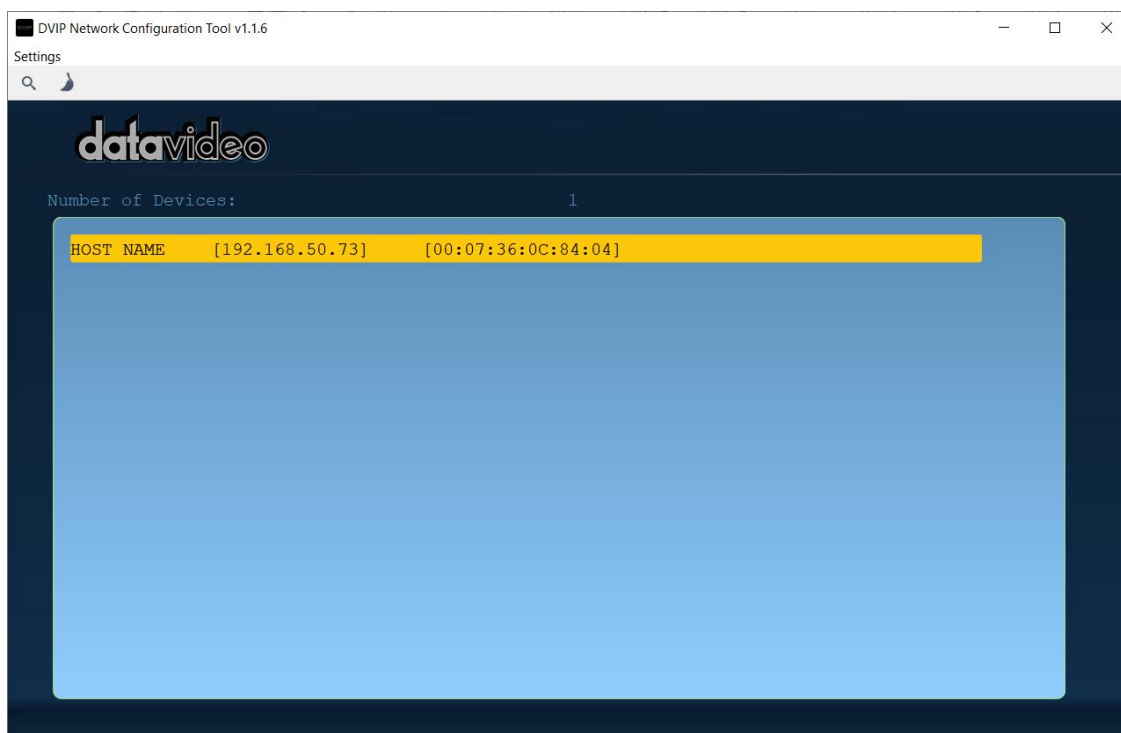


5. Please download “Datavideo Network Configuration Tool” from Datavideo official website’s PTC-145T product page <https://www.datavideo.com/product/PTC-145T>

6. Please double-click the DVIP Network Configuration Tool to select your Ethernet Card, and then please click “OK”.



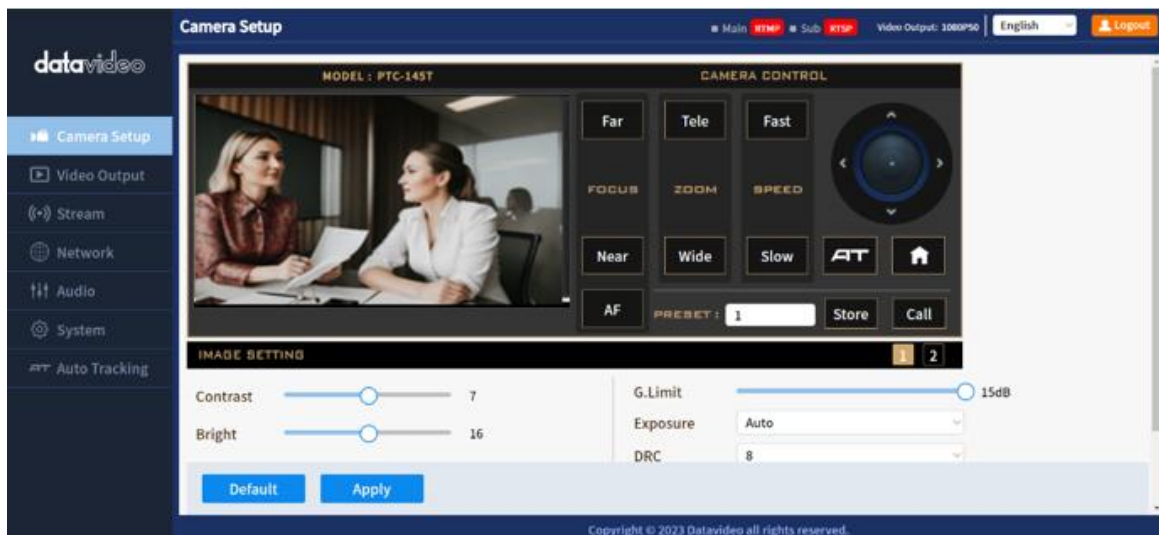
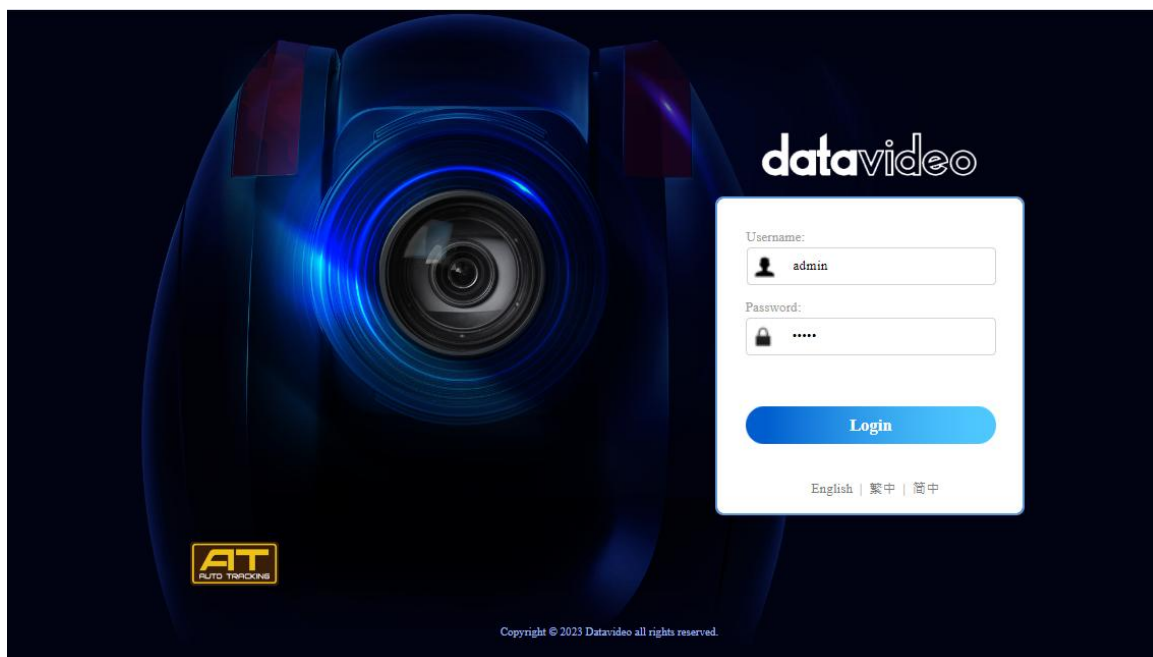
7 You can see the DHCP IP address of your PTC-145T. In this example, it is “192.168.50.73”.



8. After obtaining the IP address of your PTC-145T, please enter the IP address in the address bar of your web browser. After that, you will see the login page of the PTC-145T web UI. Please enter the default User Name and Password for logging into the web UI.

**Default User Name: admin**

**Default Password: admin**



9. Please press the “**System**” option to open the firmware update page. After that, you can see the current firmware version for your PTC-145T camera.

## **Before Updating the Firmware**

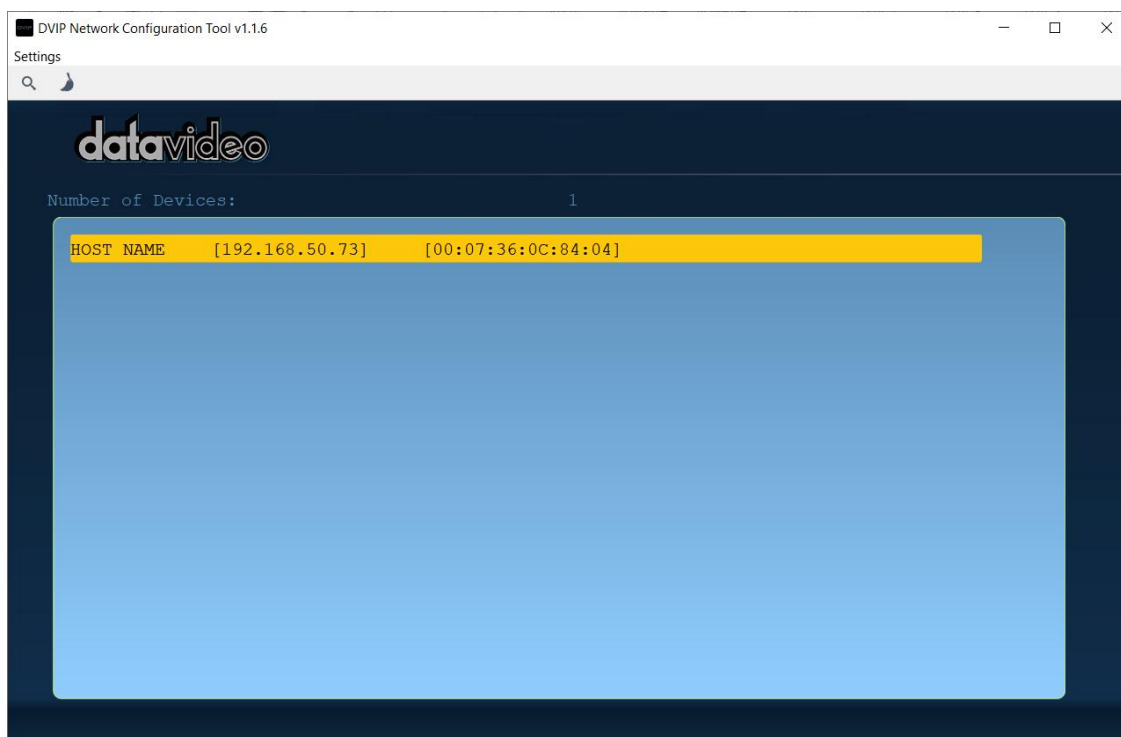
1. Please connect an RJ-45 Ethernet cable from the RJ-45 Ethernet interface of your PC or laptop to one LAN interface of your router.
2. Please connect an RJ-45 Ethernet cable from the “LAN” interface which is located on the rear panel of your PTC-145T to another LAN interface of your router.
3. Please connect a DC 12V power adapter to your PTC-145T camera.
4. The factory default of the PTC-145T is the DHCP mode. Please make sure your laptop or PC is set in the DHCP mode.

5. Please download “Datavideo Network Configuration Tool” from Datavideo official website’s PTC-145T product page <https://www.datavideo.com/product/PTC-145T>

6. Please double-click the DVIP Network Configuration Tool to select your Ethernet Card, and then please click “OK”.



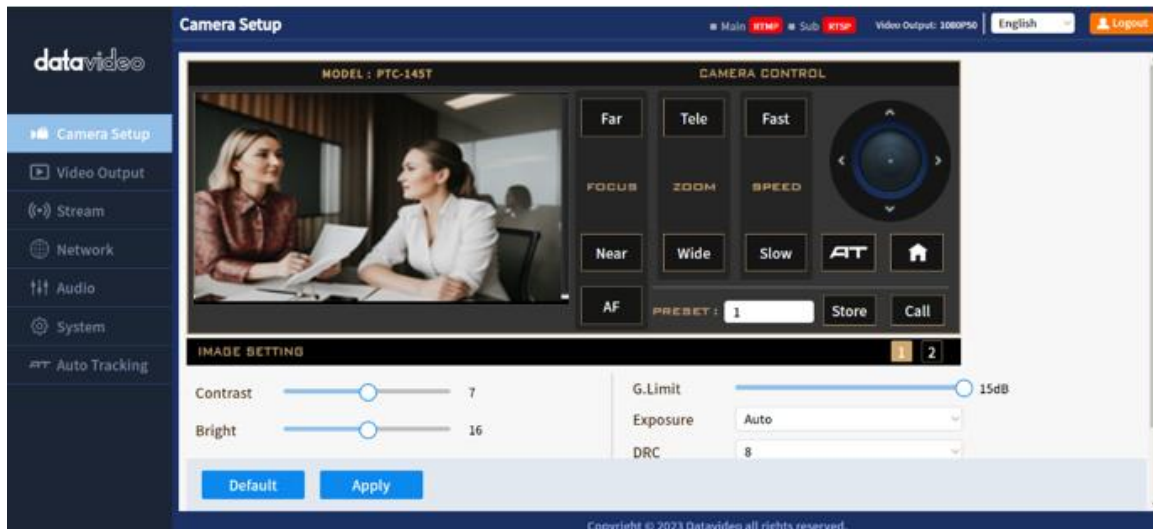
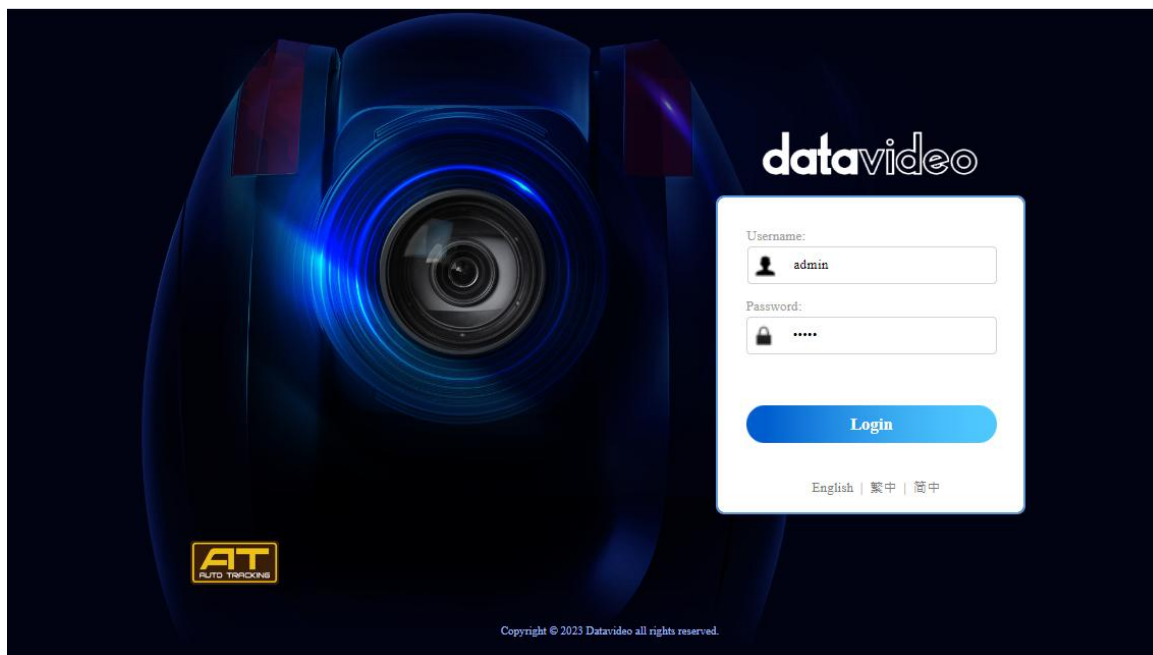
7. You can see the DHCP IP address of your PTC-145T. In this example, it is “192.168.50.73”.



8. After obtaining the IP address of your PTC-145T, please enter the IP address in the address bar of your web browser. After that, you will see the login page of the PTC-145T web UI. Please enter the default User Name and Password for logging into the web UI.

**Default User Name: admin**

**Default Password: admin**





## Updating the MCU Firmware

1. Please make sure the downloaded firmware is unzipped. After that, please press the **System-> Browse** to select the MCU firmware file “PTC145T\_ARM\_V2.2.1\_20250707.mrg”. In this section, we will use “PTC145T\_ARM\_V2.1.3\_20240429.mrg” as an example.

**System**

Device Name: PTC-145T

Language: English

Tally Mode: Red/Green

RS232/422: RS422

**Firmware**

Version: SOCv.3.0.5-ARMv2.1.3

File Path:  **Browse** **Update**

**Account and Password**

Admin Password:

**Factory Default** **Apply** **Reboot**

Copyright © 2023 Datavideo all rights reserved.

Name	Date modified	Type	Size
<b>PTC145T_ARM_V2.1.3_20240429.mrg</b>	4/29/2024 5:17 PM	MRG File	138

ne: PTC145T\_ARM\_V2.1.3\_20240429.mrg

All Files (\*.\*)

**Open** **Cancel**

**System**

Device Name: PTC-145T

Language: English

Tally Mode: Red/Green

RS232/422: RS422

**Firmware**

Version: SOCV.3.0.5-ARMv2.1.3

File Path: PTC145T\_ARM\_V2.1.3\_20240429.mrg Browse Update

**Account and Password**

Admin Password: . . . . .

Factory Default Apply Reboot

Copyright © 2023 Datavideo all rights reserved.

2. Please press the “Update” button, and then the firmware update procedure for the MCU will be started automatically.

**System**

Device Name: PTC-145T

Language: English

Tally Mode: Red/Green

RS232/422: RS422

**Firmware**

Version: SOCV.3.0.5-ARMv2.1.3

File Path: PTC145T\_ARM\_V2.1.3\_20240429.mrg Browse

**Account and Password**

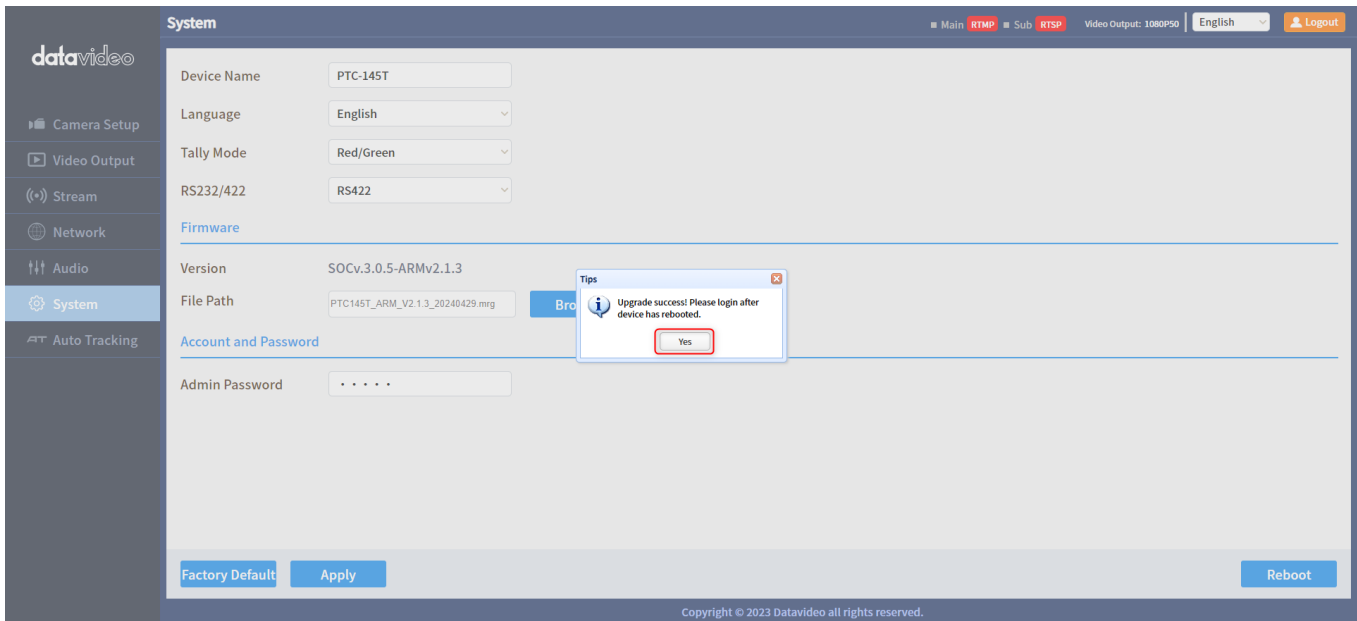
Admin Password: . . . . .

Factory Default Apply Reboot

Copyright © 2023 Datavideo all rights reserved.

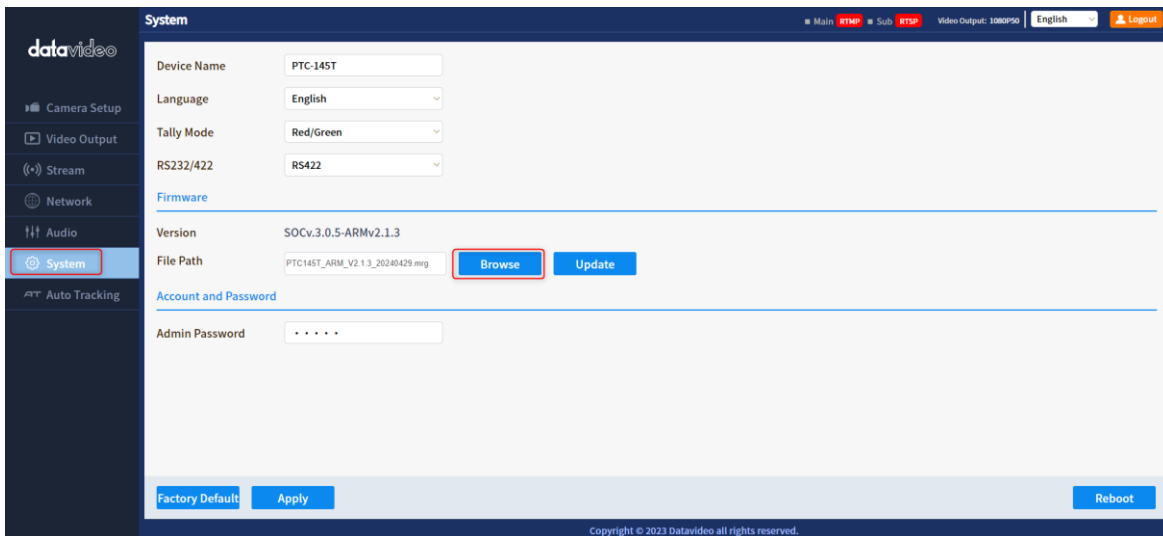
**Tips**  
Is upgrading, please wait... After the success of the upgrade, please login again!

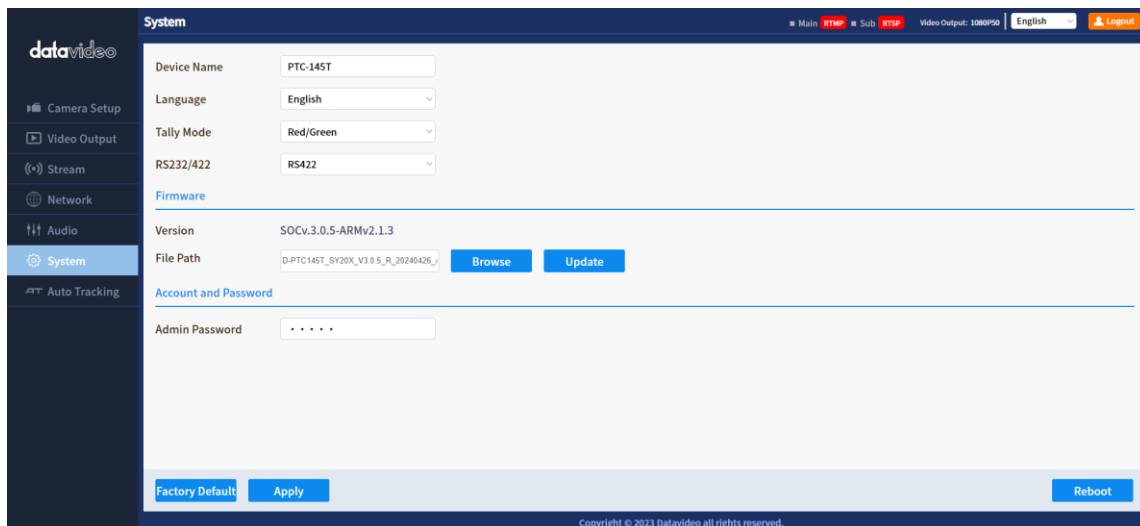
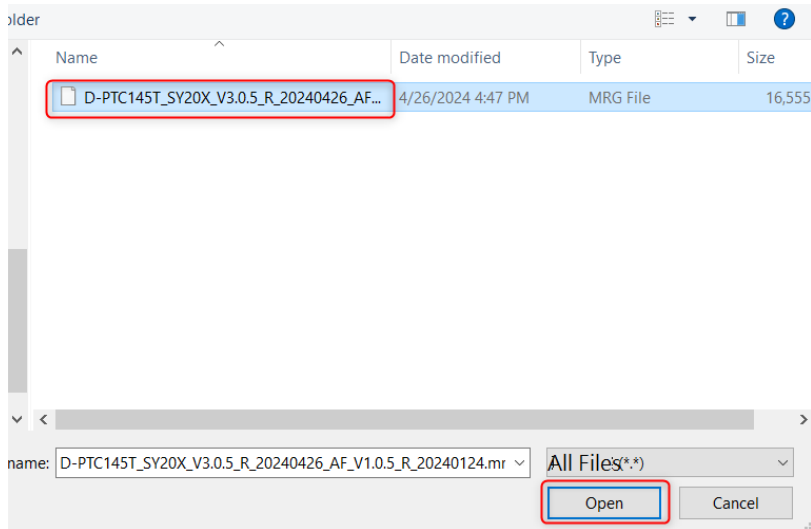
3. After the MCU firmware update is done successfully, the PTC-145T will reboot automatically. After the rebooting is done, please press the “Yes” button and then login to the PTC-145T Web UI again. After that, the whole MCU firmware update procedure is done successfully.



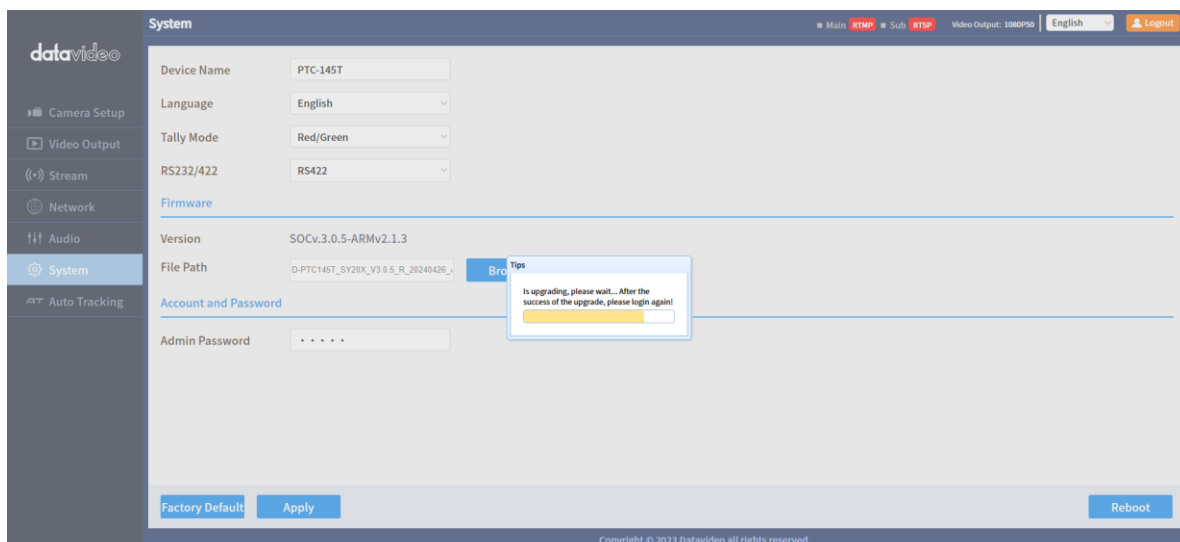
## Updating the Camera & AF Firmware

1. Please make sure the downloaded firmware is unzipped. After that, please press the **System-> Browse** to select the Camera & AF firmware file “D-PTC145T\_SY20X\_V3.2.0\_R\_20250717.mrg”. In this section, we will use “D-PTC145T\_SY20X\_V3.0.5\_R\_20240426\_AF\_V1.0.5\_R\_20240124.mrg” as an example.





2. Please press the “Update” button, and then the firmware update procedure for the Camera & AF will be started automatically.



3. After the Camera & AF firmware update is done successfully, the PTC-145T will reboot automatically. After the rebooting is done, please press the “Yes” button and then login to the PTC-145T Web UI again. After that, the whole Camera & AF firmware update procedure is done successfully.

