

Firmware Update Procedures

PTC-145

This document provides procedures for updating the PTC-145 HD Tracking PTZ Camera

Updating the PTC-145 Camera Firmware (ARM V2.2.4/ SOC V2.3.6/ AF Version V1.0.8)

What items you should prepare before updating the firmware

- The latest PTC-145 firmware update zip file x1.
The latest firmware zip file can be downloaded from the PTC-145 product page of the Datavideo official website <https://www.datavideo.com/product/PTC-145>. After the downloaded firmware zip file is unzipped, you can see two firmware files.
 - **Camera & AF firmware files:** D-PTC145_NDI_SY20X_V2.3.6_R_20250717.mrg
 - **MCU firmware:** PTC145_ARM_V2.2.4_20250703.mrg
- PTC-145 camera x 1
- 12V power adapter x 1
- Laptop or PC x 1
- Ethernet Cable x 1

This document describes how to perform firmware update on a **Windows** computer.

System Connection Diagram



[Checking the Firmware Version](#)

Page 2

[Before Updating the Firmware](#)

Page 6

[Updating the MCU Firmware](#)

Page 9

[Updating the Camera & AF firmware](#)

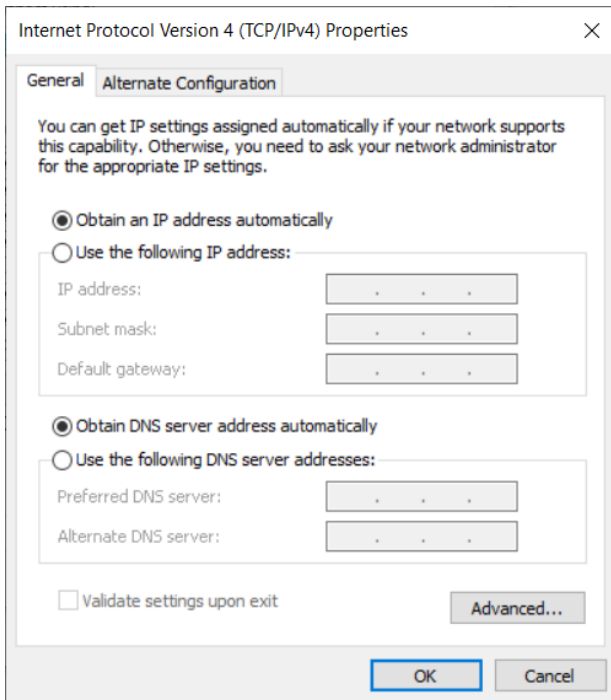
Page 11

Checking the Firmware Version

1. Please connect an RJ-45 Ethernet cable from the RJ-45 Ethernet interface of your PC or laptop to one LAN interface of your router.
2. Please connect an RJ-45 Ethernet cable from the “LAN” interface which is located on the rear panel of your PTC-145 to another LAN interface of your router.

3. Please connect a DC 12V power adapter to your PTC-145 camera.

4. The factory default of the PTC-145 is DHCP mode. Please make sure that your laptop or PC is set in DHCP mode.

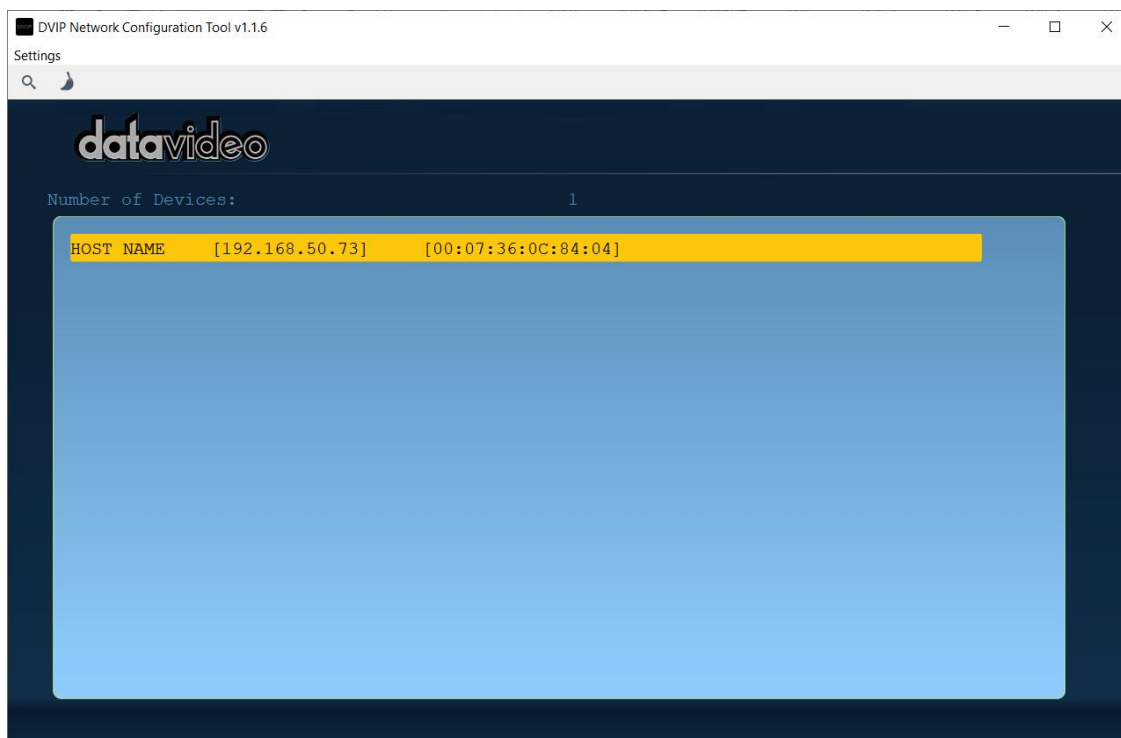


5. Please download “Datavideo Network Configuration Tool” from Datavideo official website’s PTC-145 product page <https://www.datavideo.com/product/PTC-145>

6. Please double-click the DVIP Network Configuration Tool to select your Ethernet Card, and then please click “OK”.



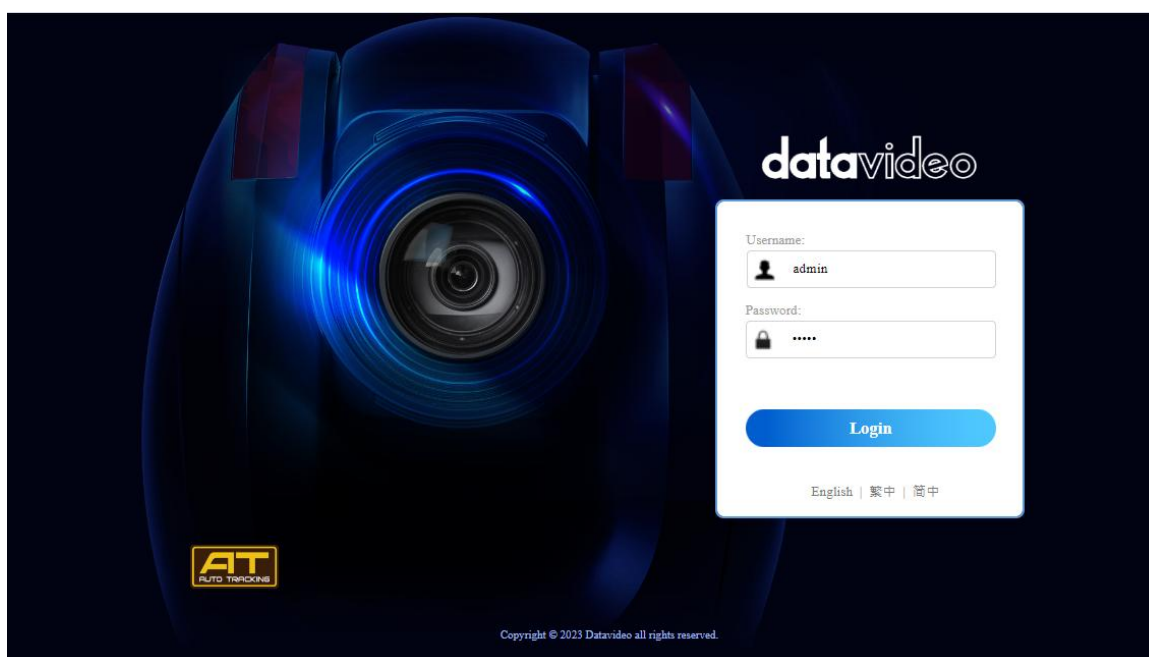
7 You can see the DHCP IP address of your PTC-145. In this example, it is “192.168.50.73”.

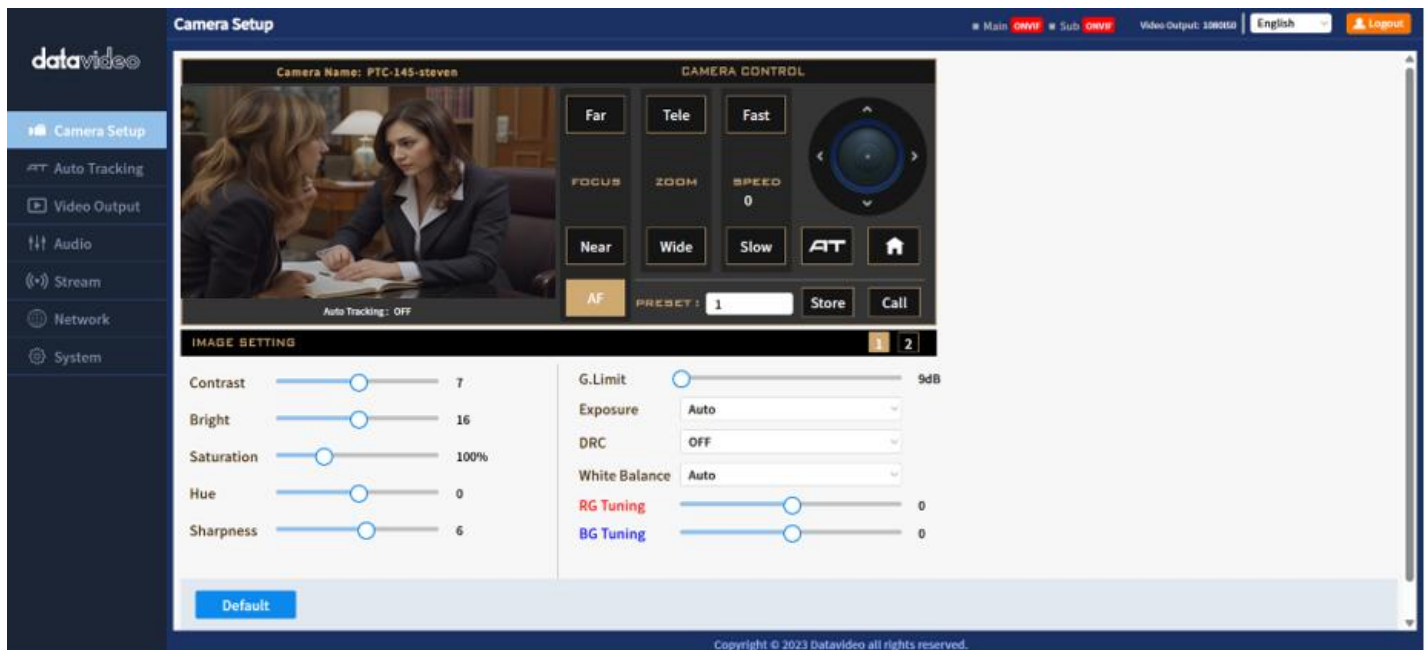


8. After obtaining the IP address of your PTC-145, please enter the IP address in the address bar of your web browser. After that, you will see the login page of the PTC-145 web UI. Please enter the default User Name and Password for logging into the web UI.

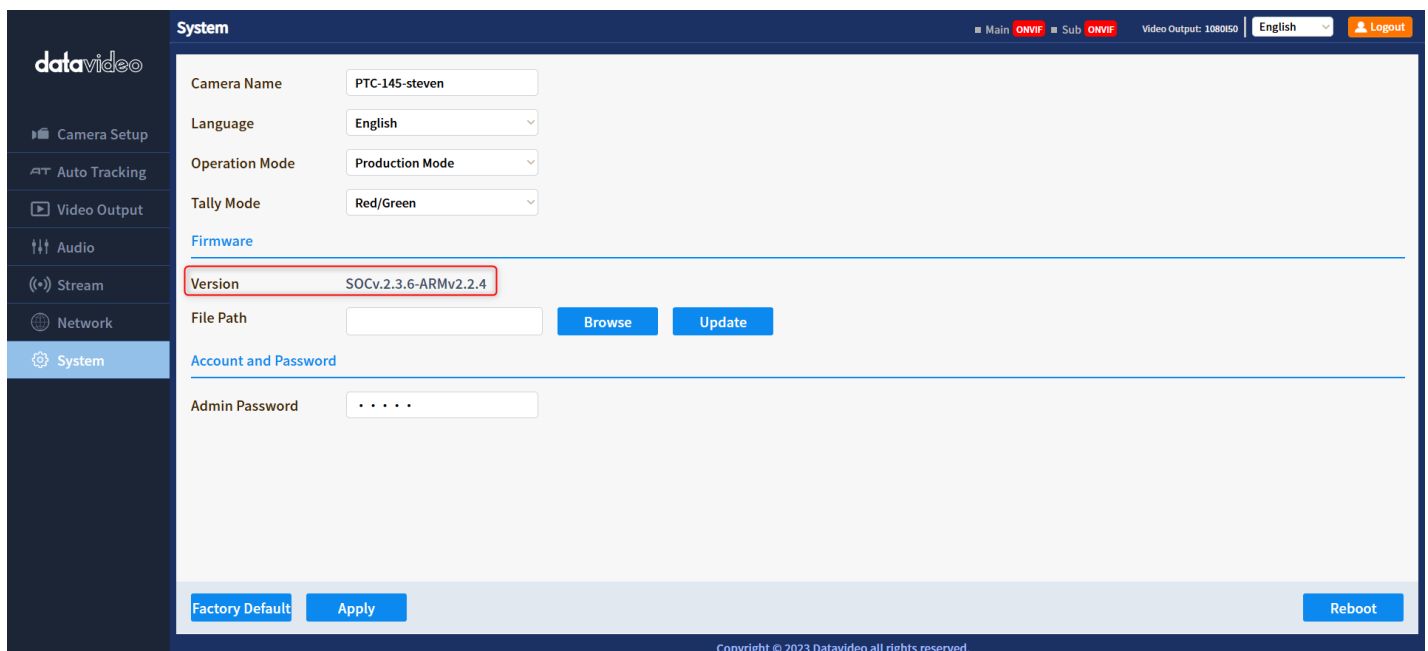
Default User Name: admin

Default Password: admin



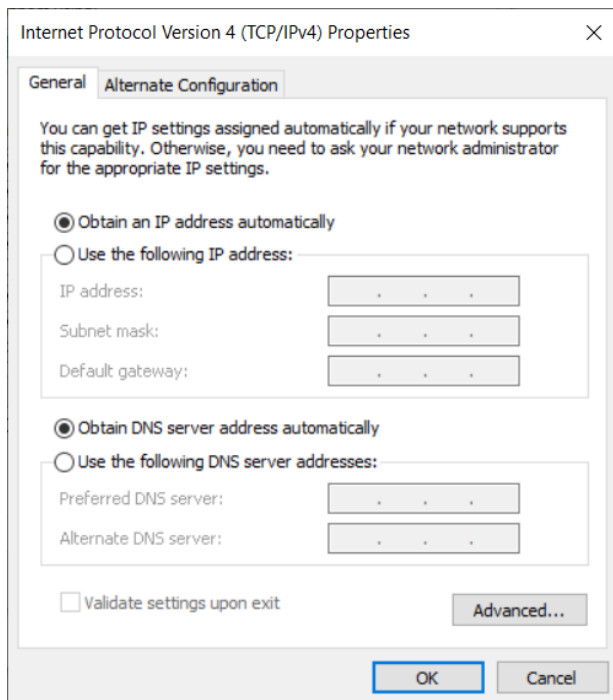


9. Please press the “**System**” option to open the firmware update page. After that, you can see the current firmware version for your PTC-145 camera.



Before Updating the Firmware

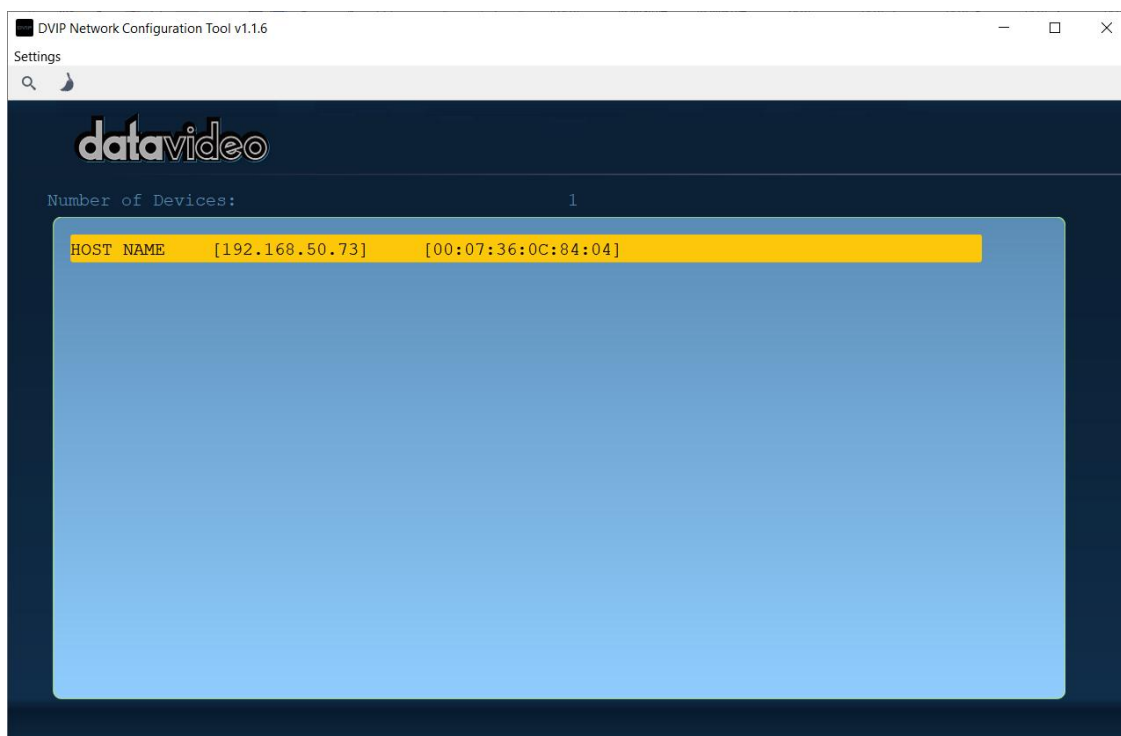
1. Please connect an RJ-45 Ethernet cable from the RJ-45 Ethernet interface of your PC or laptop to one LAN interface of your router.
2. Please connect an RJ-45 Ethernet cable from the “LAN” interface which is located on the rear panel of your PTC-145 to another LAN interface of your router.
3. Please connect a DC 12V power adapter to your PTC-145 camera.
4. The factory default of the PTC-145 is the DHCP mode. Please make sure your laptop or PC is set in the DHCP mode.



5. Please download “Datavideo Network Configuration Tool” from Datavideo official website’s PTC-145 product page <https://www.datavideo.com/product/PTC-145>
6. Please double-click the DVIP Network Configuration Tool to select your Ethernet Card, and then please click “OK”.



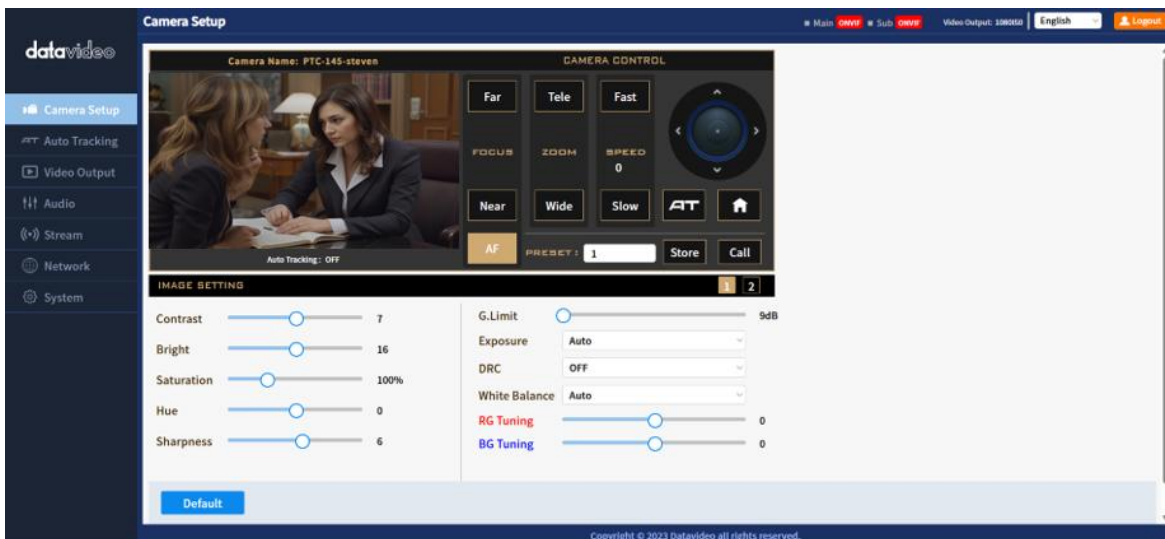
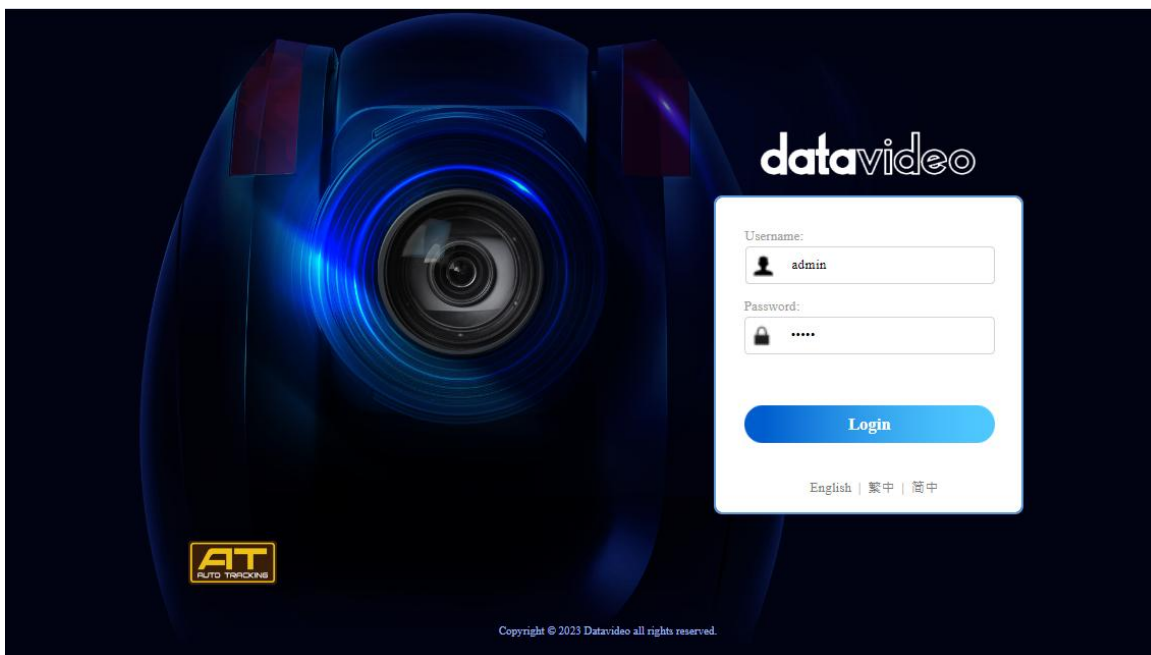
7 You can see the DHCP IP address of your PTC-145. In this example, it is “192.168.50.73”.



8. After obtaining the IP address of your PTC-145, please enter the IP address in the address bar of your web browser. After that, you will see the login page of the PTC-145 web UI. Please enter the default User Name and Password for logging into the web UI.

Default User Name: admin

Default Password: admin



Updating the MCU Firmware

1. Please make sure the downloaded firmware is unzipped. After that, please press the **System-> Browse** to select the MCU firmware file “PTC145_ARM_V2.2.4_20250703.mrg”.

System

Camera Name: PTC-145-steven

Language: English

Operation Mode: Production Mode

Tally Mode: Red/Green

Firmware

Version: SOCv2.3.6-ARMv2.2.4

File Path: **Browse** **Update**

Account and Password

Admin Password:

Factory Default **Apply** **Reboot**

Copyright © 2023 Datavideo all rights reserved.

Name	Date modified	Type	Size
D-PTC145_NDI_SY20X_V2.3.6_R...	2025/7/17 下午 0...	MRG File	35,216 KB
PTC-145 Release Note.docx	2025/8/4 上午 10:...	Microsoft Wor...	19 KB
PTC145_ARM_V2.2.4_20250703.m...	2025/7/3 下午 04:...	MRG File	141 KB

ame: **Open** **Cancel**

System

Device Name: PTC-145NDI

Language: English

Tally Mode: Red/Green

Firmware

Version: SOCv2.2.1-ARMv2.1.6

File Path: PTC145_ARM_V2.1.6_20240429.mrg **Browse** **Update**

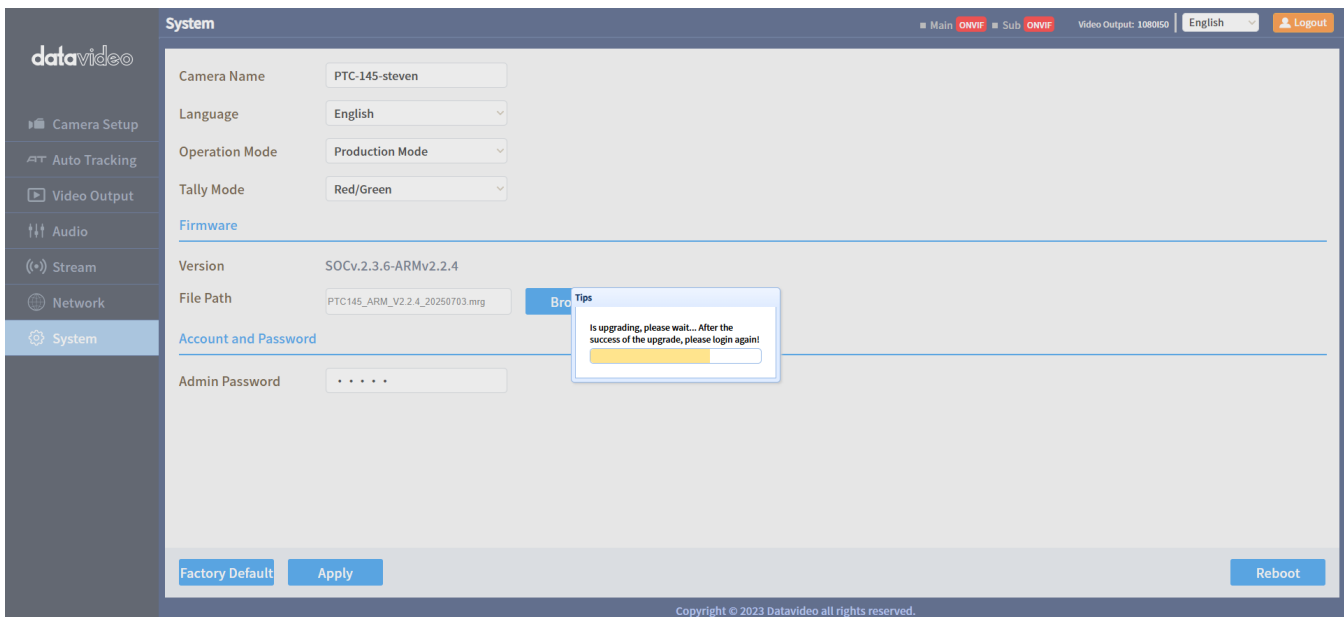
Account and Password

Admin Password:

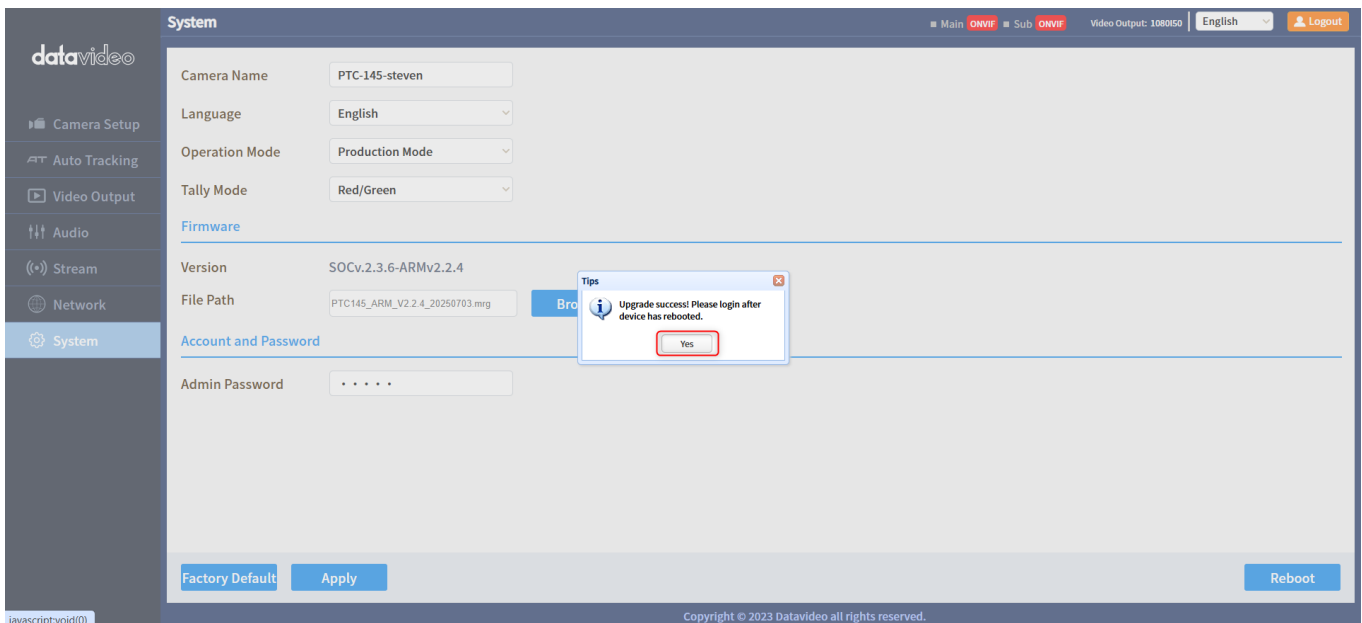
Factory Default **Apply** **Reboot**

Copyright © 2023 Datavideo all rights reserved.

2. Please press the “Update” button, and then the firmware update procedure for the MCU will be started automatically.



3. After the MCU firmware update is done successfully, the PTC-145 will reboot automatically. After the rebooting is done, please press the “Yes” button and then login to the PTC-145 Web UI again. After that, the whole MCU firmware update procedure is done successfully.



Updating the Camera & AF Firmware

1. Please make sure the downloaded firmware is unzipped. After that, please press the **System-> Browse** to select the Camera & AF firmware file “D-PTC145_NDI_SY20X_V2.3.6_R_20250717.mrg”.

System

Camera Name: PTC-145-steven

Language: English

Operation Mode: Production Mode

Tally Mode: Red/Green

Firmware

Version: SOCv.2.3.6-ARMv2.2.4

File Path: **Browse** **Update**

Account and Password

Admin Password:

Factory Default **Apply** **Reboot**

Copyright © 2023 Datavideo all rights reserved.

Name	Date modified	Type	Size
D-PTC145_NDI_SY20X_V2.3.6_R_20250717	2025/7/17 下午 0...	MRG File	35,216 KB
PTC-145 Release Note.docx	2025/8/4 上午 10:...	Microsoft Wor...	19 KB
PTC145_ARM_V2.2.4_20250703.m...	2025/7/3 下午 04:...	MRG File	141 KB

Name: D-PTC145_NDI_SY20X_V2.3.6_R_20250717.mrg

All Files (*.*)

Open **Cancel**

System

Camera Name: PTC-145-steven

Language: English

Operation Mode: Production Mode

Tally Mode: Red/Green

Firmware

Version: SOCv.2.3.6-ARMv2.2.4

File Path: D-PTC145_NDI_SY20X_V2.3.6_R_20250717.mrg **Browse** **Update**

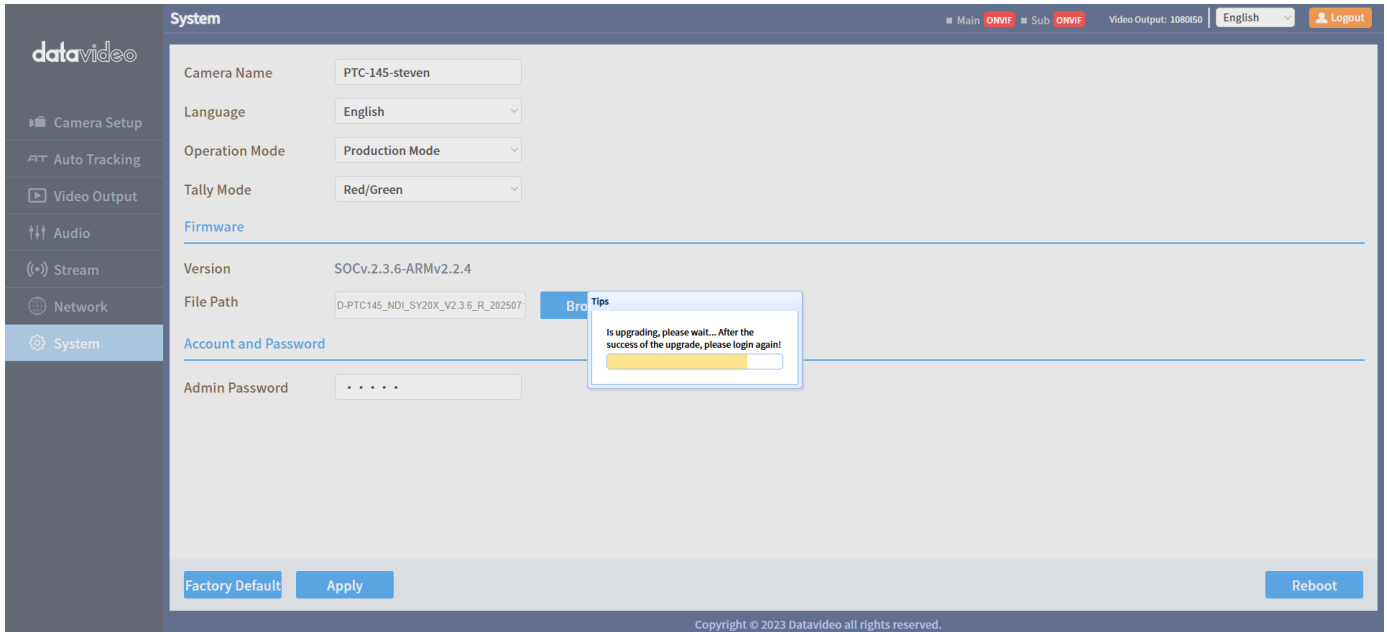
Account and Password

Admin Password:

Factory Default **Apply** **Reboot**

Copyright © 2023 Datavideo all rights reserved.

2. Please press the “Update” button, and then the firmware update procedure for the Camera & AF will be started automatically.



3. After the Camera & AF firmware update is done successfully, the PTC-145 will reboot automatically. After the rebooting is done, please press the “Yes” button and then login to the PTC-145 Web UI again. After that, the whole Camera & AF firmware update procedure is done successfully.

