

Software Update Procedures

RMC-2P

This document provides procedures for updating the RMC-2P Camera Controller.

Updating the RMC-2P Camera Controller Software v1.0.5.0

What items you should prepare before updating the software

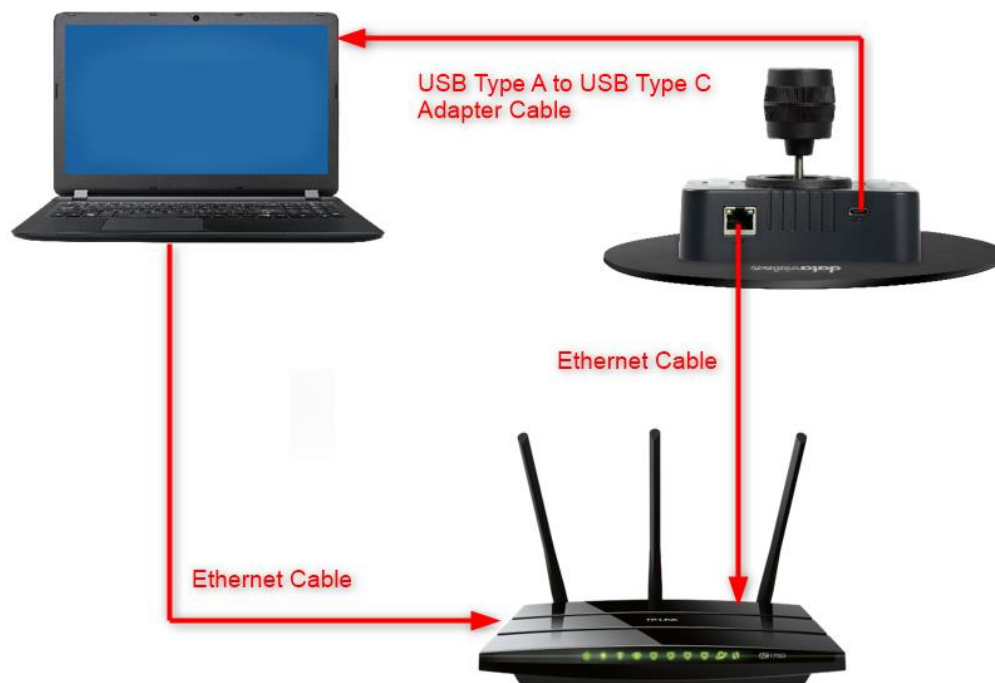
- The latest RMC-2P software update zip file x1.
The latest software zip file can be downloaded from the RMC-2P product page of the Datavideo official website <https://www.datavideo.com/product/RMC-2P>. After the downloaded software zip file is unzipped, you can see that there are five files include DVIP firmware, DVIP firmware upgrade tool, firmware upgrade configuration file, mingwm10.dll, and wxmsw28u_gcc_custom.dll
 - **DVIP Firmware : rmc-2_V1050**
 - **DVIP Firmware Upgrade Tool: DVIP_UpgradeTool**
 - **Firmware Upgrade Configuration File: DVIP_Config.cfg**
 - **mingwm10.dll & wxmsw28u_gcc_custom.dll**

Note: All of the above-mentioned five files must be placed in the same file folder.

- RMC-2P x1
- Laptop or PC x 1
- USB Type A to USB Type C adapter cable x 1
- Ethernet Cable x 2
- Router x1

This document describes how to perform Software update on a **Windows** computer.

System Connection Diagram

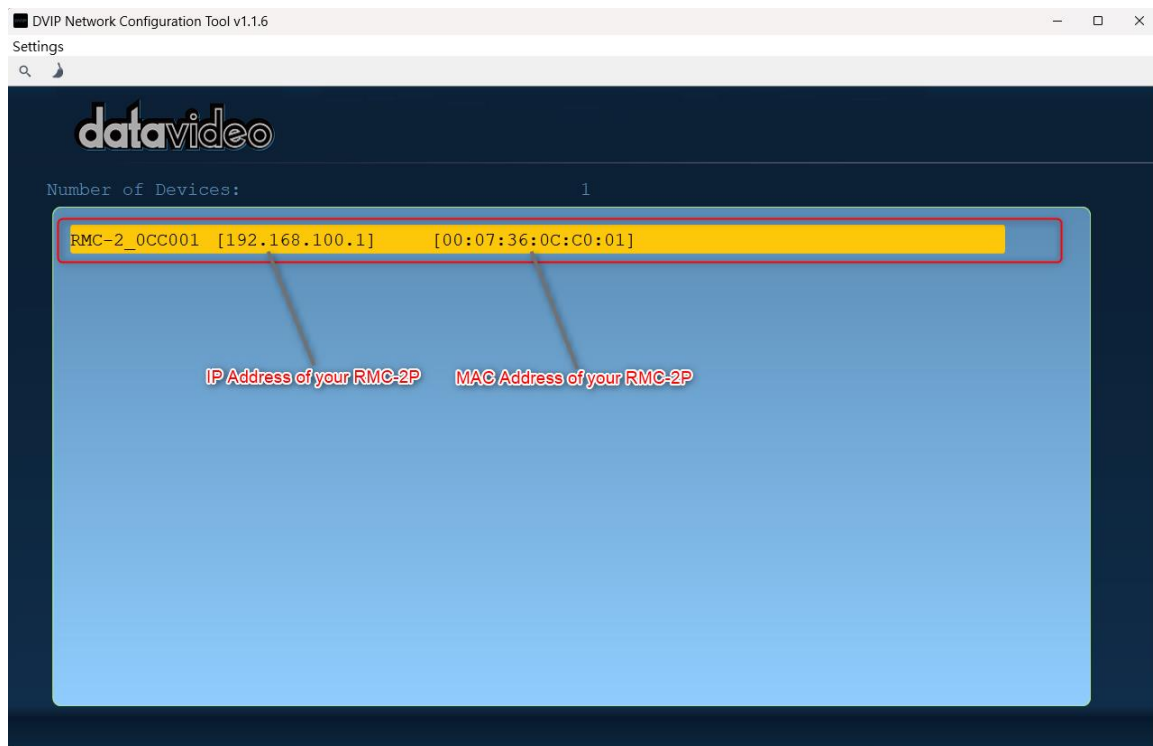


Checking the Firmware Version	Page 3
Updating the Firmware	Page 7
Checking the Updated Firmware Version	Page 12

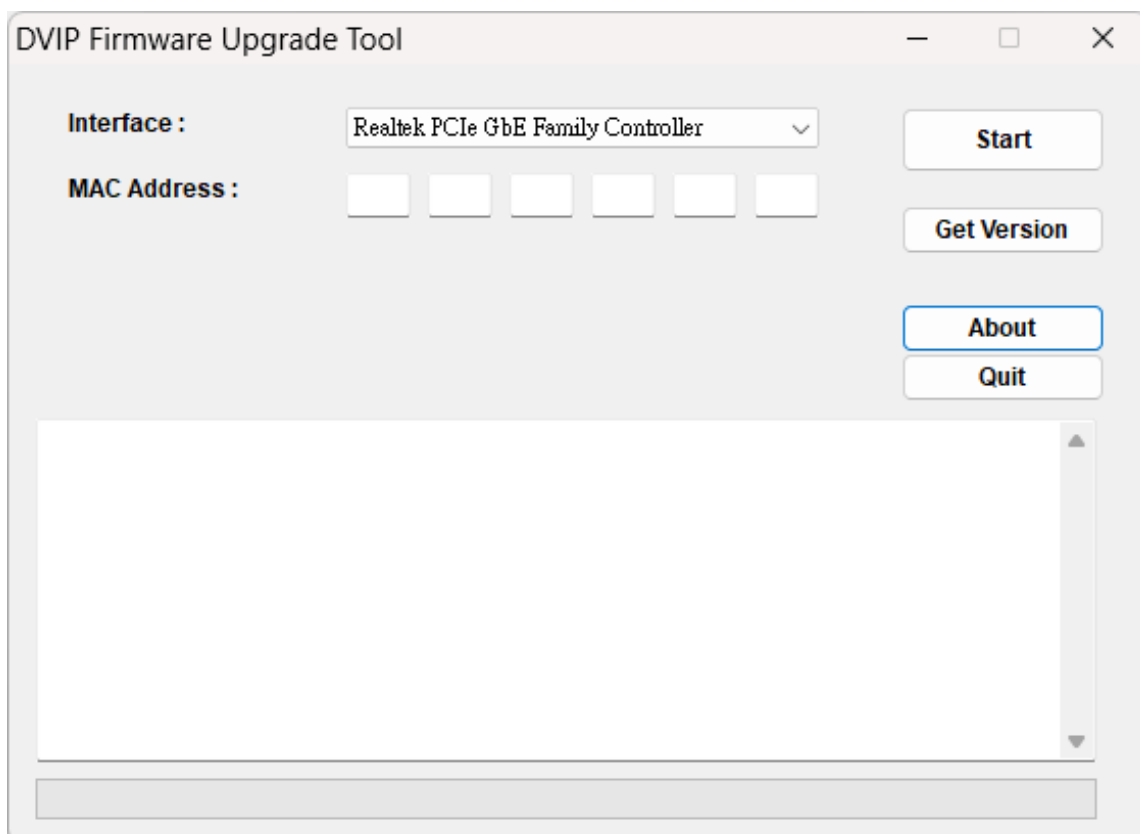
Checking the Firmware Version

1. Please connect an RJ-45 Ethernet cable from the DVIP port which is located on the rear panel of the RMC-2P to an Ethernet port of your router.
2. Please connect an RJ-45 Ethernet cable from the Ethernet port of your laptop to an Ethernet port of your router.
3. Please press and hold the “PST1” and “PST4” buttons of your RMC-2P simultaneously before connecting to a USB Type A to USB Type C adapter cable.
4. Please connect a USB Type A to USB Type C adapter cable from the USB Type A interface of your laptop to the USB Type C interface of your RMC-2P. Once the USB Type C cable is connecting to your RMC-2P, you can release your fingers from the “PST1” and “PST4” buttons. At this time, the PST1 to PST 4 buttons will be blinking sequentially, which means your RMC-2P is currently in firmware update mode.
5. Please check the IP address and MAC address of your RMC-2P by using the latest DVIP Configuration Tool which can be downloaded from the official product page of the “Datavideo DVIP Control Protocol from Datavideo official website <https://www.datavideo.com/product/DVIP>

6. You can get the IP and MAC addresses of your RMC-2P by using the DVIP Configuration Tool.



7. After the Ethernet Interface is ready, please run the “DVIP Firmware Upgrade Tool”.



8. Please select your Ethernet Card from the “Interface” drop-down menu.

DVIP Firmware Upgrade Tool

Interface : Realtek PCIe GbE Family Controller

MAC Address : [][][][][][]

Start

Get Version

About

Quit

9. Please enter the MAC Address into the “MAC Address” columns which are shown in the following diagram. In this example, the RMC-2P MAC Address is 00/07/36/0C/C0/01

DVIP Firmware Upgrade Tool

Interface : Realtek PCIe GbE Family Controller

MAC Address : 00 07 36 0C C0 01

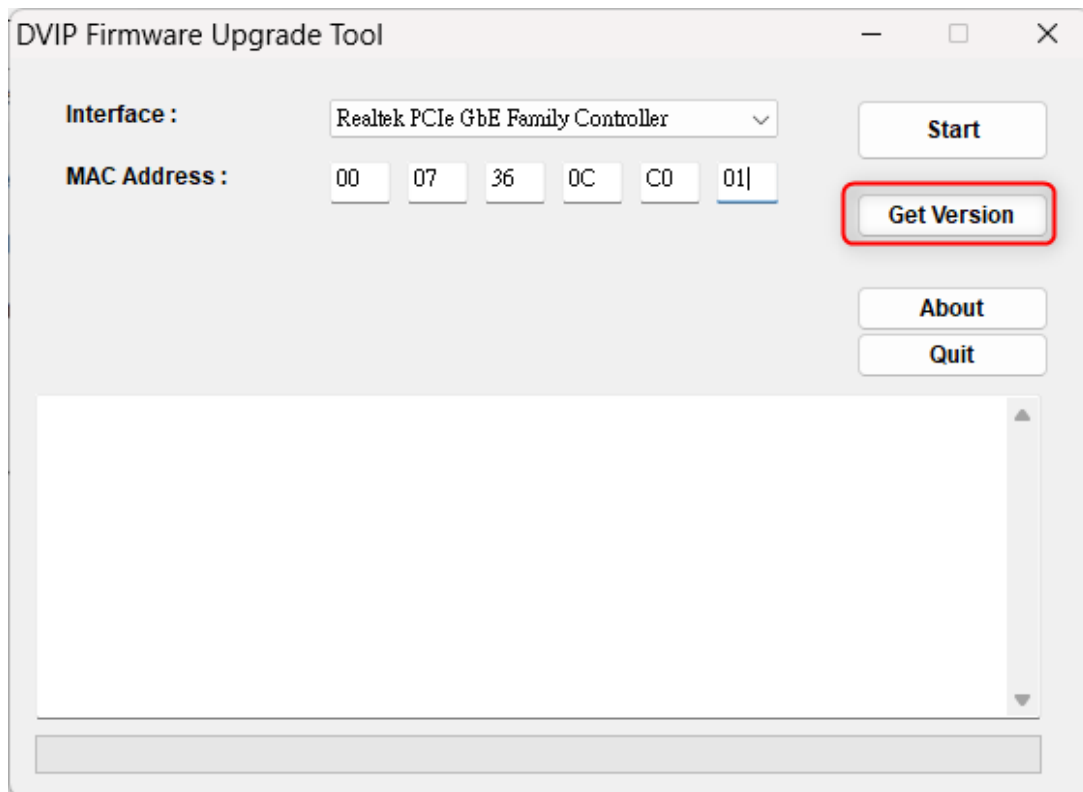
Start

Get Version

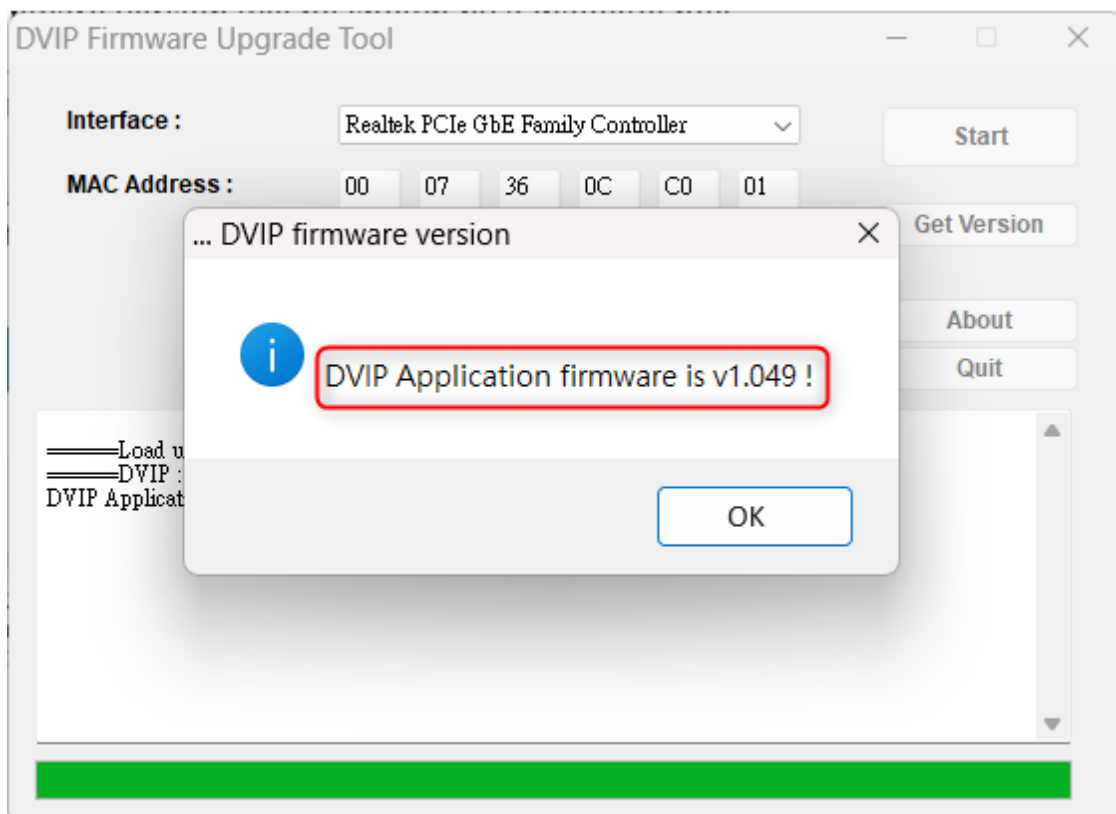
About

Quit

10. After the “MAC Address” is entered, please press the “Get Version” button.

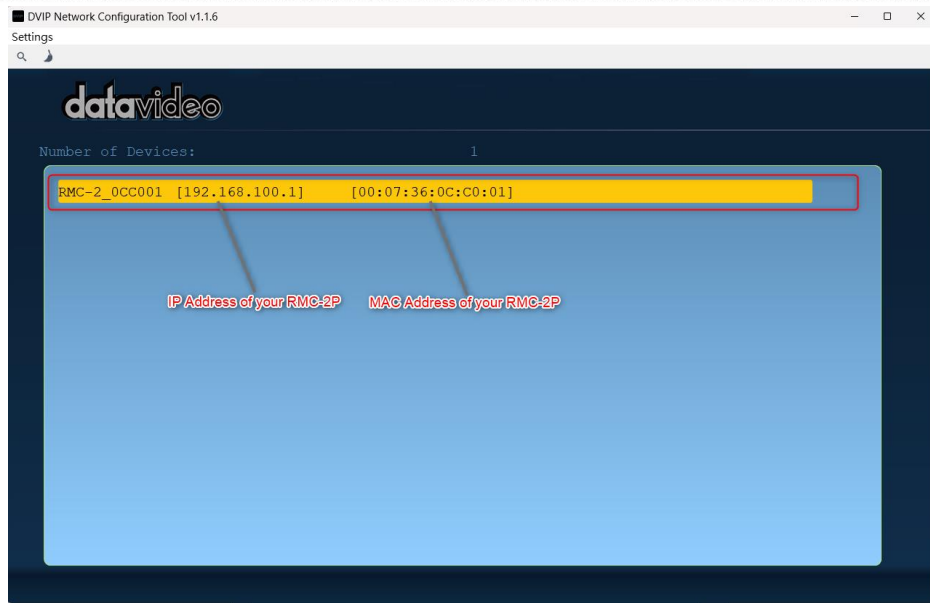


11. The current DVIP firmware version will be shown by a dialogue box.



Updating the Firmware

1. Please connect an RJ-45 Ethernet cable from the DVIP port which is located on the rear panel of the RMC-2P to an Ethernet port of your router.
2. Please connect an RJ-45 Ethernet cable from the Ethernet port of your laptop to an Ethernet port of your router.
3. Please press and hold the “PST1” and “PST4” buttons of your RMC-2P simultaneously before connecting to a USB Type A to USB Type C adapter cable.
4. Please connect a USB Type A to USB Type C adapter cable from the USB Type A interface of your laptop to the USB Type C interface of your RMC-2P. Once the USB Type C cable is connecting to your RMC-2P, you can release your fingers from the “PST1” and “PST4” buttons. At this time, the PST1 to PST 4 buttons will be blinking sequentially, which means your RMC-2P is currently in firmware update mode.
5. Please check the IP address and MAC address of your RMC-2P by using the latest DVIP Configuration Tool which can be downloaded from the official product page of the “Datavideo DVIP Control Protocol from Datavideo official website <https://www.datavideo.com/product/DVIP>
6. You can get the IP and MAC addresses of your RMC-2P by using the DVIP Configuration Tool.



7. Please make sure that all the firmware-related files including rmc-2_V1050, DVIP_UpgradeTool, DVIP_Config.cfg, mingwm10.dll, and wxmsw28u_gcc_custom.dll are placed in the same file folder.

📄 DVIP_Config.cfg

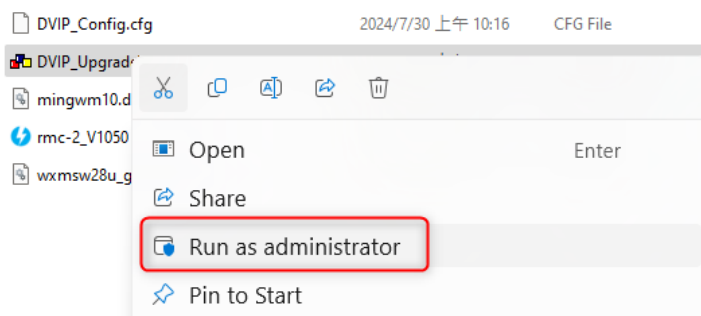
📁 DVIP_UpgradeTool

📄 mingwm10.dll

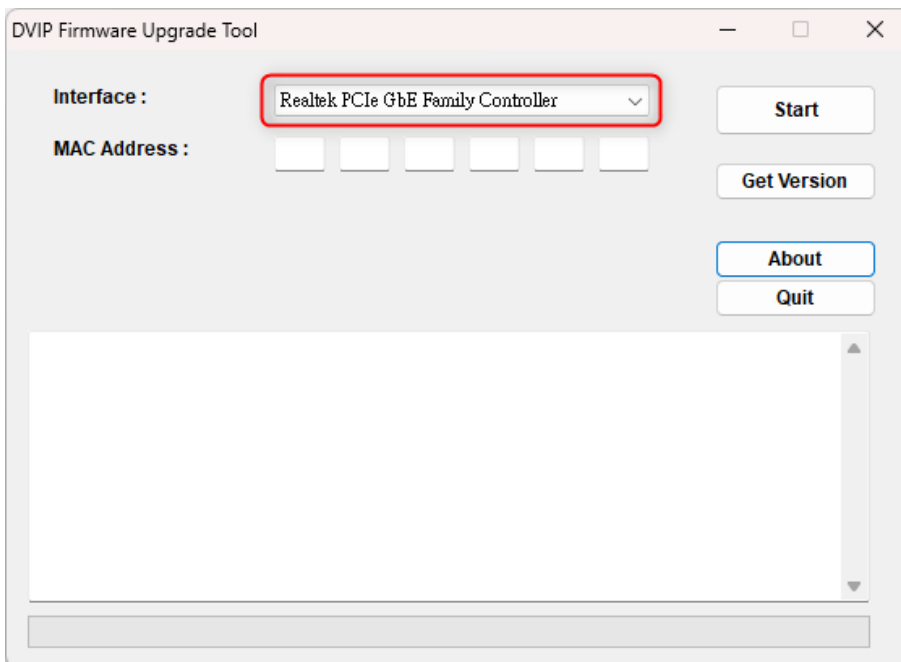
⚡ rmc-2_V1050

📄 wxmsw28u_gcc_custom.dll

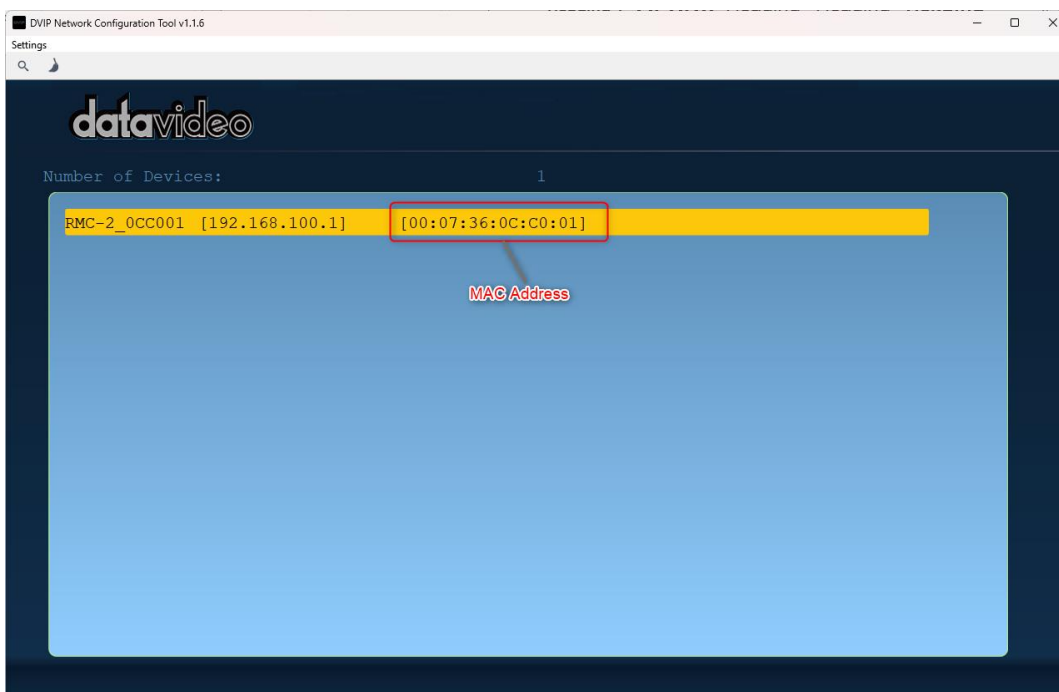
8. Please run the “DVIP_UpgradeTool.exe”, please right-click the mouse and then click “run as administrator”.

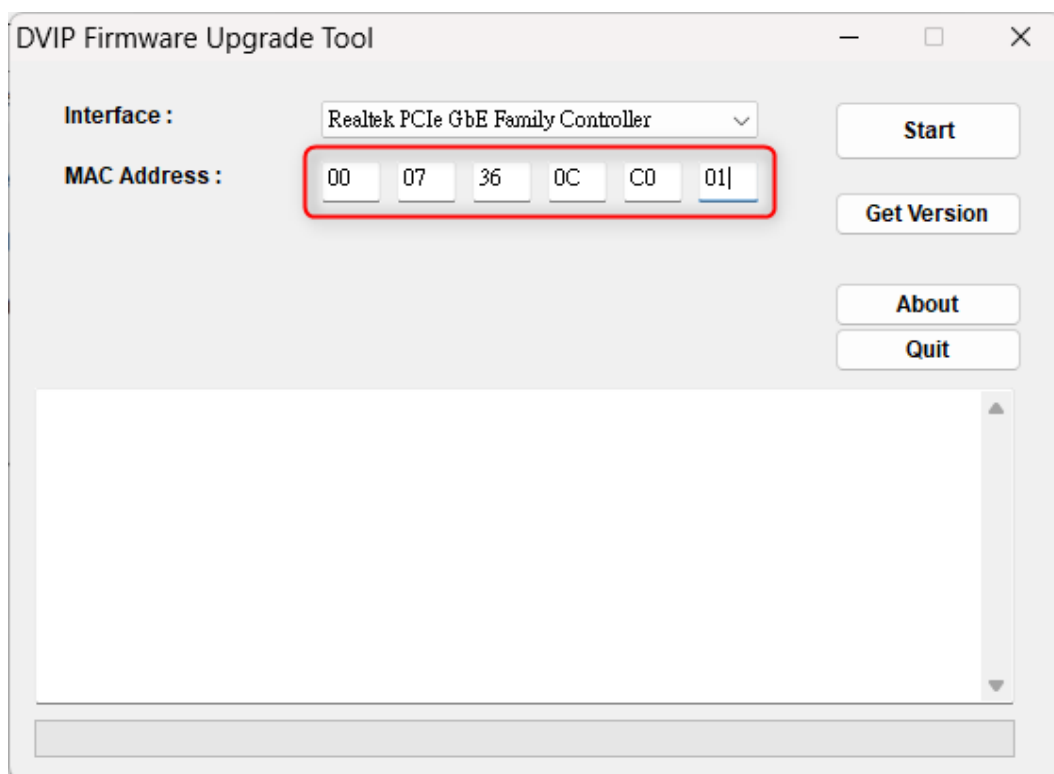


9. Please select your Ethernet Card from the “Interface” drop-down menu.

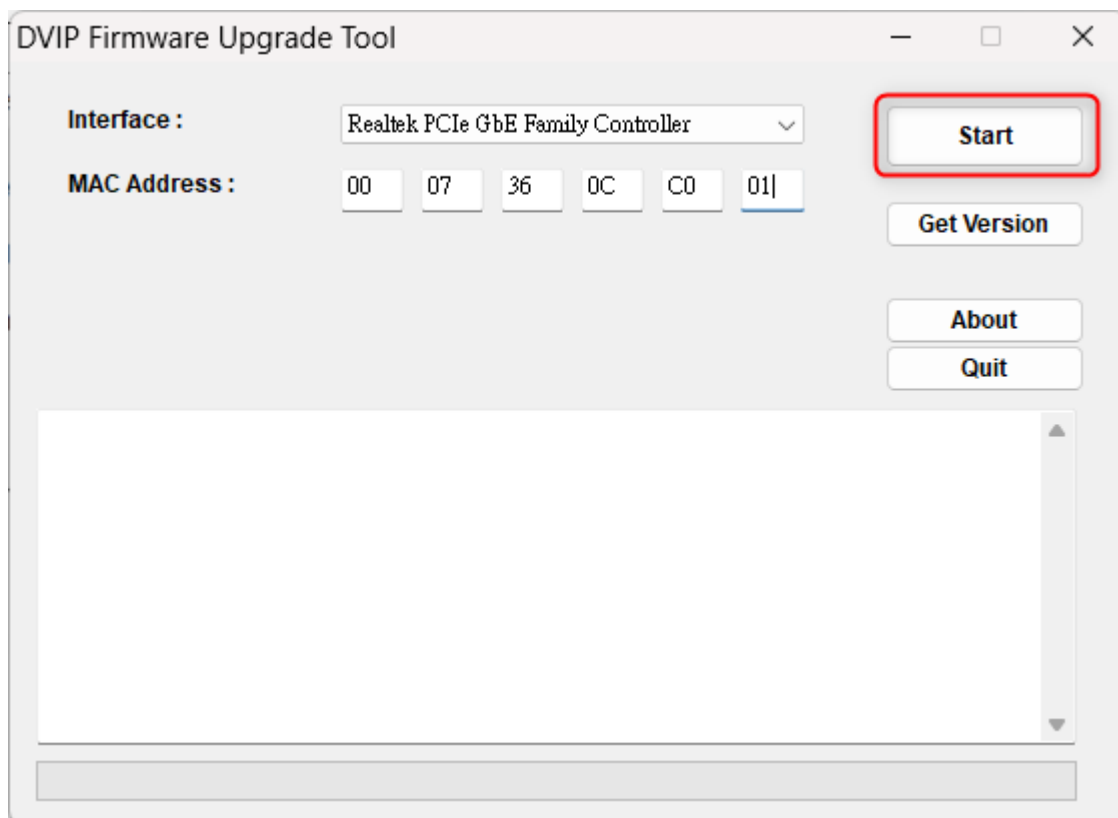


10. Once the DVIP_UpgradeTool is launched, please enter the DVIP MAC Address of your RMC-2P which is shown in the following diagram. The MAC Address can be obtained by Datavideo Network Configuration Tool which can be downloaded from Datavideo official website www.datavideo.com. The MAC Address of this example is 00/07/36/0C/C0/01. So, please enter the MAC Address into the “MAC Address” option of the DVIP Firmware Upgrade Tool.

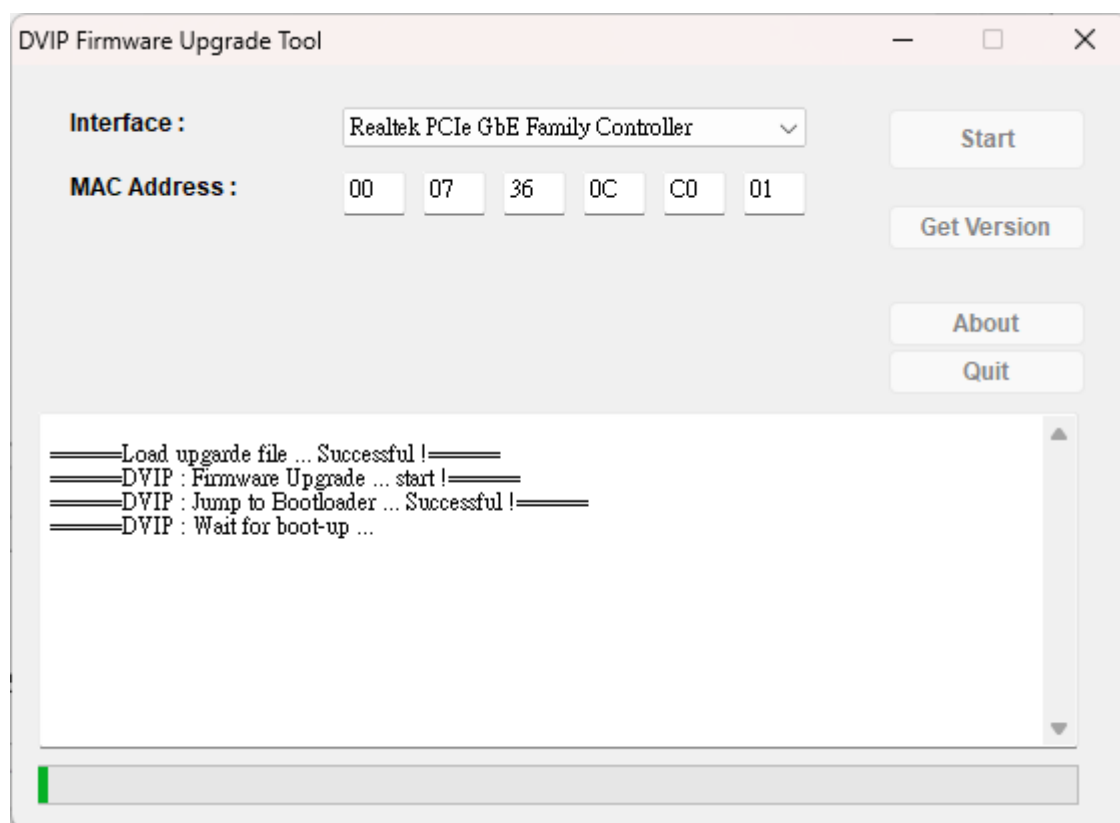




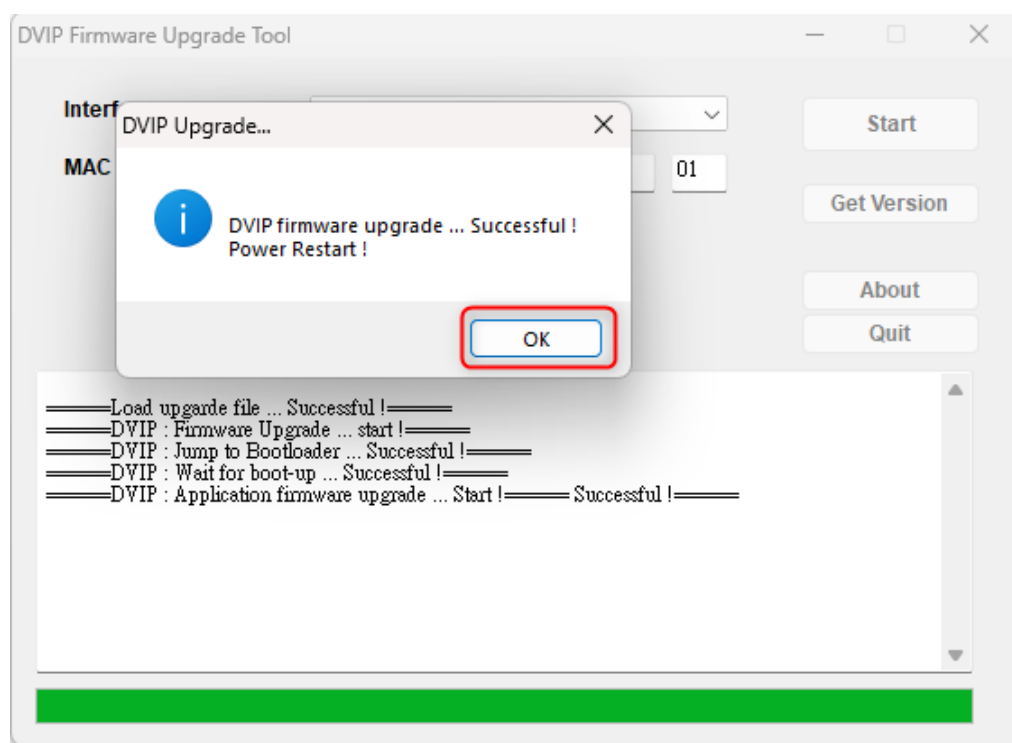
11. After the MAC Address is entered, please press the “Start” button.



12. The firmware updated procedure will be started.

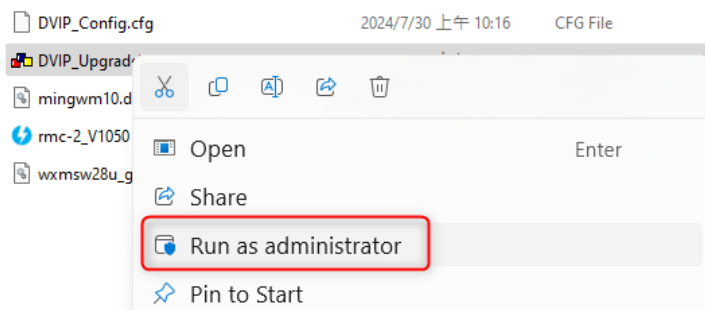


13. After the whole firmware update procedure is completed, a reminder will be shown to remind you that the DVIP firmware is updated successfully. Please press the "OK" button.

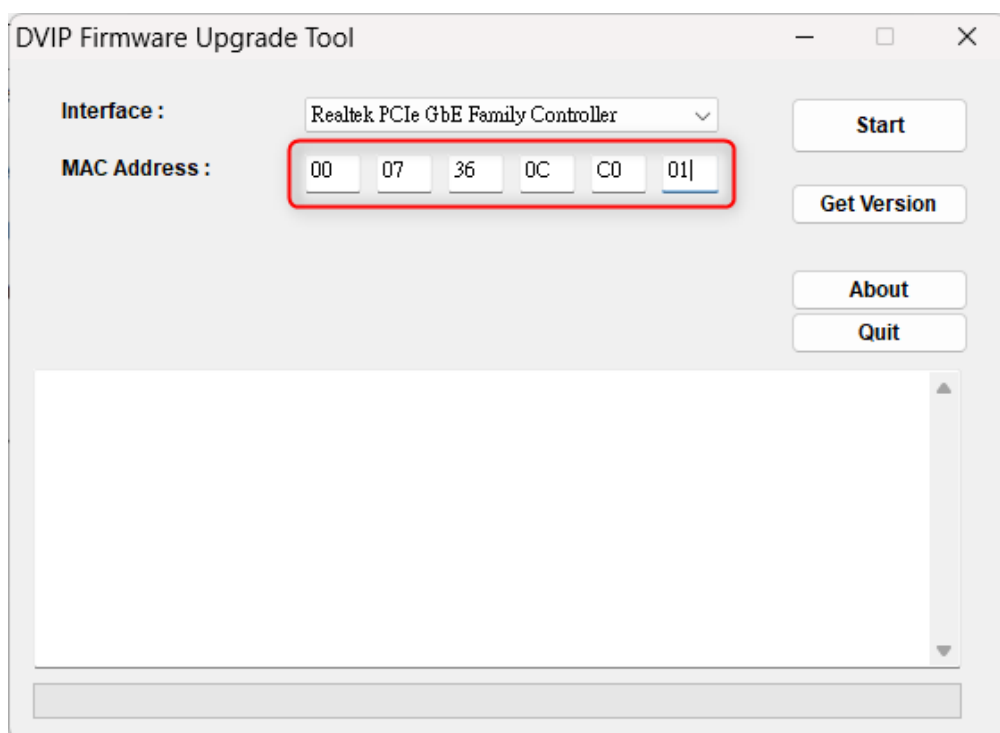


Checking the Updated Firmware Version

1. After the RMC-2P is rebooted manually, please run the “DVIP_UpgradeTool.exe” as administrator.



2. Please enter the MAC Address of your RMC-2P.



3. Please press the "Get Version" button and then the latest updated firmware version will be shown.

