

## Firmware Update Procedure for HS-1600T MARK II

### 1. Introduction

Firmware update is performed by connecting the target HS-1600T MARK II 4-Channel HD/SD HDBaseT Portable Video Streaming Studio to the Ethernet port of a Windows Computer.

This firmware update procedure applies to the following product.

Product Model	HS-1600T MARK II
Product Name	4-Channel HD/SD HDBaseT Portable Video Streaming Studio

There is one firmware file

● Firmware file x 1: NVS31\_MKII \_2\_1\_0.tar

**Note: This firmware version is for the serial number before 00747527 (00747527 is included), if your serial number is after 00747528 (00747528 is included), please use newer version firmware.**

This document describes how to perform firmware update on a Windows computer.

Screen images from the Windows 10 operating system are used in this document as an example. Images used in this document may differ from the actual screens.

For details on Windows and computer operations, please refer to the instruction manual of your computer.

### 2. Preparation

#### 2.1 System Requirements

A computer that meets the following requirements is necessary to perform the firmware update procedure.

OS	Windows 7, Windows 8, Windows 10
Supported Browsers	Google Chrome 54.0.2840 or above Firefox 50.1.0 or above Internet Explorer 11 Microsoft Edge 79.0.309 or above

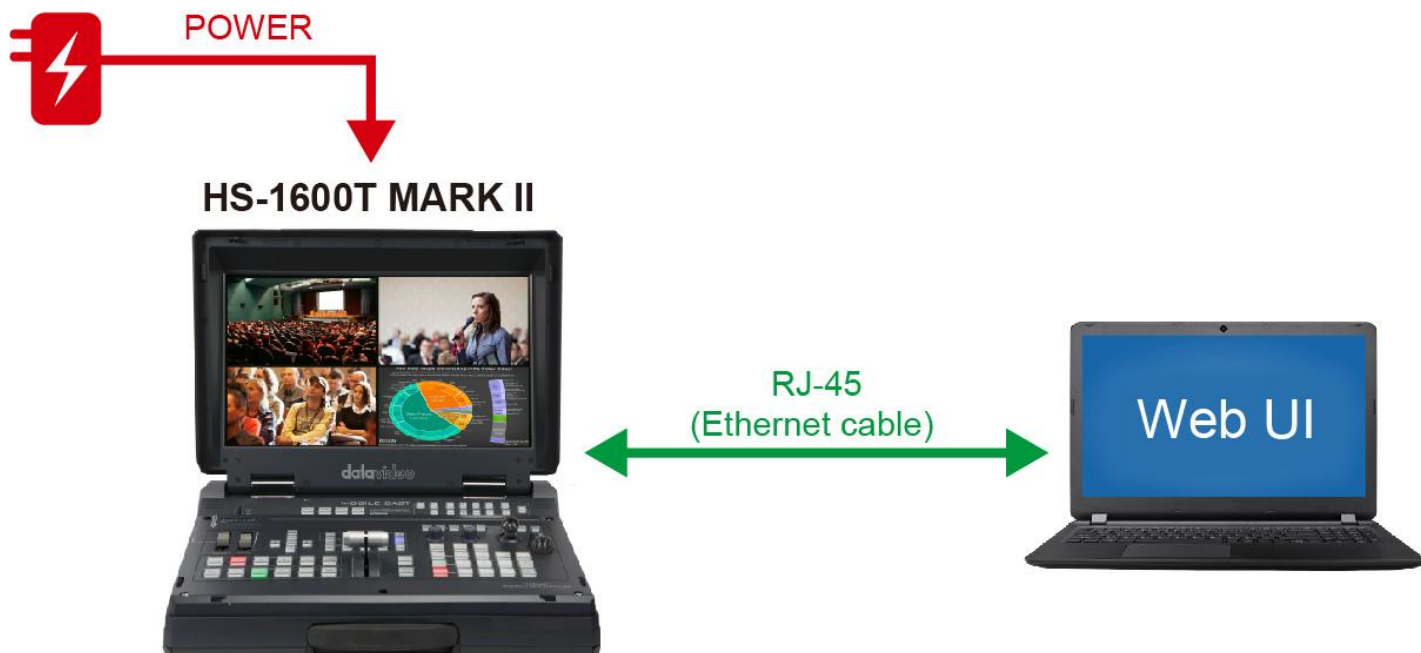
Operation is not guaranteed on all computers that meet the above requirements

## 2.2 Firmware Update Preparation

The following items are required to perform this firmware update. Please prepare this items in advance before performing the update.

HS-1600T MARK II x 1	The HS-1600T MARK II which is needed for updating the firmware.
48V Power adapter x 1	The 48V power adapter for the HS-1600T MARK II.
Laptop x 1	The laptop which is used to connect to the HS-1600T MARK II.
Ethernet Cable x 1	The Ethernet cable which is used to connect the HS-1600T MARK II and your laptop.
Latest Firmware ● NVS31_MARK II_2_1_0.tar	The latest downloaded firmware file.

## 2.3 System Connection Diagram



## **2.4 Checking the Firmware Version**

### **2.4.1. Please reset the IP address of the NVS-31 MARK II to the factory default value 192.168.1.200 according to the chapter 6 of the HS-1600T MARK II user manual.**

Please reset the IP address of the NVS-31 MARK II to the factory default value 192.168.1.200 according to the HS-1600T MARK II user manual.

### **2.4.2 Please set the IP address of your laptop which is used to connect to the HS-1600T MARK II to be within the same LAN as the NVS-31 MARK II.**

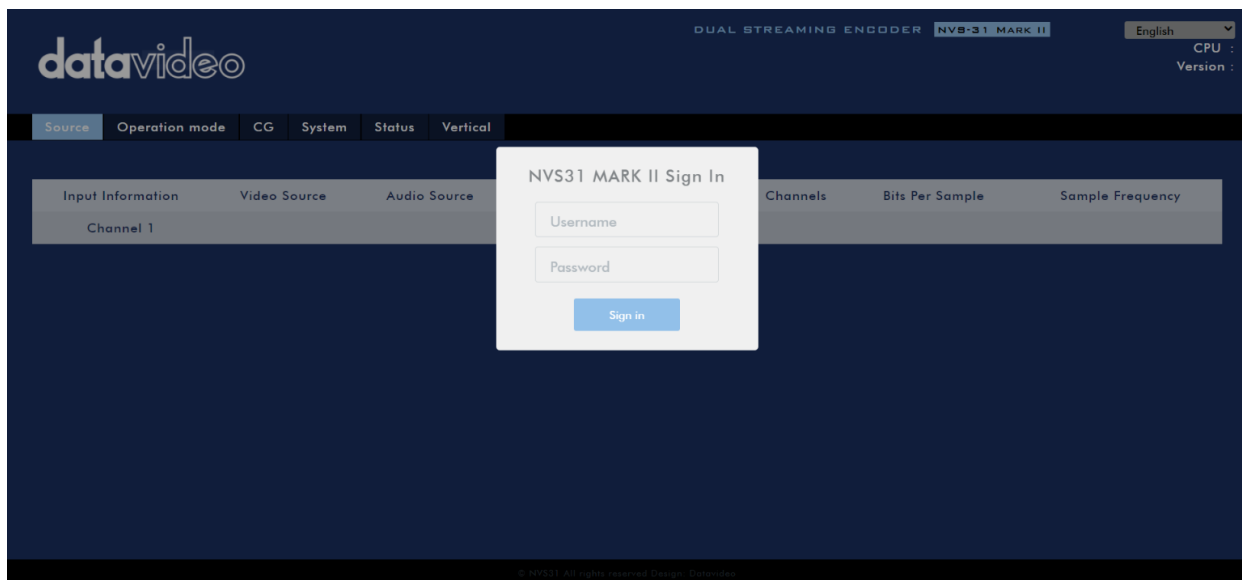
Please set the IP address of your laptop which is used to connect to the HS-1600T MARK II to be within the same LAN as the NVS-31 MARK II.

### **2.4.3 Please use an Ethernet cable to connect from the RJ-45 port of your laptop to the STREAM RJ45 port of the HS-1600T MARK II.**

Please use an Ethernet cable to connect from the RJ-45 port of your laptop to the STREAM RJ-45 port of the HS-1600T MARK II.

### **2.4.4. Please connect to the NVS-31 MARK II web UI by using the default IP address of 192.168.1.200.**

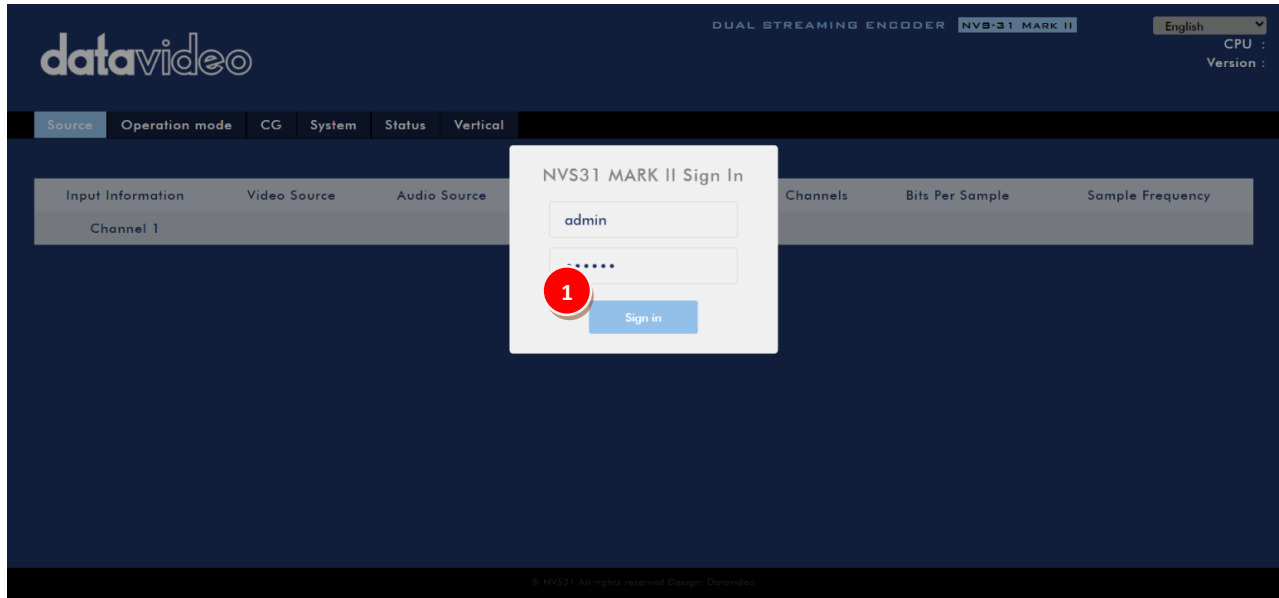
Please connect to the NVS-31 MARK II web UI by using the IP address of the 192.168.1.200. After that, you can see the login page of the NVS-31 MARK II which is shown as following diagram.



## 2.4.5. Please use following information to login into the NVS-31 MARK II web UI.

■ Username: admin

■ Password: 000000



## 2.4.6. After logging into the NVS-31 MARK II web UI, you can see that the current firmware version number.

After logging into the NVS-31 MARK II web UI, you can see that the current firmware version number is located at the top-right side of the screen which is shown as the following diagram.



## **2.5 Preparing the Firmware**

### **2.5.1. Download the firmware**

HS-1600T MARK II Product Page from the Datavideo website:

<https://datavideo.com/product/HS-1600T%20Mark%20II>

### **2.5.2. Unzip the firmware**

Please unzip the downloaded firmware into the hard disk of your laptop and then you can see following firmware file for the NVS-31 MARK II.

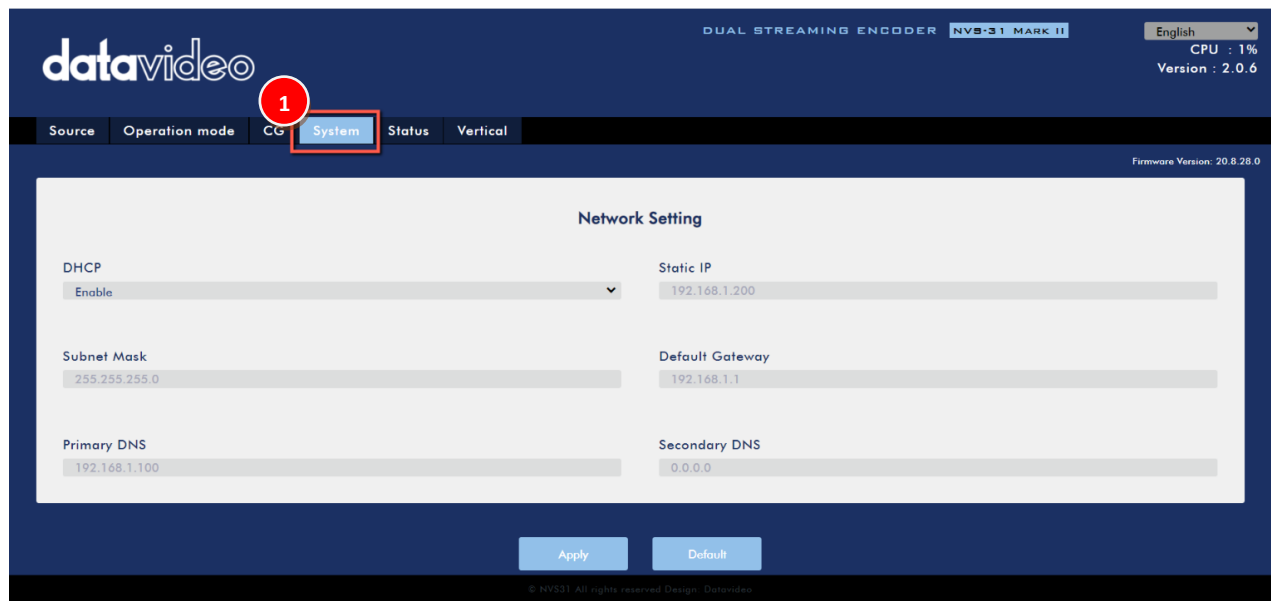
 NVS31\_MKII\_2\_1\_0.tar

## **3. Update**

### **3.1 Updating the firmware**

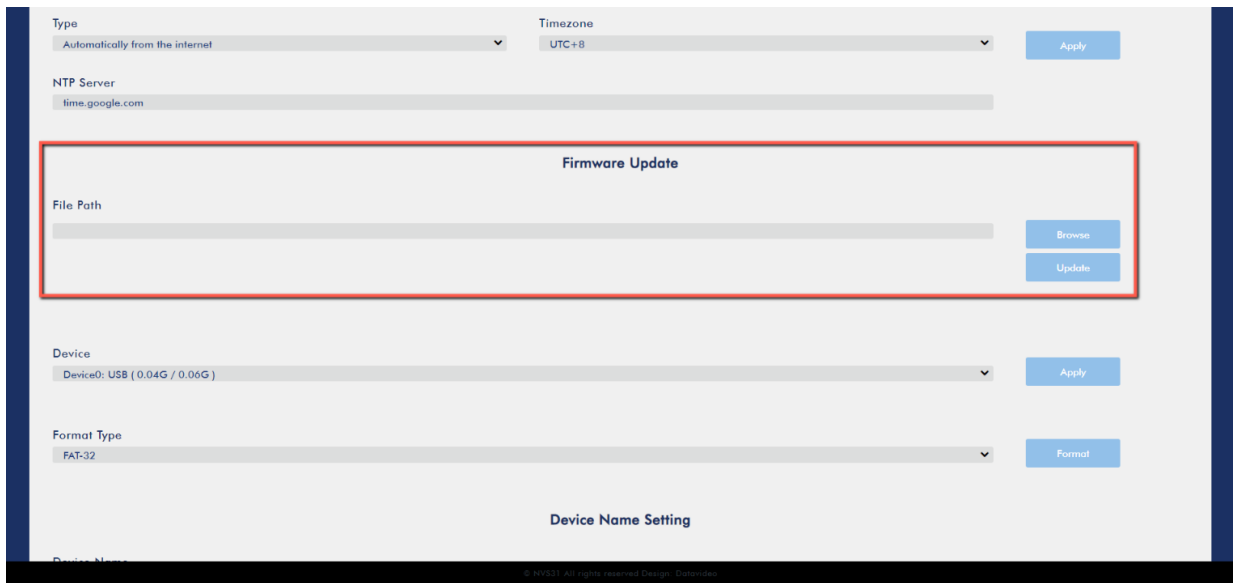
#### **3.1.1. Please click the [System] option from the NVS-31 MARK II web UI.**

Please click the [System] option of the NVS-31 MARK II web UI and then the screen will be shown as the following diagram.



### 3.1.2. You can see the [Firmware Update] section from the NVS-31 MARK II web UI.


You can see the [Firmware Update] section from the NVS-31 MARK II web UI.



The screenshot shows the web UI of the NVS-31 MARK II device. At the top, there are settings for 'Type' (set to 'Automatically from the internet') and 'Timezone' (set to 'UTC+8'), with an 'Apply' button. Below this is the 'NTP Server' field, set to 'time.google.com'. The 'Firmware Update' section is highlighted with a red rectangular box. It contains a 'File Path' input field, a 'Browse' button, and an 'Update' button. Below the 'Firmware Update' section, there are settings for 'Device' (set to 'Device0: USB (0.04G / 0.06G)') and 'Format Type' (set to 'FAT-32'), each with an 'Apply' or 'Format' button respectively. At the bottom, there is a 'Device Name Setting' section.

### 3.1.3 Please click the [Browse] button

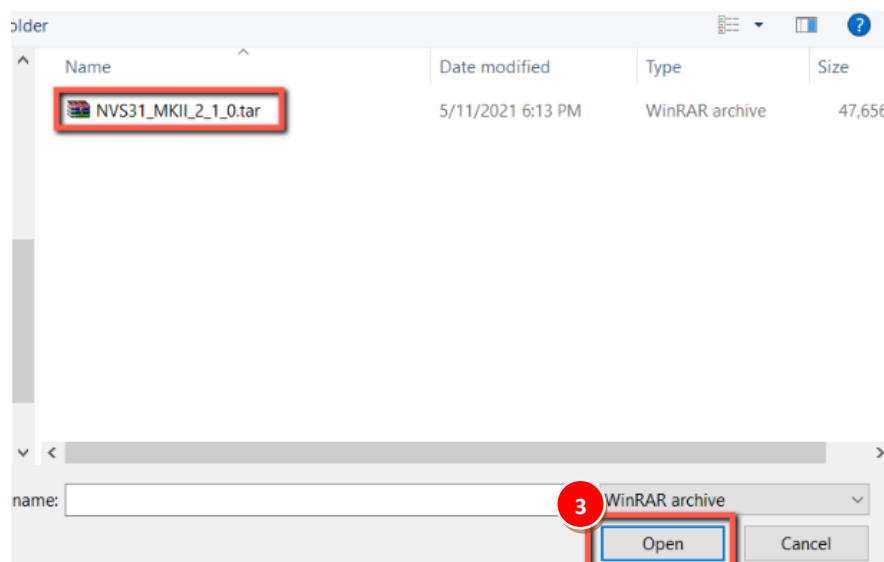
Please click the [Browse] button to select the downloaded firmware file for updating the firmware.



This is a close-up of the 'Firmware Update' section from the previous screenshot. The 'File Path' input field is empty. The 'Browse' button is highlighted with a red rectangular box and a red circle containing the number '2'. The 'Update' button is also visible below it.

### 3.1.4. Select the latest firmware file from the hard disk of your laptop

Please select the firmware file from the hard disk of your laptop.



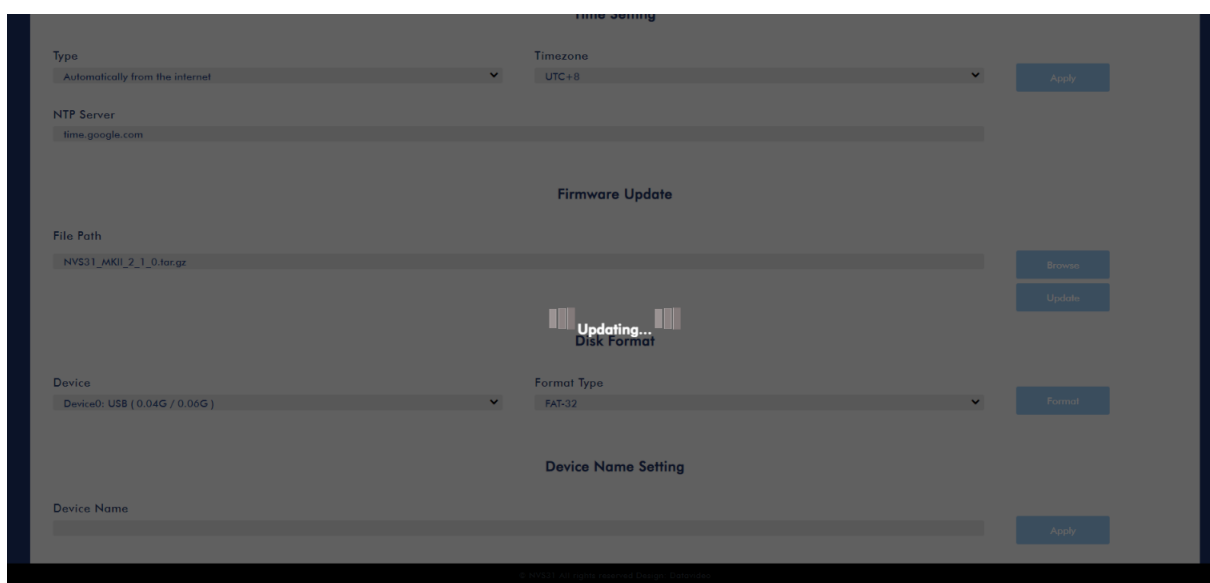
### 3.1.5. Click the [Update] button.

Please click the [Update] button to start the firmware update procedure.



### 3.1.6. The firmware update procedure will be started.

The firmware update procedure will be started.



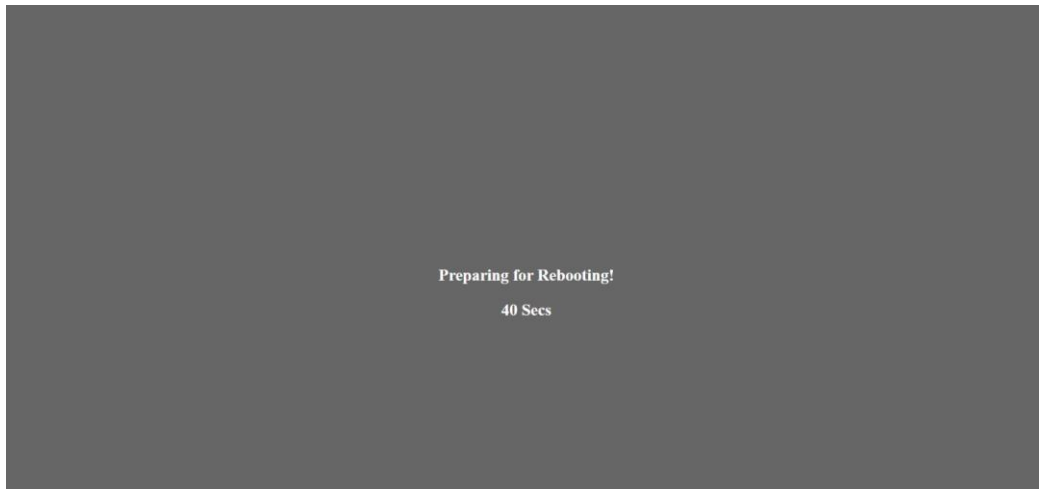
### 3.1.7. Click the [confirm/OK] button.

After the firmware update procedure is done, you will see a prompted dialog box to show that the firmware update is done successfully. Please click the [confirm/OK] button.

---

### **3.1.8. The device rebooting countdown screen will show**

The device rebooting countdown screen will show and then the device will be rebooted.



### **3.1.9. After the system rebooting is done, the whole firmware update procedure is done successfully.**

After the system is rebooted, the whole firmware update procedure is done successfully.