

DVIP Firmware Update Procedure for PTC-150/PTR-10/PTR-10 MARK II

1. Introduction

Firmware update is performed by connecting from the DVIP port of the PTC-150, PTR-10, or PTR-10 MARK II to the RJ-45 Ethernet interface of your laptop by an RJ-45 Ethernet cable

Note:

This software update procedure applies to the following product.

Product Model	PTC-150/PTR-10/PTR-10 MARK II
Product Name	HD/SD-SDI PTZ Camera/ Robotic Pan Tilt Head

There are five files include DVIP firmware, DVIP firmware upgrade tool, firmware upgrade configuration file, mingwm10.dll, and wxmsw28u_gcc_custom.dll

- **DVIP Firmware : DVIP_PTC-150_AP_2v012.bin**
- **DVIP Firmware Upgrade Tool: DVIP_UpgradeTool.exe**
- **Firmware Upgrade Configuration File: DVIP_Config.cfg**
- **mingwm10.dll & wxmsw28u_gcc_custom.dll**

Note: All of the above-mentioned five files must be placed in the same file folder.

This document describes how to perform a software update on a Windows computer.

Screen images from the Windows 10 operating system are used in this document as an example. Images used in this document may differ from the actual screens.

For details on Windows and computer operations, please refer to the instruction manual of your computer.

2. Preparation

2.1 System Requirements

A computer that meets the following requirements is necessary to perform the Software update procedure.

Laptop	A normal laptop is needed.
--------	----------------------------

Operation is not guaranteed on all computers that meet the above requirements

2.2 Software Update Preparation

The following items are required to perform this software update. Please prepare these items in advance before performing the update.

PTC-150 x1, PTR-10 x 1, or PTR-10 MARK II x 1	The PTC-150 PTR-10 or PTR-10 MARK II is needed for updating the DVIP firmware.
12V Power Adapter x 1	The 12V power adapter for the PTC-150, PTR-10, or PTR-10 MARK II.
Laptop x 1	The laptop is used to download and save the DVIP firmware for the PTC-150, PTR-10, or PTR-10 MARK II.
RJ-45 Ethernet Cable x 1	This RJ-45 Ethernet Cable is needed to connect from the laptop to the DVIP port of the PTC-150, PTR-10 or PTR-10 MARK II.
Latest DVIP firmware and related files ● DVIP firmware : DVIP_PTC-150_AP_2v012.bin ● DVIP Firmware Upgrade Tool: DVIP_UpgradeTool.exe ● Firmware Upgrade Configuration File: DVIP_Config.cfg ● mingwm10.dll & wxmsw28u_gcc_custom.dll	The latest firmware and related files for the PTC-150, PTR-10 or PTR-10 MARK II DVIP board. ● DVIP firmware : DVIP_PTC-150_AP_2v012.bin ● DVIP Firmware Upgrade Tool: DVIP_UpgradeTool.exe ● Firmware Upgrade Configuration File: DVIP_Config.cfg ● mingwm10.dll & wxmsw28u_gcc_custom.dll

2.3 System Connection Diagram

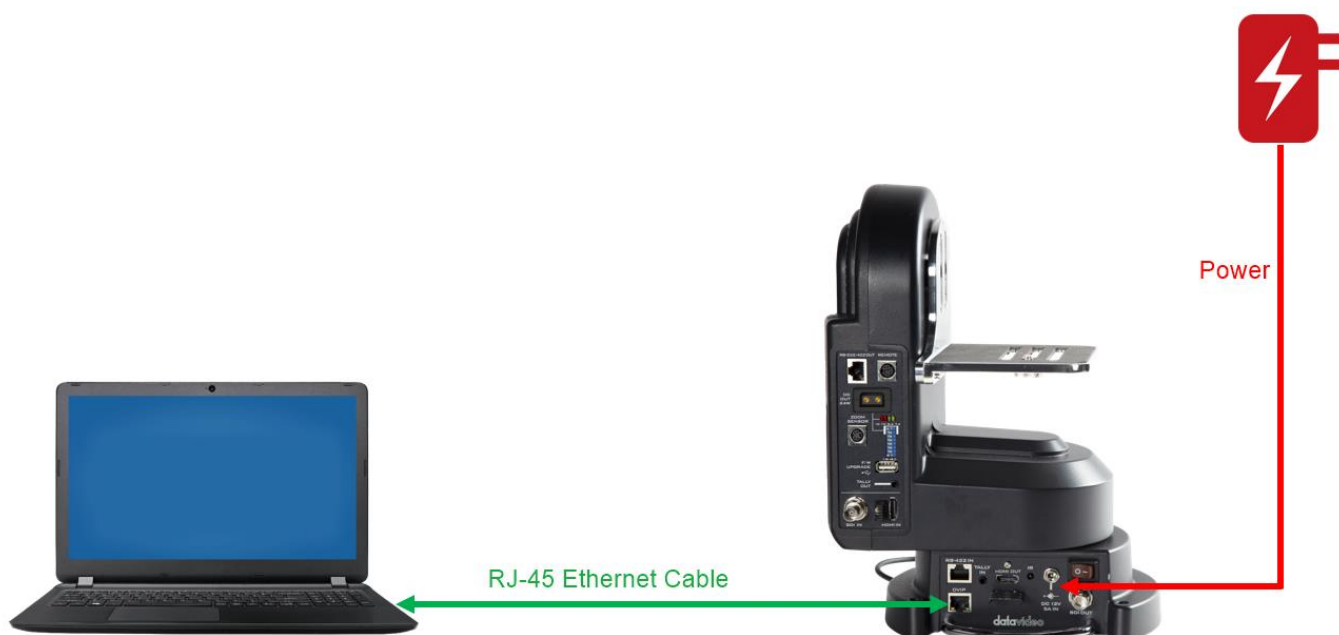
PTC-150: DVIP Firmware Update



PTR-10: DVIP Firmware Update



PTR-10 MARK II: DVIP Firmware Update



2.4 Checking the Software Version

2.4.1. Please connect an RJ-45 Ethernet cable from the DVIP port of the PTC-150, PTR-10 or PTR-10 MARK II to the Ethernet port of your laptop.

Please connect an RJ-45 Ethernet cable from the DVIP port of the PTC-150, PTR-10, or PTR-10 MARK II to the Ethernet port of your laptop.

2.4.2. Please connect a DC 12V power adapter.

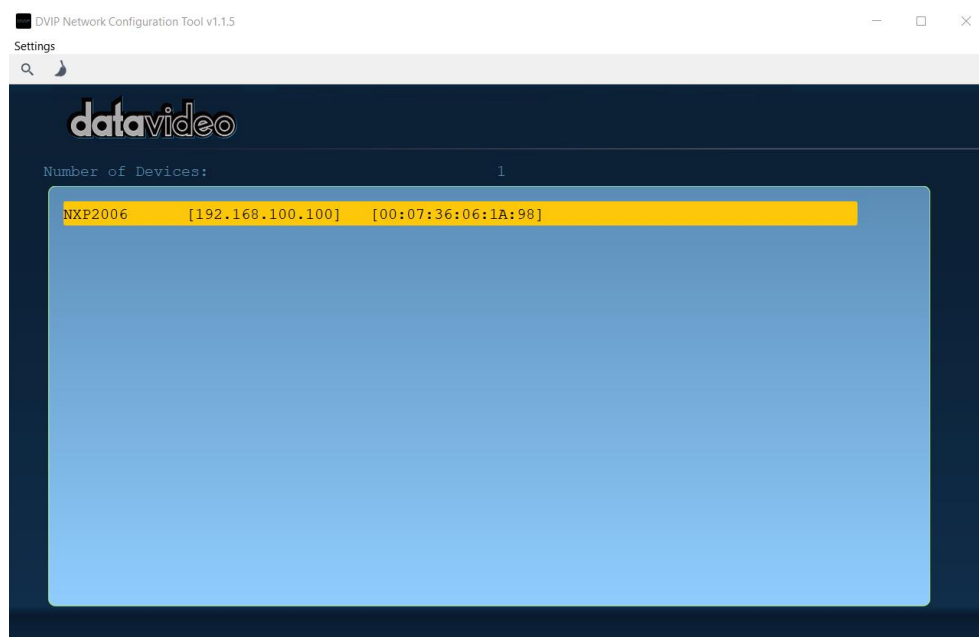
Please connect a DC 12V power adapter to the PTC-150, PTR-10, or PTR-10 MARK II.

2.4.3. Please check the IP address and MAC address of your PTC-150, PTR-10 or PTR-10 MARK II.

Please check the IP address and MAC address of your PTC-150, PTR-10 or PTR-10 MARK II by using the latest DVIP Configuration Tool which can be downloaded from the official product page of the PTC-150, PTR-10, or PTR-10 MARKII from Datavideo official website www.datavideo.com

2.4.4. You can get the IP and MAC addresses of your PTC-150, PTR-10 or PTR-10 MARK II.

You can get the IP and MAC addresses of your PTC-150, PTR-10, or PTR-10 MARK II by using the DVIP Configuration Tool.



2.4.5. Please set the static IP address of your laptop or PC to be within the same LAN as your PTC-150, PTR-10, or PTR-10 MARK II.

General

You can get IP settings assigned automatically if your network supports this capability. Otherwise, you need to ask your network administrator for the appropriate IP settings.

☐ Obtain an IP address automatically

☒ Use the following IP address:

IP address: 192 . 168 . 100 . 50

Subnet mask: 255 . 255 . 255 . 0

Default gateway: . . .

☐ Obtain DNS server address automatically

☒ Use the following DNS server addresses:

Preferred DNS server: . . .

Alternate DNS server: . . .

☐ Validate settings upon exit

Advanced...

OK Cancel

2.4.6 After the Ethernet Interface is ready, please open the “DVIP Firmware Upgrade Tool”.

After the Ethernet Interface is ready, please run the “DVIP Firmware Upgrade Tool”.

DVIP Firmware Upgrade Tool

Interface : Realtek PCIe GBE Family Controller

MAC Address : [][][][][][]

Delay time : 0

Start

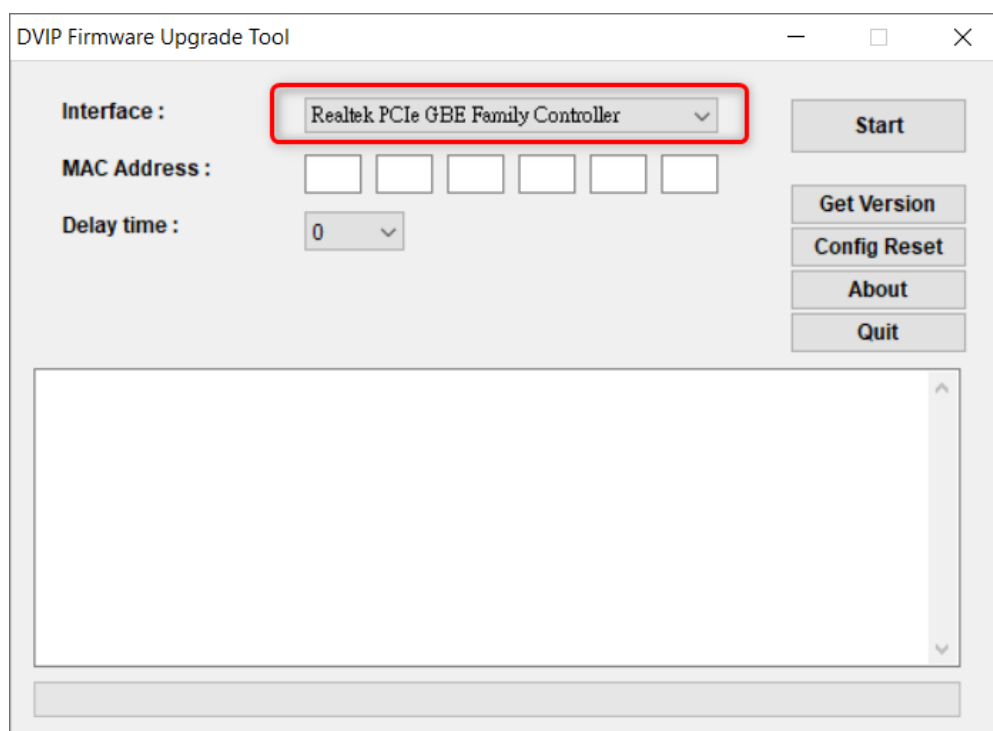
Get Version

Config Reset

About

Quit

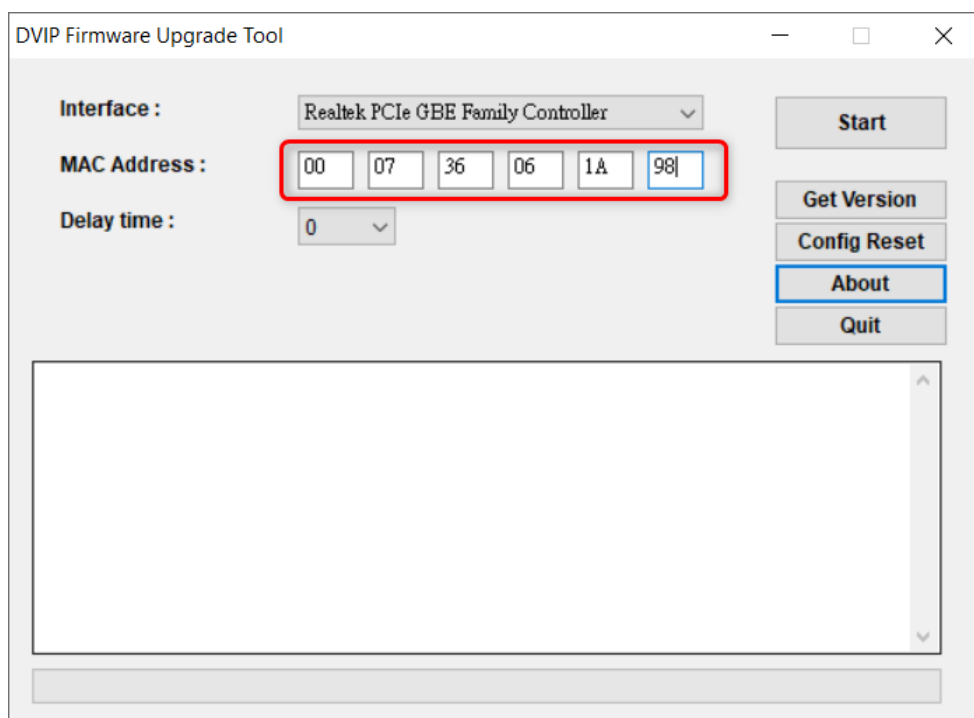
2.4.7 Please select your Ethernet Card from the “Interface” drop-down menu.



The screenshot shows the 'DVIP Firmware Upgrade Tool' window. The 'Interface' dropdown menu is highlighted with a red box and contains the text 'Realtek PCIe GBE Family Controller'. The 'MAC Address' field consists of six empty boxes. The 'Delay time' is set to 0. On the right side, there are buttons for 'Start', 'Get Version', 'Config Reset', 'About', and 'Quit'. A large empty text area is at the bottom.

2.4.8 Please enter the MAC Address into the “MAC Address” columns.

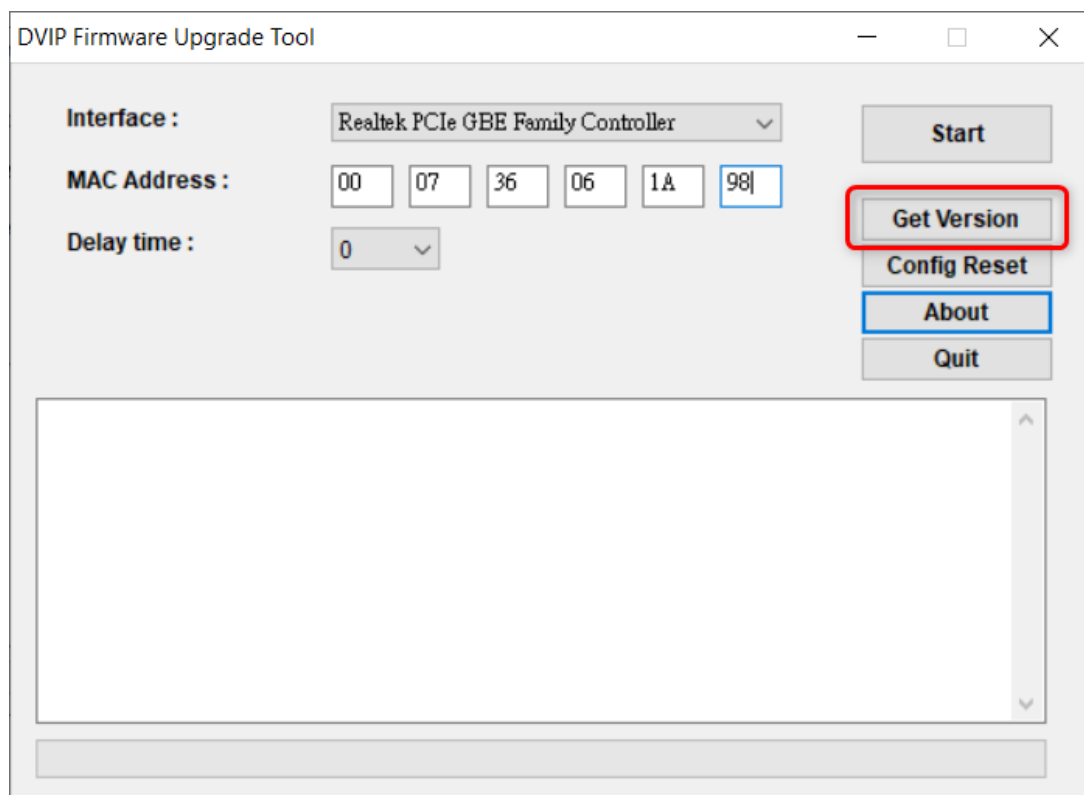
Please enter the MAC Address into the “MAC Address” columns which are shown in the following diagram. In this example, the PTC-150 MAC Address is 00/07/36/06/1A/98.



The screenshot shows the 'DVIP Firmware Upgrade Tool' window. The 'Interface' dropdown menu is still 'Realtek PCIe GBE Family Controller'. The 'MAC Address' field now contains the values '00', '07', '36', '06', '1A', and '98', which are highlighted with a red box. The 'Delay time' is still 0. The 'About' button is highlighted with a blue box. The rest of the interface remains the same.

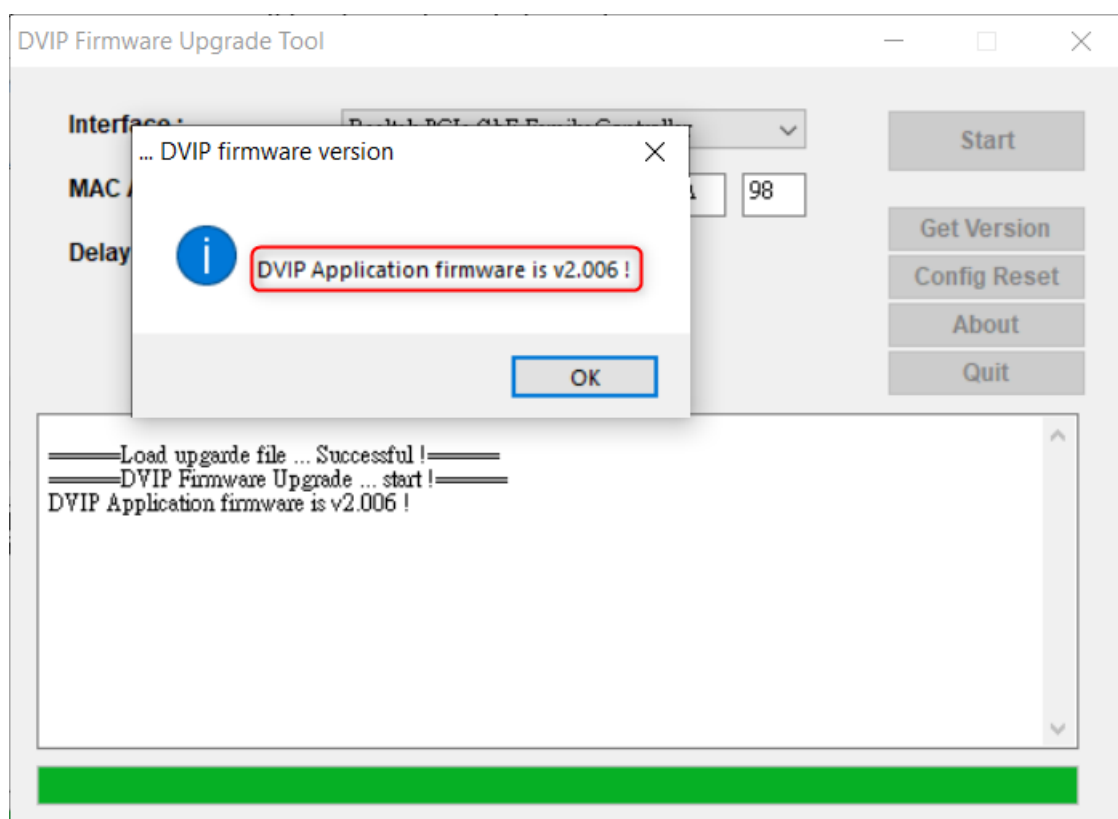
2.4.8 Please press the “Get Version” button.

After the “MAC Address” is entered, please press the “Get Version” button.



2.4.9 The DVIP firmware version will be shown.

The current DVIP firmware version will be shown by a dialogue box.



2.5 Preparing the Firmware

2.5.1. Download the Firmware

PTC-150, PTR-10, or PTR-10 MARK II Product Page from the Datavideo website:

- PTC-150: <https://www.datavideo.com/product/PTC-150>
- PTR-10: <https://www.datavideo.com/product/PTR-10>
- PTR-10 MARK II: <https://www.datavideo.com/product/PTR-10%20MARK%20II>

There are five files include the DVIP firmware, DVIP firmware upgrade tool, firmware upgrade configuration file, mingwm10.dll and wxmsw28u_gcc_custom.dll

- DVIP firmware : DVIP_PTC-150_AP_2v012.bin
- DVIP Firmware Upgrade Tool: DVIP_UpgradeTool
- Firmware Upgrade Configuration File: DVIP_Config.cfg
- mingwm10.dll & wxmsw28u_gcc_custom.dll

Note: After the above-mentioned files are unzipped, please remember to place them in the same file folder.

3. Update

3.1 Updating the Software

3.1.1 Please connect a DC 12V power adapter.

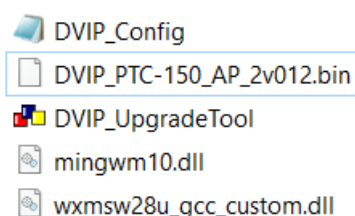
Please connect a DC 12V power adapter to the PTC-150, PTR-10, or PTR-10 MARK II

3.1.2 Please connect an Ethernet cable from the PTC-150, PTR-10 or PTR-10 MARK II to your laptop.

Please connect an Ethernet cable from the DVIP port of the PTC-150, PTR-10 or PTR-10 MARK II to the RJ-45 Ethernet port of your laptop.

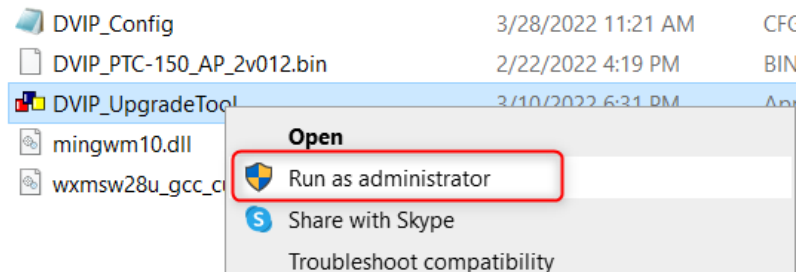
3.1.3 Please make sure that all the firmware-related files are placed in the same file folder.

Please make sure that all the firmware-related files including DVIP firmware, DVIP Firmware Upgrade Tool, Firmware Upgrade Configuration File, mingwm10.dll, and wxmsw28u_gcc_custom.dll are placed in the same file folder.



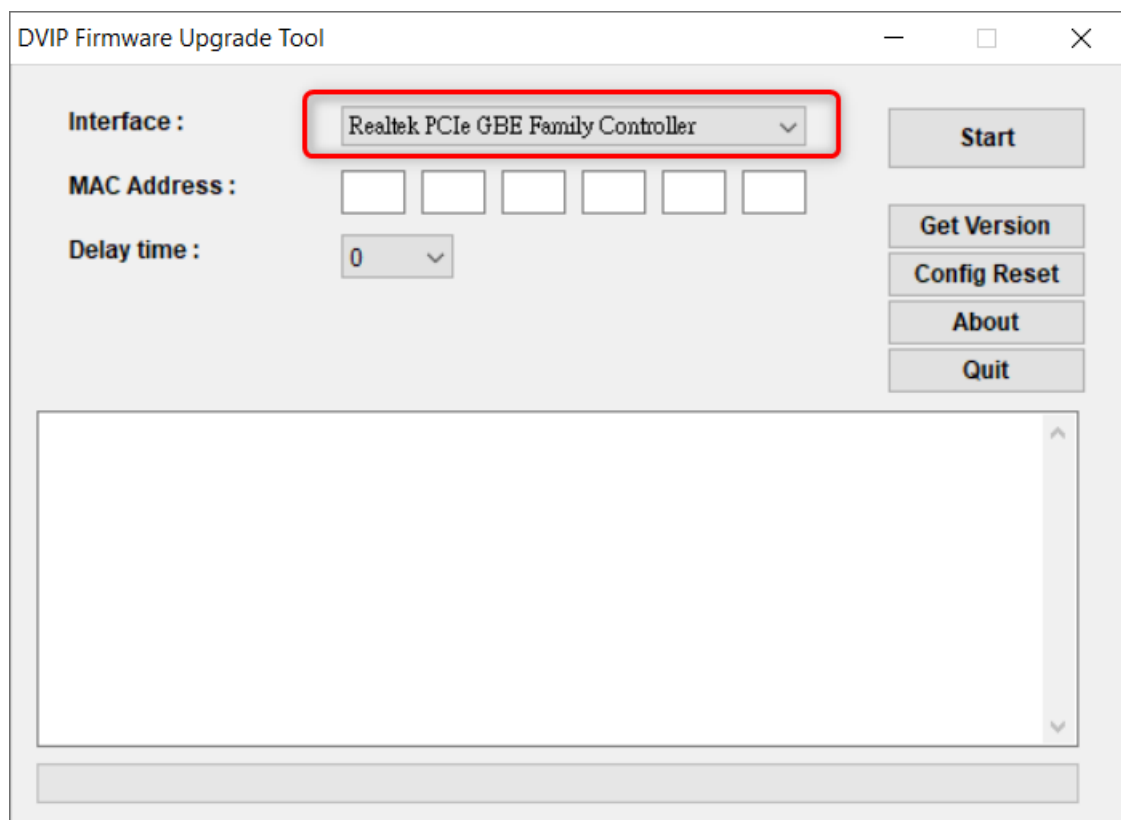
3.1.4 Please run the “DVIP_UpgradeTool.exe”.

Please run the “DVIP_UpgradeTool.exe”, please right-click the mouse and then click “run as administrator”.



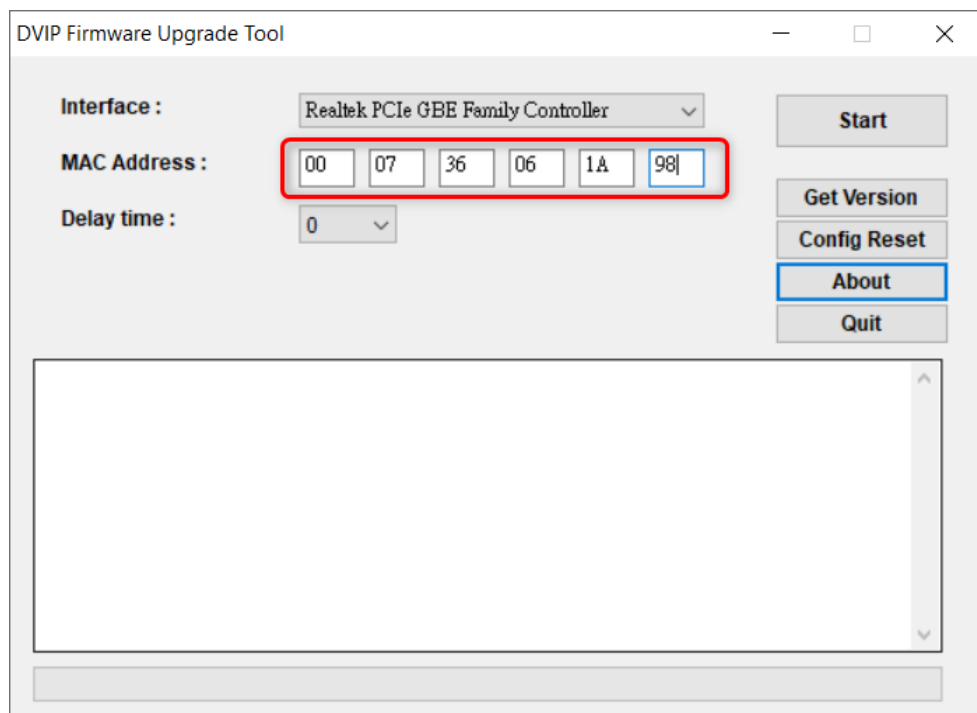
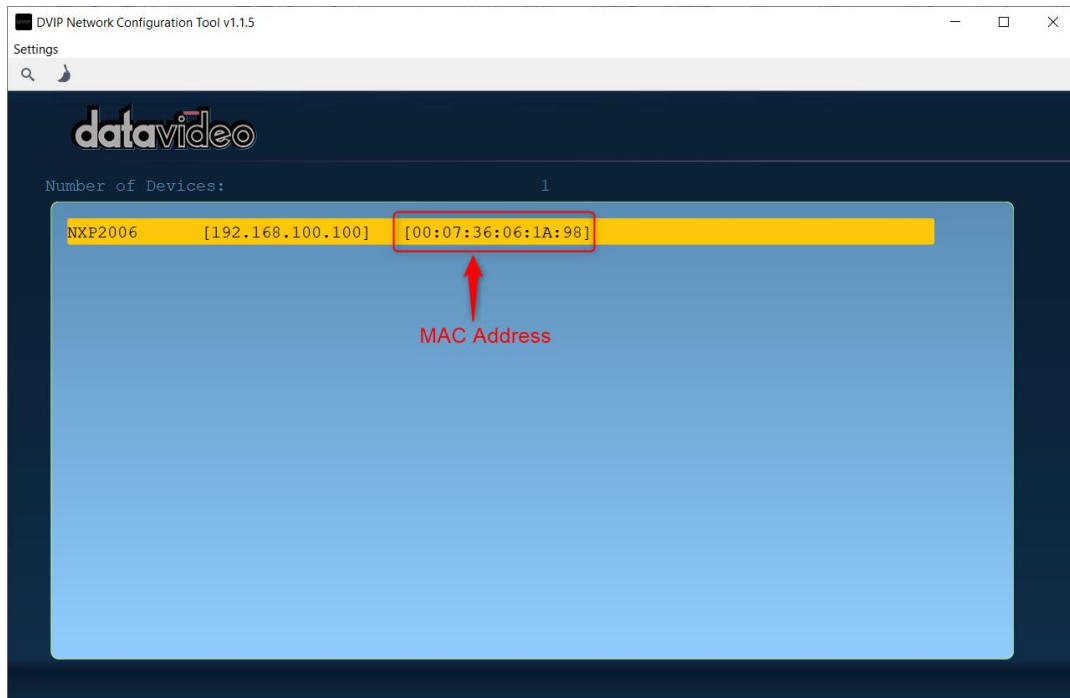
3.1.5 Please select your Ethernet Card.

Please select your Ethernet Card from the “Interface” drop-down menu.



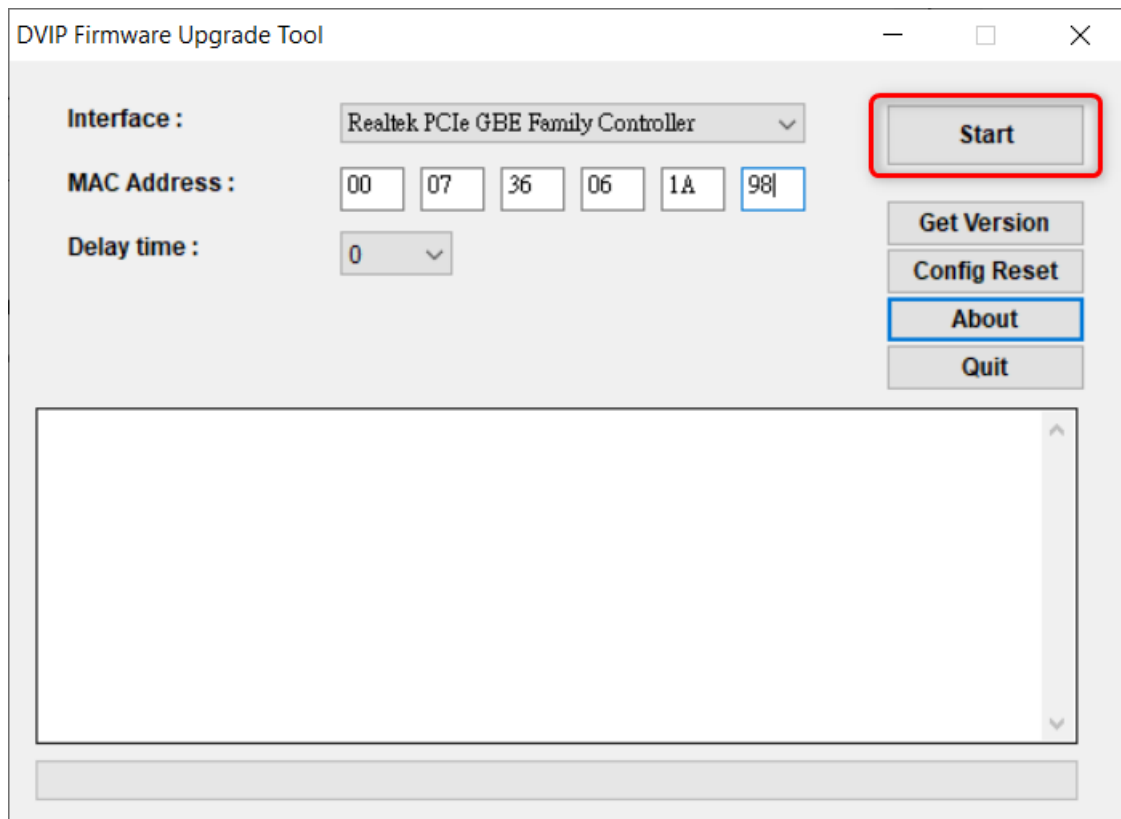
3.1.6 Please enter the DVIP “MAC Address”.

Once the DVIP_UpgradeTool is launched, please enter the DVIP MAC Address of your PTC-150, PTR-10, or PTR-10 MARK II which is shown in the following diagram. The MAC Address can be obtained by Datavideo Network Configuration Tool which can be downloaded from Datavideo official website www.datavideo.com. The MAC Address of this example is 00/07/36/06/1A/98. So, please enter the MAC Address into the “MAC Address” option of the DVIP Firmware Upgrade Tool.



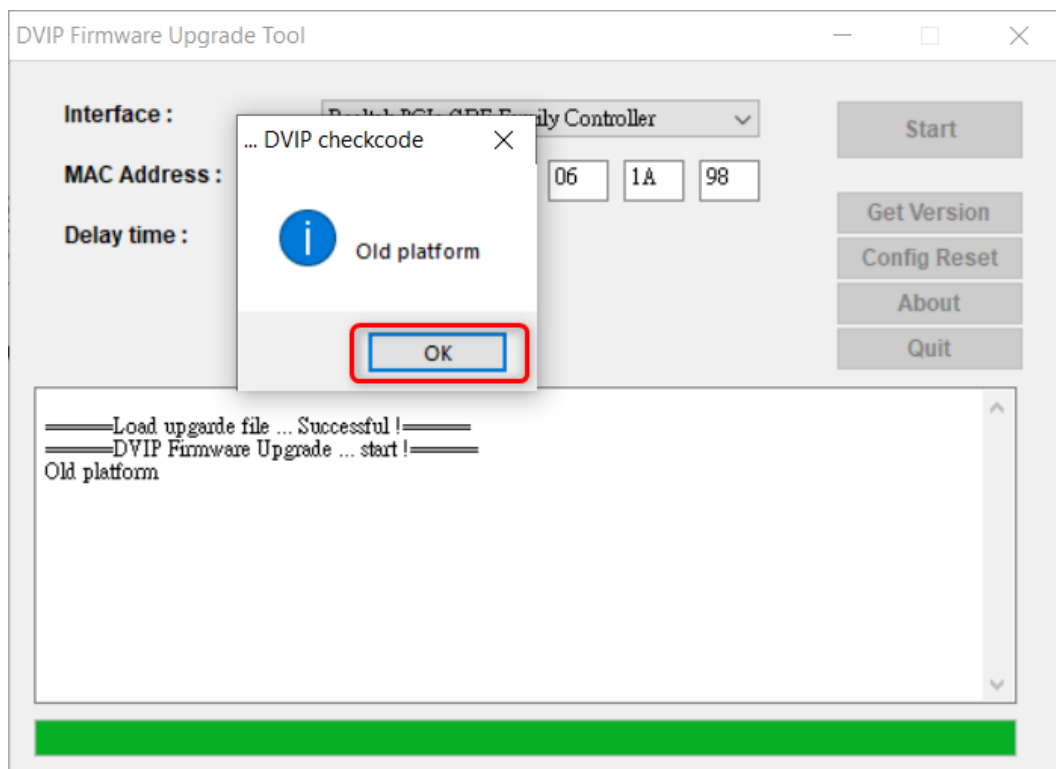
3.1.7 Please press the “Start” button.

After the MAC Address is entered, please press the “Start” button.



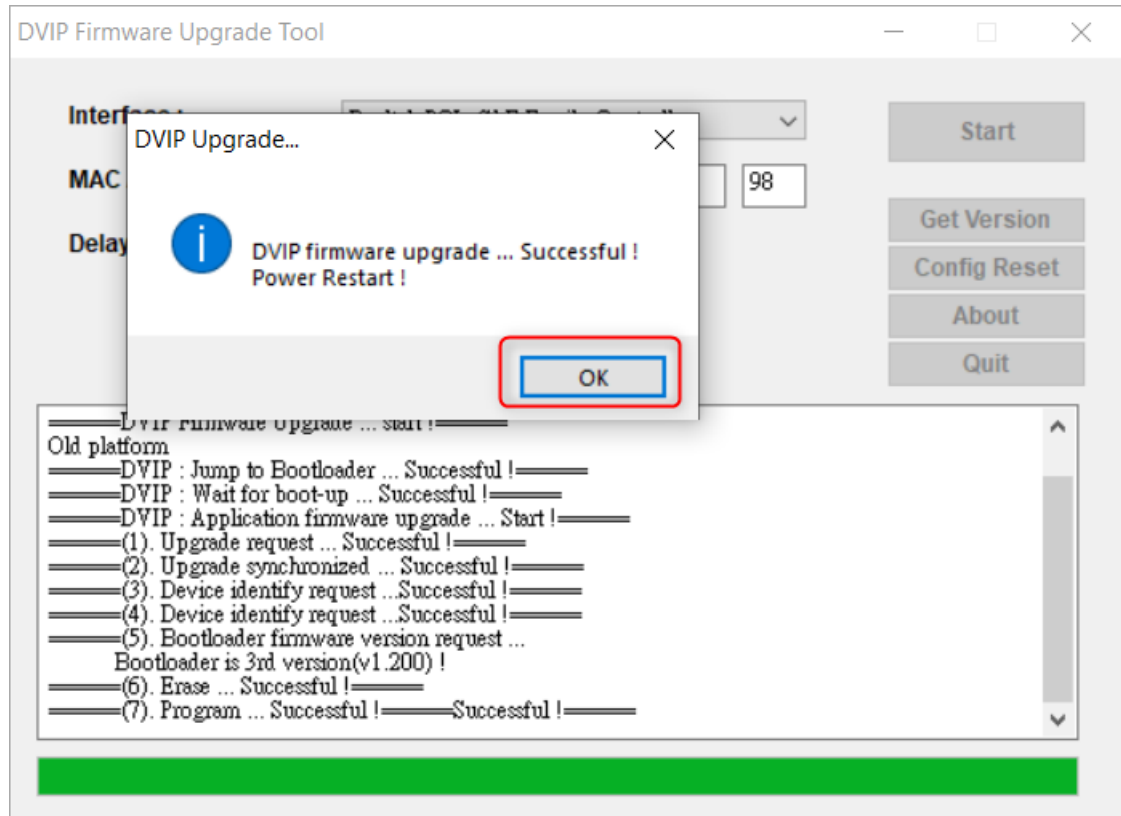
3.1.8 The firmware update procedure will be started.

The firmware updated procedure will be started, and there is an “Old platform” dialogue box that will be shown. Please press the “OK” button.



3.1.9 The real firmware update procedure will start automatically.

The DVIP firmware update procedure will start automatically. After the whole firmware update procedure is completed, a reminder will be shown to remind you that the DVIP firmware is updated successfully. Please press the “OK” button.



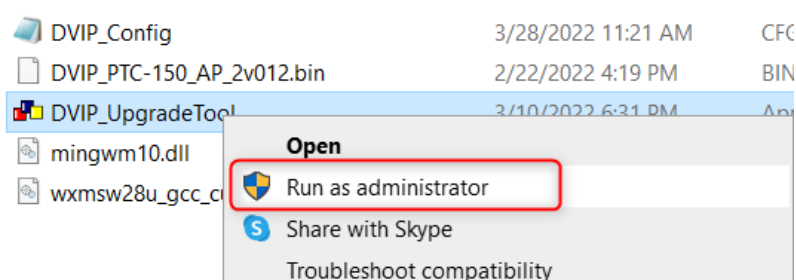
3.1.10. Please reboot your PTC-150, PTR-10 or PTR-10 MARK II.

Please reboot your PTC-150, PTR-10 or PTR-10 MARK II manually and then the whole DVIP firmware update procedure is done successfully.

3.2 Checking the Updated Firmware Version

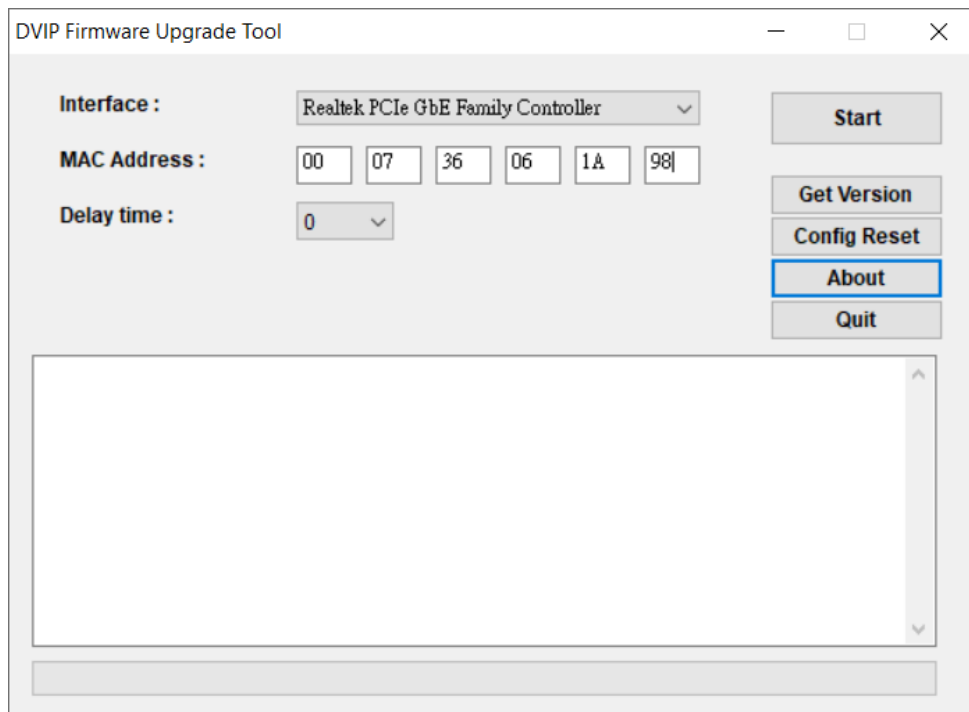
3.2.1. After the PTC-150, PTR-10 or PTR-10 MARK II is rebooted manually, please run the “DVIP_UpgradeTool.exe”.

After the PTC-150, PTR-10 or PTR-10 MARK II is rebooted manually, please run the “DVIP_UpgradeTool.exe” as administrator.



3.2.2. Please enter the MAC Address.

Please enter the MAC Address of your PTC-150, PTR-10 or PTR-10 MARK II.



3.2.3. Please press the “Get Version” button.

Please press the “Get Version” button and then the latest updated firmware version will be shown.

