

## Firmware Update Procedures

### PTC-140T

This document provides procedures for updating the PTC-140T HDBaseT PTZ Camera

### Updating the PTC-140T Camera Firmware(MCU v3.2.5 CAM v2.7.5 AF v4.0.9)

#### What items you should prepare before updating the firmware

- The latest PTC-140T firmware update zip file x1.  
The latest firmware zip file can be downloaded from the PTC-140T product page of the Datavideo official website <https://www.datavideo.com/product/PTC-140T>. After the downloaded firmware zip file is unzipped, you can see two firmware files.
  - **Camera & AF firmware files:** D-PTC-140T\_SY20X\_V2.7.5\_R\_20240515\_AF\_V4.0.9\_R\_20200905.mrg
  - **MCU firmware:** D-PTC-140T\_ARM\_V3.2.5\_20240516.mrg
- PTC-140T camera x 1
- 12V power adapter x 1
- Laptop or PC x 1
- Ethernet Cable x 1

This document describes how to perform firmware update on a **Windows** computer.

#### System Connection Diagram



[Checking the Firmware Version](#)

Page 2

[Before Updating the Firmware](#)

Page 4

[Updating the Camera & AF Firmware](#)

Page 6

[Updating the MCU firmware](#)

Page 8

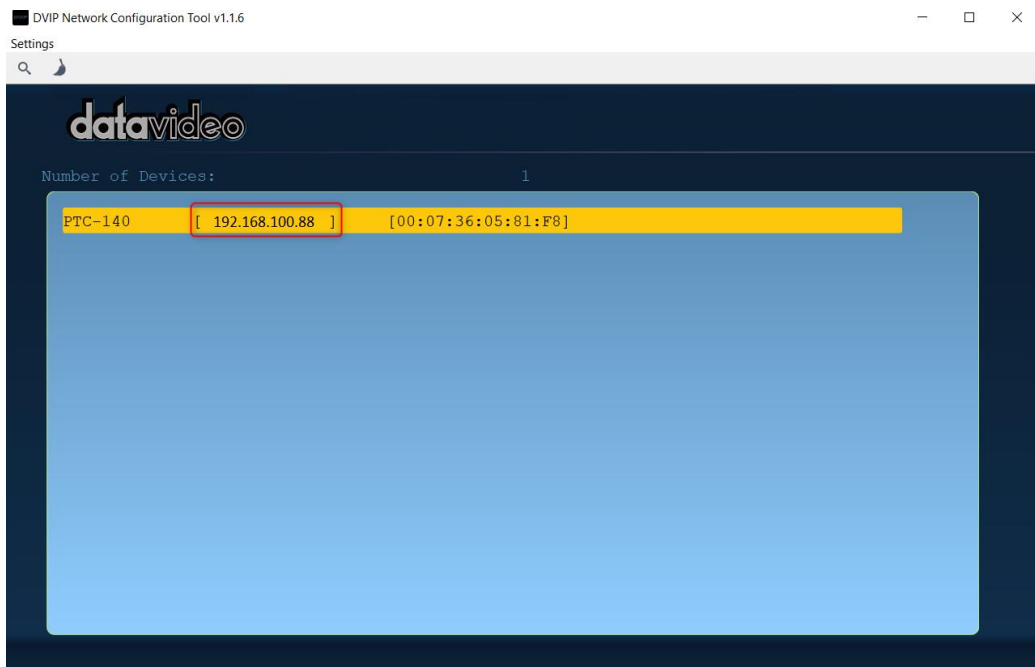
## **Checking the Firmware Version**

1. Please connect an RJ-45 Ethernet cable from the RJ-45 Ethernet interface of your PC or laptop to the LAN interface which is located on the rear panel of the PTC-140T.
2. Please connect a DC 12V power adapter to your PTC-140T camera.
3. The default static IP address of the PTC-140T camera is 192.168.100.88. If the IP address of your PTC-140T camera is not the default value, please use Datavideo DVIP Network Configuration Tool to get the IP address



DVIP  
App

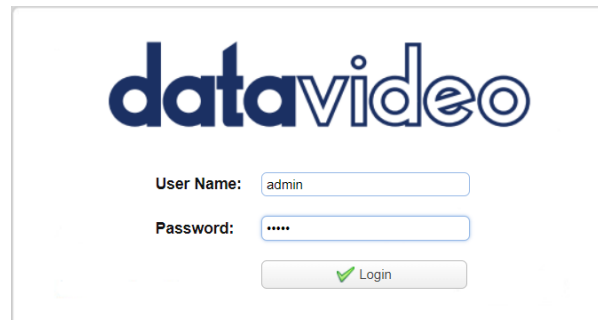
of your PTC-140T. The DVIP Network Configuration Tool can be downloaded from PTC-140T product page <https://www.datavideo.com/product/PTC-140T>



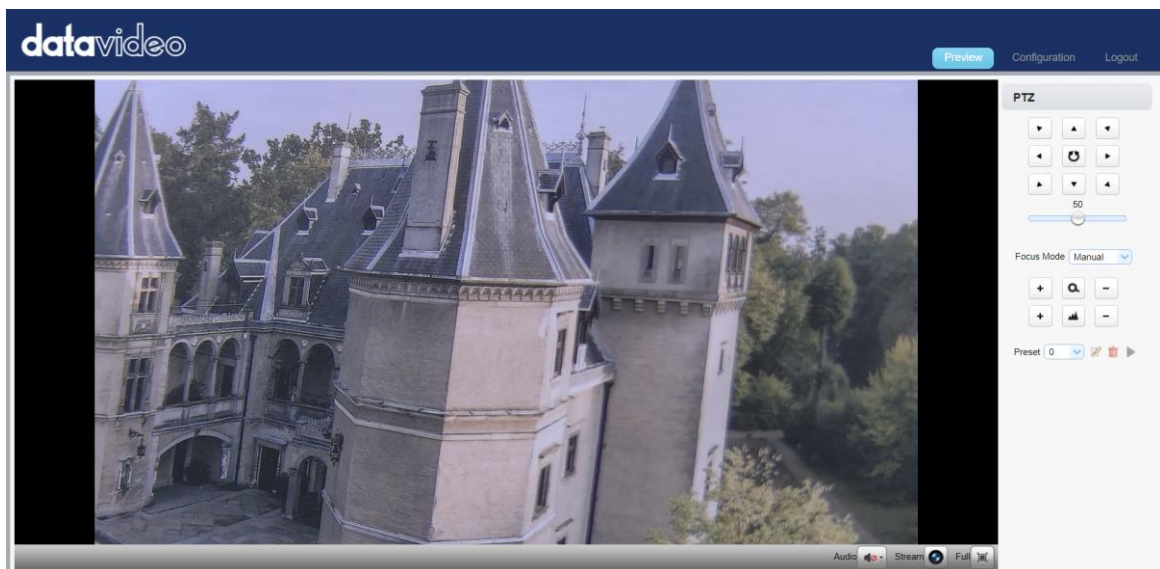
4. After obtaining the IP address of your PTC-140T, please enter the IP address in the address bar of your web browser. After that, you will see the login page of the PTC-140T web UI. Please enter the default User Name and Password for logging into the web UI.

**Default User Name: admin**

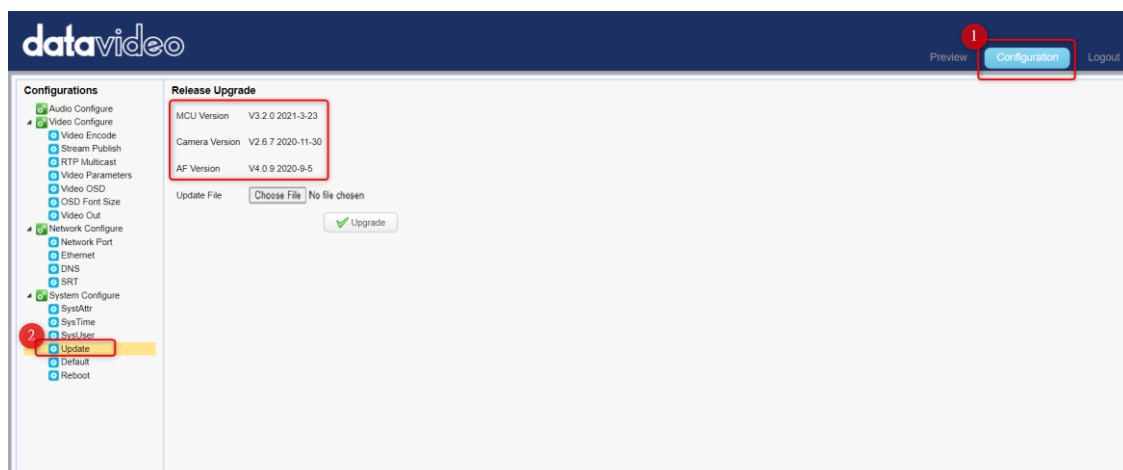
**Default Password: admin**



The login page features the DataVideo logo at the top. Below it, there are two input fields: 'User Name:' with 'admin' entered and 'Password:' with 'admin' entered (masked with dots). A 'Login' button with a green checkmark icon is positioned below the password field.



5. Please press the **Configuration-> Update to** open the firmware update page. After that, you can see the current MCU version, camera version, and AF version for your PTC-140T camera.

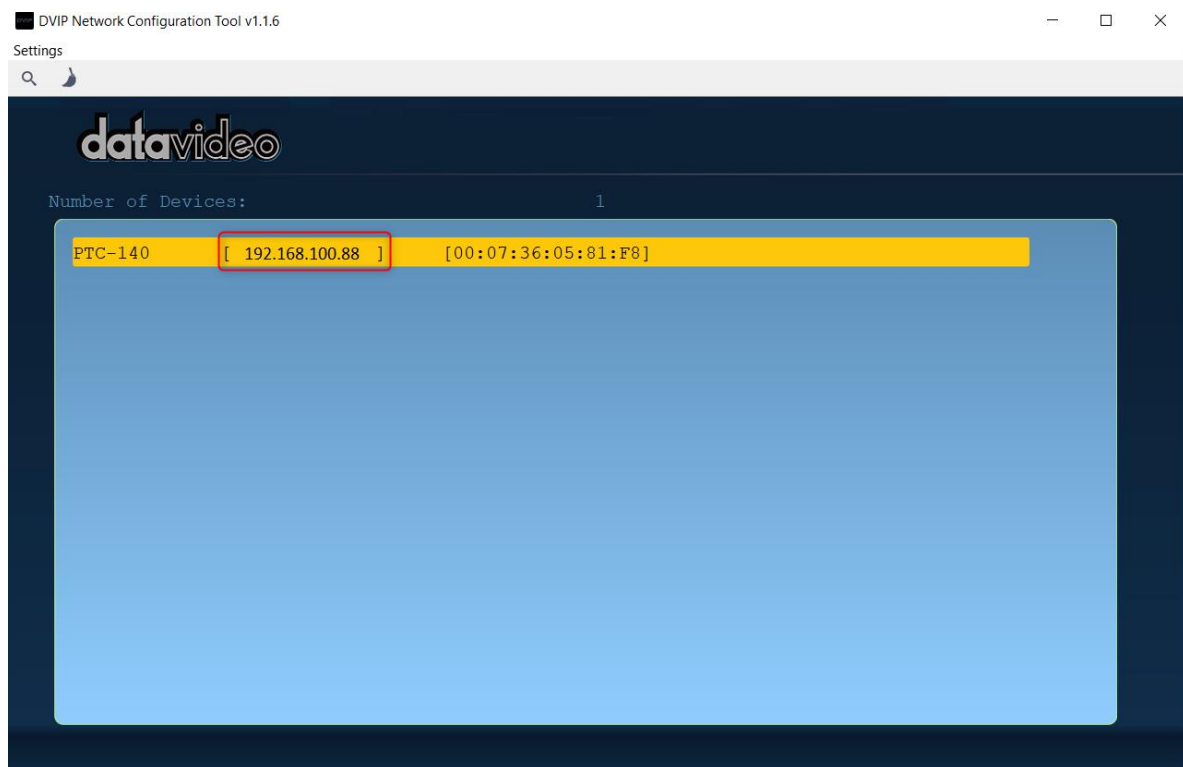


## **Before Updating the Firmware**

1. Please connect an RJ-45 Ethernet cable from the RJ-45 Ethernet interface of your PC or laptop to the LAN interface which is located on the rear panel of the PTC-140T.
2. Please connect a DC 12V power adapter to your PTC-140T camera.
3. The default static IP address of the PTC-140T camera is 192.168.100.88. If the IP address of your PTC-140T camera is not the default value, please use the Datavideo DVIP Network Configuration Tool to get the IP



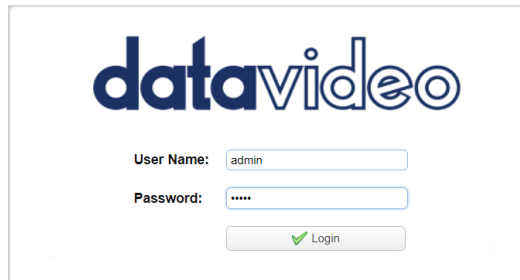
address of your PTC-140T. The DVIP Network Configuration Tool DVIP App can be downloaded from PTC-140T product page <https://www.datavideo.com/product/PTC-140T>



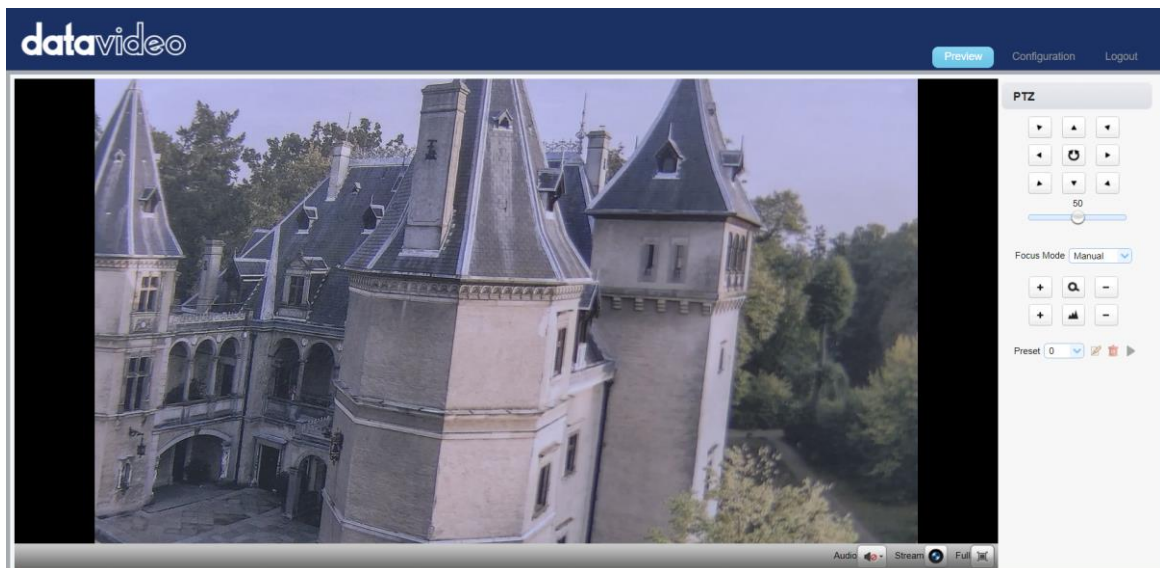
4. After obtaining the IP address of your PTC-140T, please enter the IP address in the address bar of your web browser. After that, you will see the login page of the PTC-140T web UI. Please enter the default User Name and Password for logging into the web UI.

**Default User Name: admin**

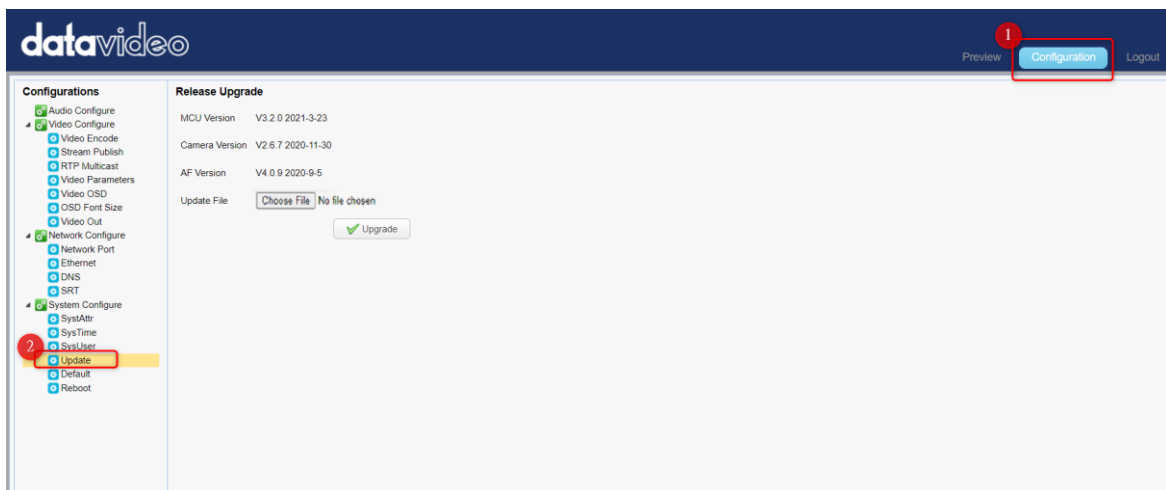
**Default Password: admin**



The login page features the DataVideo logo at the top. Below it, there are two input fields: 'User Name:' with 'admin' entered and 'Password:' with 'admin' entered (masked with dots). A 'Login' button with a green checkmark icon is positioned below the password field.

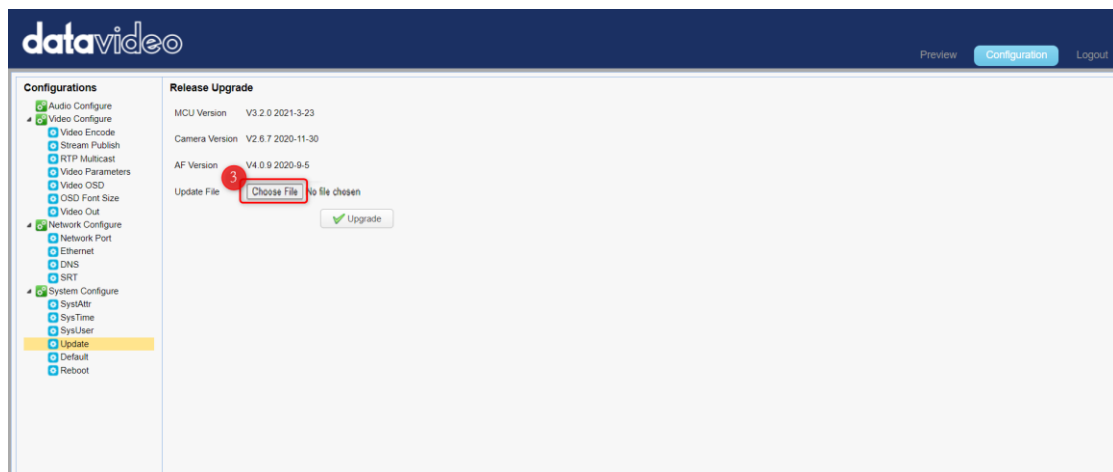


5. Please press the **Configuration-> Update** to open the firmware update page.

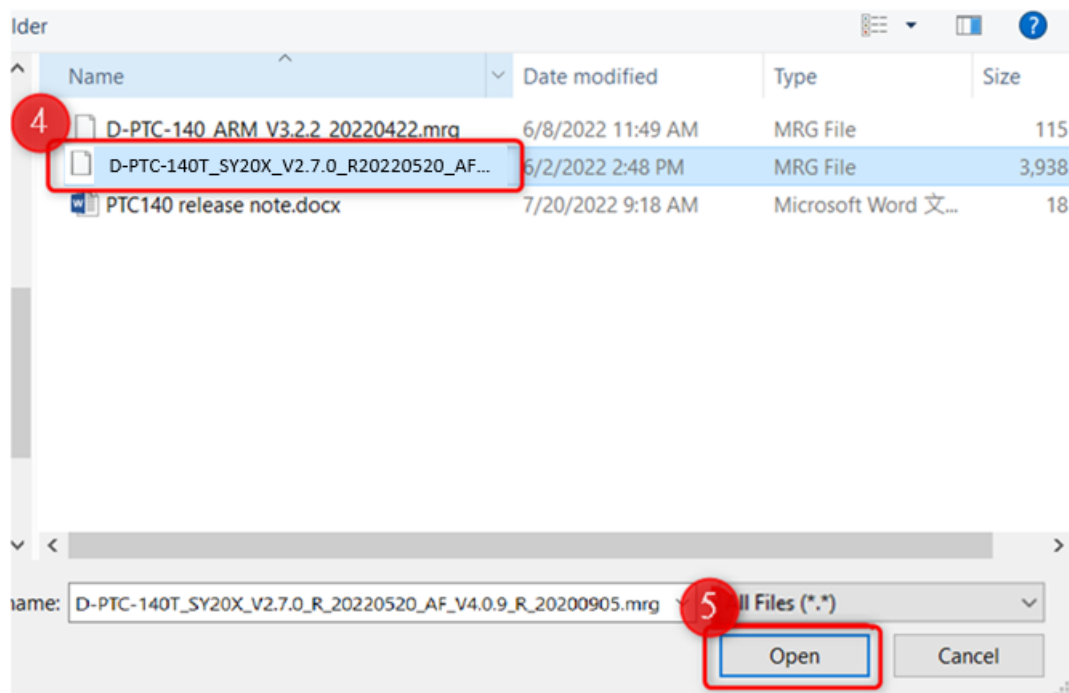


## Updating the Camera & AF Firmware

1. Please select the “Choose File” button to select the latest downloaded firmware from the hard disk of your laptop or PC. In this section, we will take “D-PTC-140T\_SY20X\_V2.7.0\_R\_20220520\_AF\_V4.0.9\_R\_20200905” as an example.

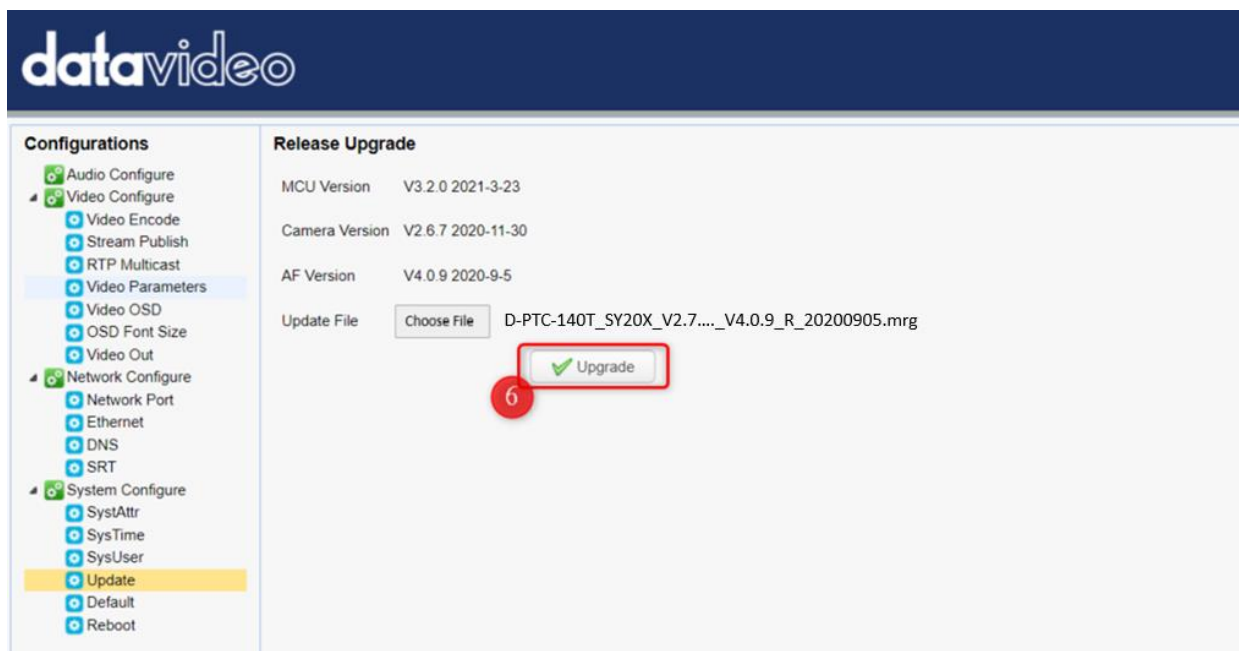


2. After the latest camera & AF firmware is selected, please press the “Open” button, and then you can see that the latest firmware “D-PTC-140T\_SY20X\_V2.7.0\_R\_20220520\_AF\_V4.0.9\_R\_20200905” is selected.

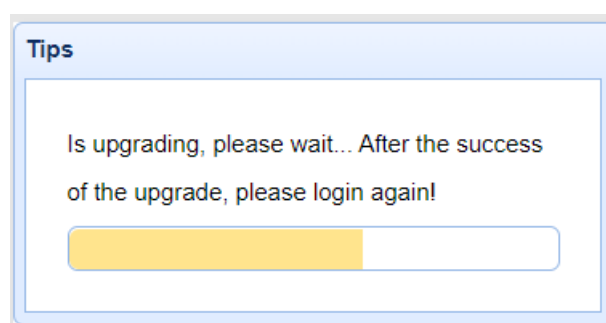




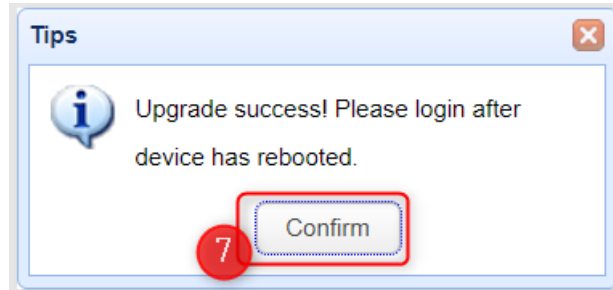
3. After the latest camera & AF firmware is selected, please press the “update” button. After that, the firmware update procedure will be started automatically.



4. After the firmware update procedure is started, you can see that there is a progress bar which is shown in the following diagram.



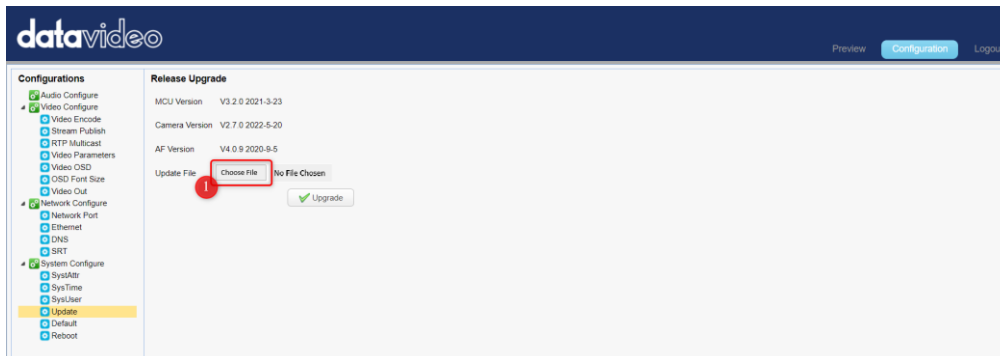
5. After the firmware update procedure is done, you can see that there is a dialogue box to show that the firmware is successfully updated and the PTC-140T will be rebooted automatically. Please press the “confirm” button.



6. After the rebooting is done, please log in to the PTC-140T web UI again. After that, please press “Configuration-> update”, and then you can see the latest updated firmware version.

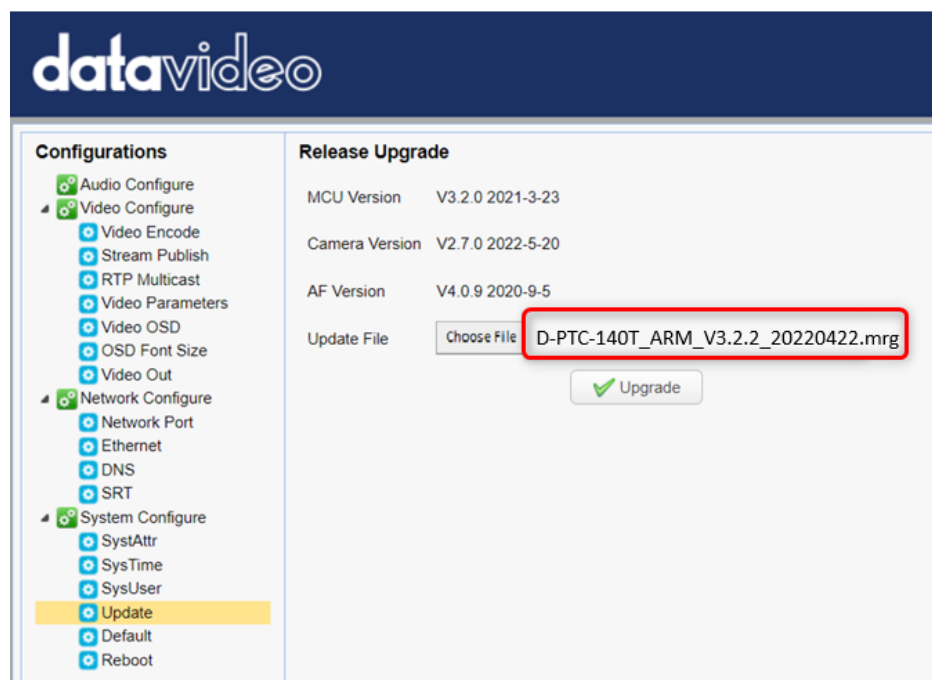
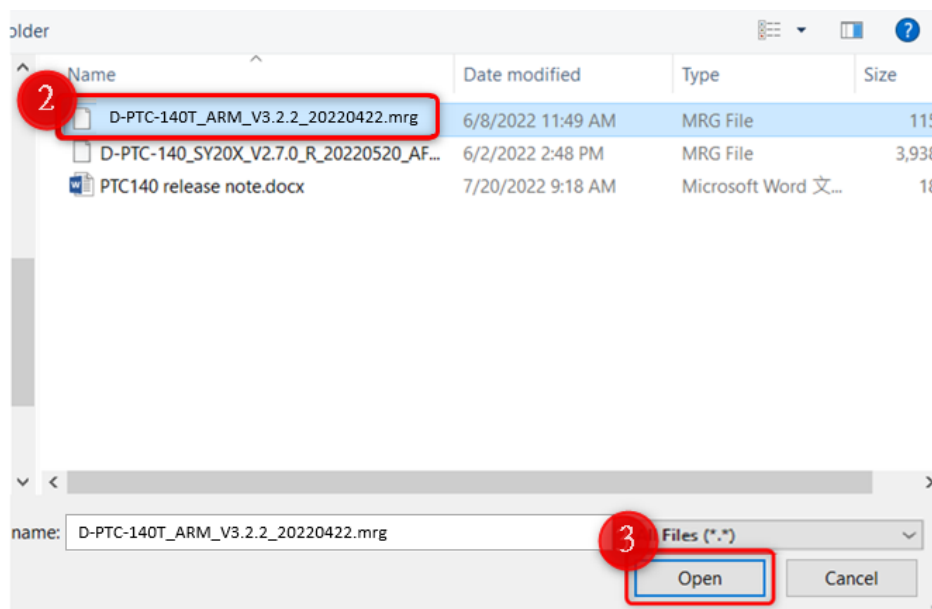
## Updating the MCU firmware

1. After the camera & AF firmware are updated, please press the “Choose File” button to select the latest MCU firmware. In this section, we will take “D-PTC-140T\_ARM\_V3.2.2\_20220422.mrg” as an example.

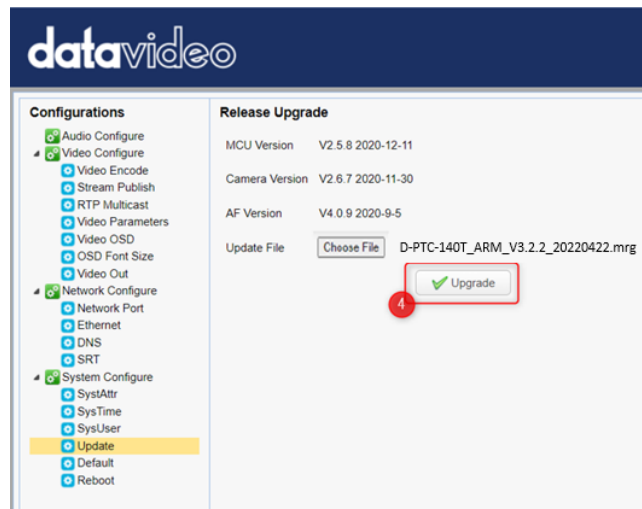




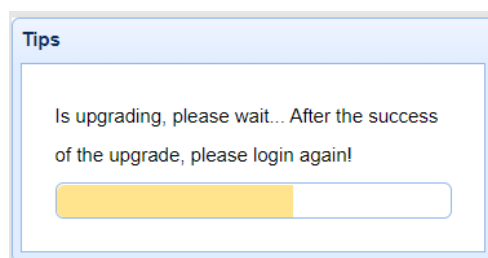
2. After the latest MCU firmware is selected, please press the “Open” button, and then you can see that the latest MCU firmware “D-PTC-140T\_ARM\_V3.2.2\_20220422.mrg” is selected.



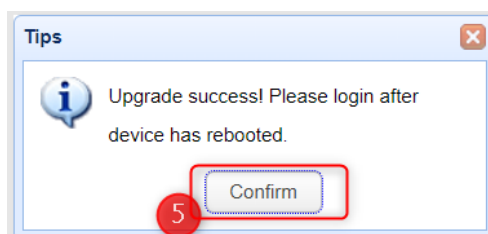
3. After the latest MCU firmware is selected, please press the “update” button. After that, the firmware update procedure will be started automatically.



4. After the firmware update procedure is started, you can see that there is a progress bar which is shown in the following diagram.



5. After the firmware update procedure is done, you can see that there is a dialogue box to show that the firmware is successfully updated and the PTC-140T will be rebooted automatically. Please press the “Confirm” button.



6. After the rebooting is done, please log in to the PTC-140T web UI again. After that, please press “Configuration-> update”, and then you can see the latest updated firmware version.