

## Firmware Update Procedures

### BC-15PN

This document provides procedures for updating the BC-15PN 4K POV NDI Camera.

### Updating the BC-15PN Camera Firmware(v1.01.71ndi)

### What items you should prepare before updating the firmware

- The latest BC-15PN firmware update zip file x1.

The latest firmware zip file can be downloaded from the BC-15PN product page

<https://www.datavideo.com/product/BC-15PN> of the Datavideo official website. Once the downloaded firmware zip file is unzipped, you can see two files including the firmware file and the firmware update tool.

➤ **Camera firmware file:** "DATA.bin".

➤ **Firmware update tool:** "BC-15P Firmware Update v1.0.2.exe". Note: The BC-15PN shares the same firmware update tool as the BC-15P.

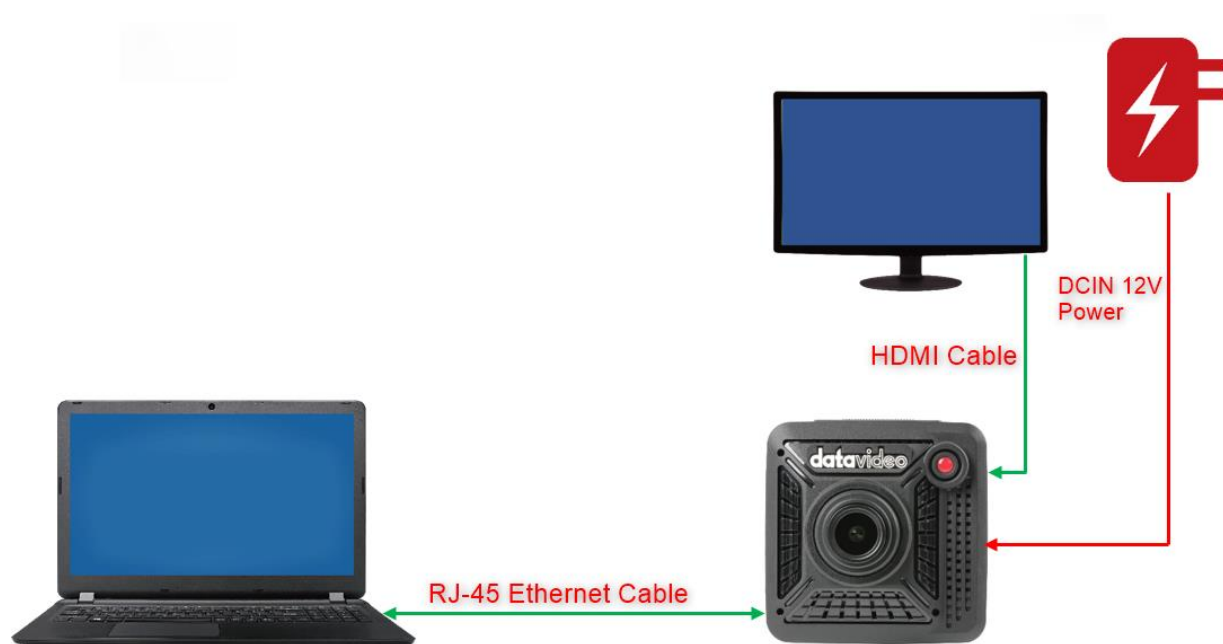
#### For BC-15PN

- BC-15PN Unit
- 12V DC adapter x 1
- RJ-45 Ethernet Cable x 1
- Laptop or PC x1 (Windows 10 is recommended)
- Latest firmware & firmware update tool

Download from: <https://www.datavideo.com/product/BC-15PN>

This document describes how to perform firmware update on a **Windows** computer.

## System Connection Diagram



## [Checking the Firmware Version](#)

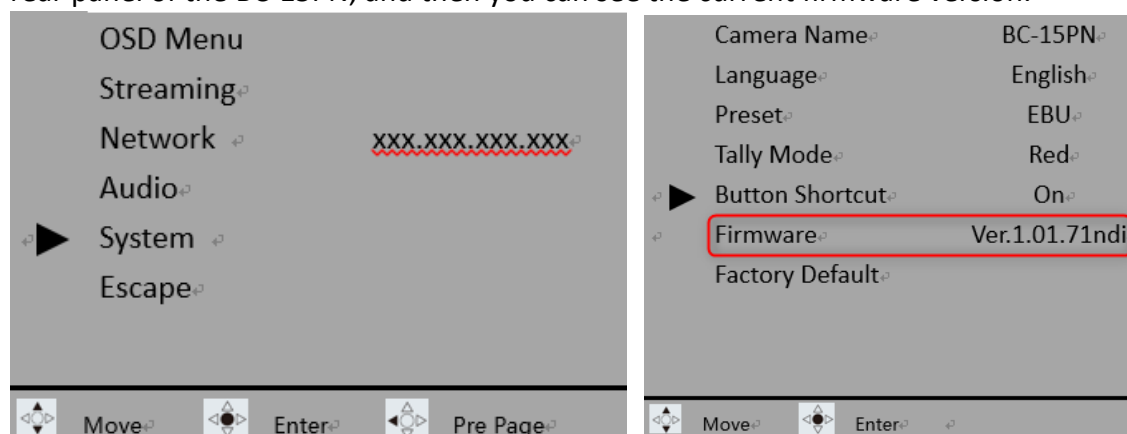
Page 3

## [Updating the Firmware-By Firmware Upgrade Tool](#)

Page 4

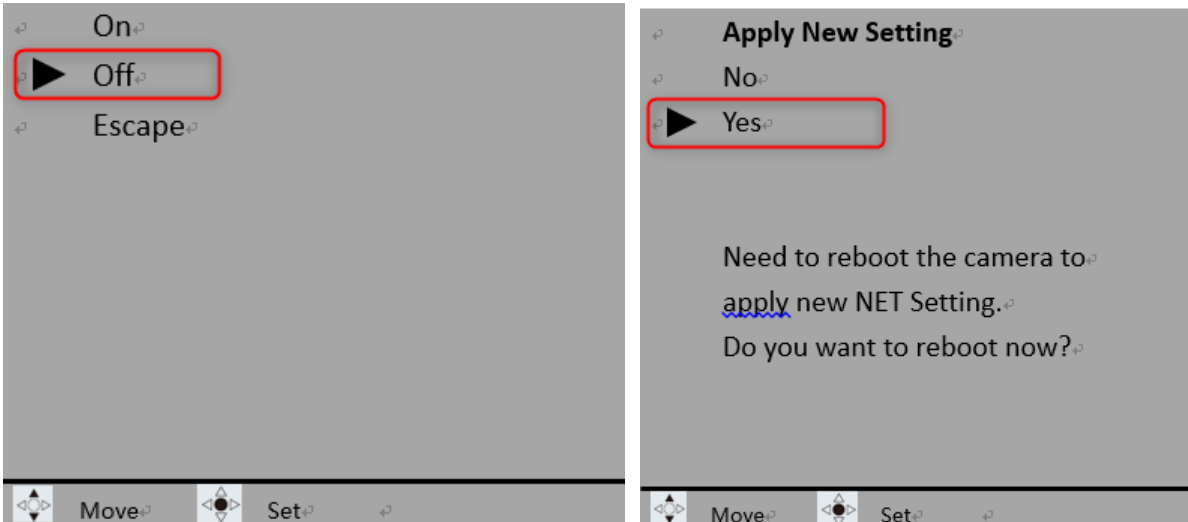
## **Checking the Firmware Version**

1. Please connect your BC-15PN according to the diagram in the [System Connection Diagram](#).
2. Please press the "MENU" button on the rear panel of the BC-15PN to open the OSD menu.
3. Once the OSD menu is opened, please select "System>Firmware" by using the direction buttons on the rear panel of the BC-15PN, and then you can see the current firmware version.



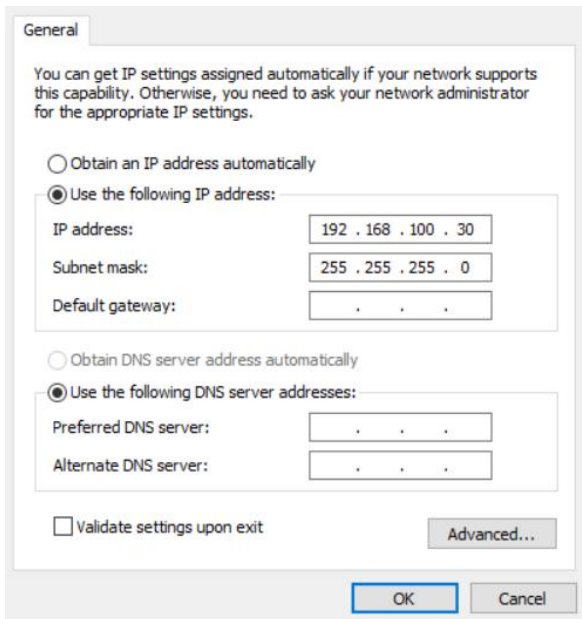
## Updating the Firmware-By Firmware Update Tool

1. At first, please open the BC-15PN OSD menu, and then go to “Network>DHCP>DHCP On/Off” to turn the DHCP option to be “Off”. After the “DHCP” is turned off, please reboot the BC-15PN according to the instructions from the OSD. **Note: Please use the direction buttons on the rear panel of the BC-15PN to move or to select the option. Moreover, please use the “MENU” button on the rear panel of the BC-15PN to confirm your selection or to enter next layer of the OSD menu.**



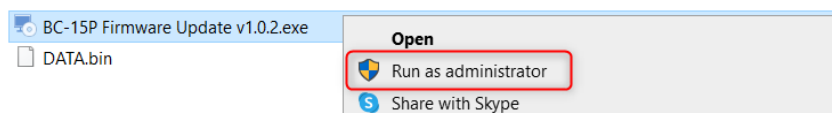
2. After that, please use a RJ-45 Ethernet cable to connect the BC-15PN and your laptop or PC.

3. The static IP address of the BC-15PN is “**192.168.100.100**”. So, please set your laptop or PC in Static IP mode and the static IP address must be set within the same IP range of the BC-15PN. In this example, we will use “192.168.100.30” as an example.

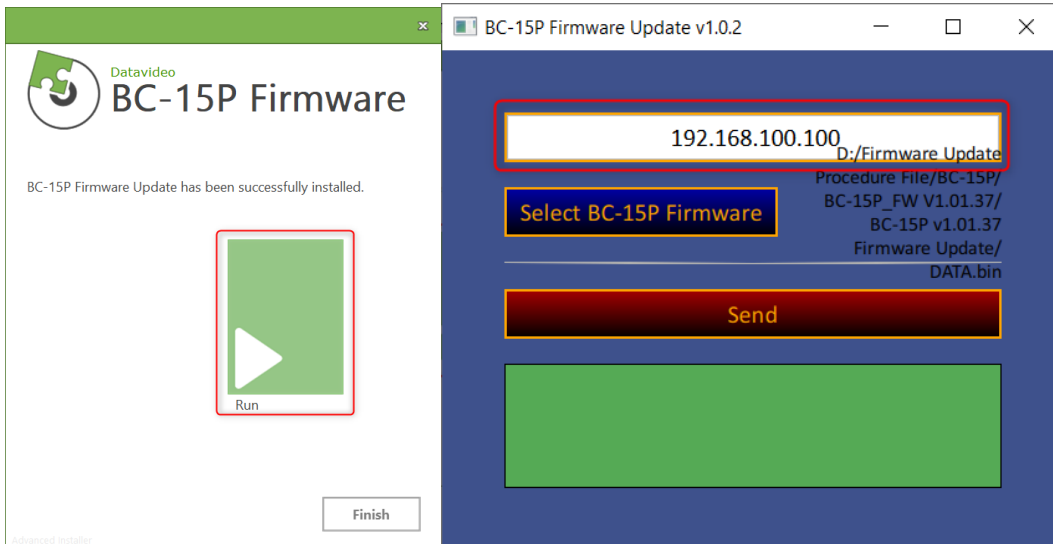


4. Please make sure that the downloaded firmware zip file is unzipped and then you can see the BC-15PN firmware update tool “BC-15P Firmware Update v1.0.2.exe” [BC-15P Firmware Update v1.0.2.exe](#) and the firmware file “DATA.bin” [DATA.bin](#).

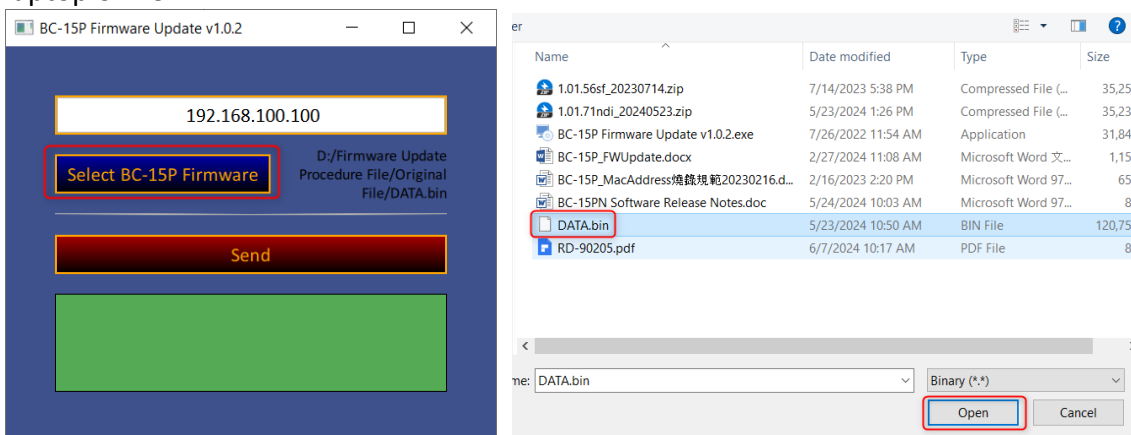
5. Please right-click the “BC-15P Firmware Update v1.0.2.exe” and select “Run as administrator” from the drop-down menu. After that, please click the “Install” button to install the firmware update tool.



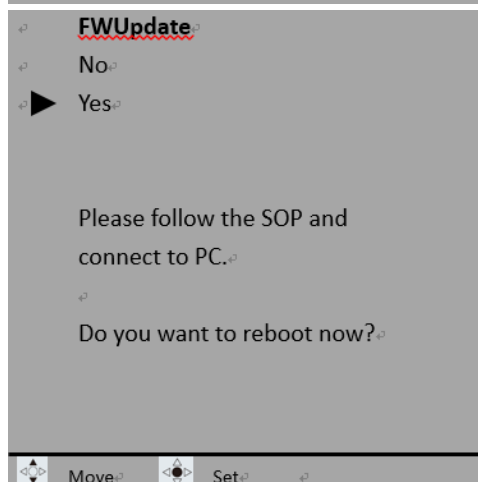
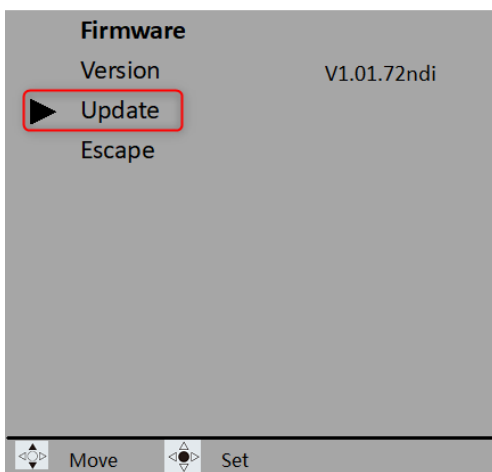
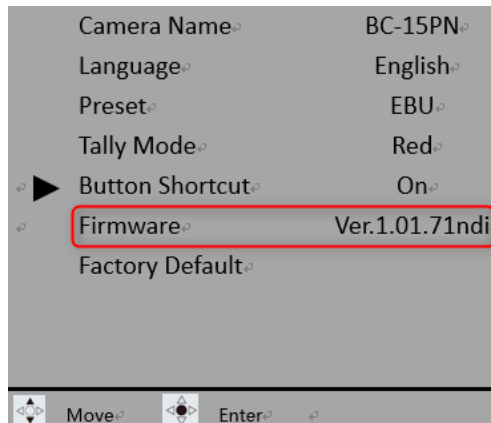
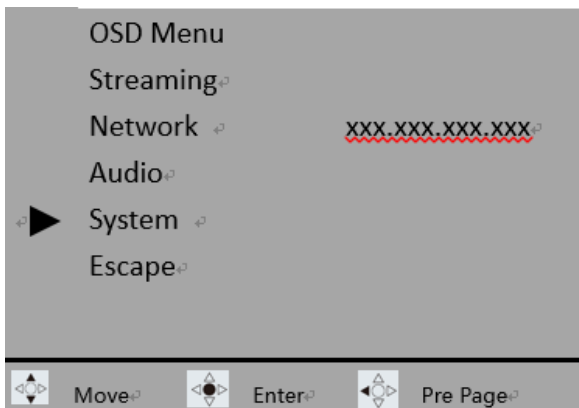
6. After the installation is finished, please click “Run” to open the firmware update tool. After that, please enter the static IP address of the BC-15PN. The default static IP address of the BC-15PN is 192.168.100.100.



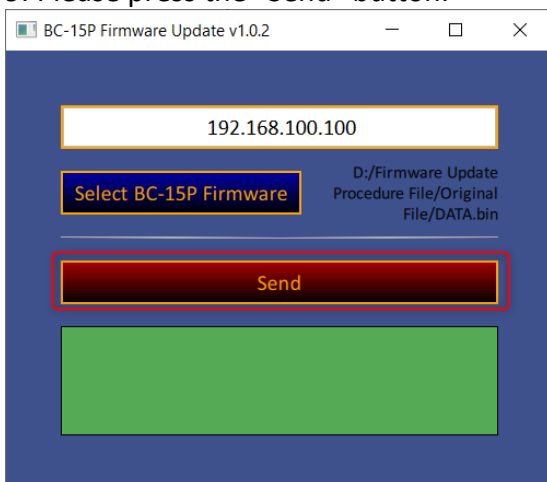
7. Please press the “Select BC-15P Firmware” button to select the downloaded BC-15PN firmware from your laptop or PC.



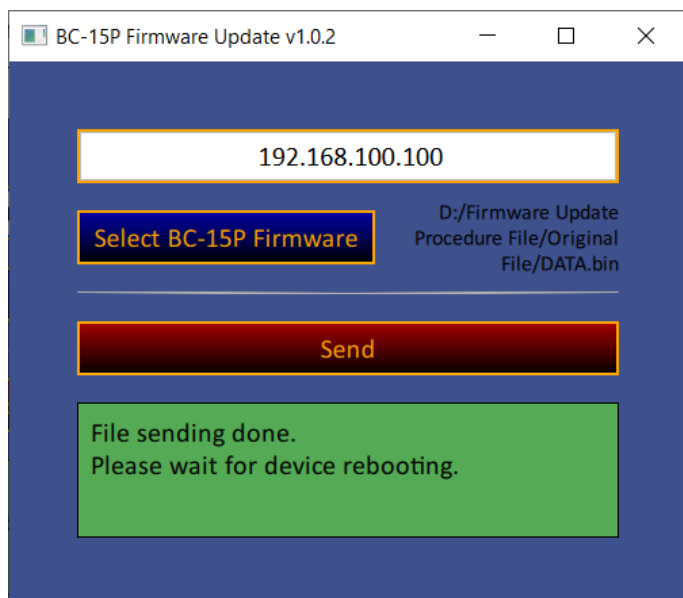
8. Please open the BC-15PN OSD. After that, please go to “System>Firmware>Update>FW Update No/Yes”. Please select “Yes”.



9. Please press the "Send" button.



10. The message of “File sending done.” will show, and please wait for the reboot of the BC-15PN.



11. After the message “**Please Power Cycle Now**” is shown on the external monitor, please unplug and then plug the power of your BC-15PN. After that, the whole firmware update procedure is done successfully.